



PUBLIC INFORMATION MEETING

Ravensdale Road over the Saw Mill River Parkway Bridge Project PIN 8754.76

October 1, 2018



**Department of
Transportation**

LOCHNER

Agenda

- Introductions
- Project Background
- Project Objectives
- Project Limits
- Off-site Detour/Staged Construction
- Pedestrian Access
- Barrier and Fence
- Costs
- Schedule

Introductions/Project Team

- NYSDOT
- Lochner Engineering, PC
 - Hudson Valley Engineering Associates
 - Foit-Albert Associates

Project Background

- Bridge constructed in 1946
- Project initiated in 2007
- Bridge in need of repair/replacement



Project Background



First span facing north

Project Background



Second span over the South County Trailway facing north

LOCHNER

Project Background - Existing Bridge Condition

Photo Number: 2 Photo Filename: 16_02_Begin Abutment Under Bay 2.JPG



Photo Number: 6 Photo Filename: 16_06_Begin Abutment Bay 7.JPG



Photo Number: 7 Photo Filename: 16_07_Begin Abutment from Right.JPG



Project Background – Existing Bridge Condition

Photo Number: 28 Photo Filename: 16_27_Span 2 Wearing Surface from Begin



Bridge Deck

Photo Number: 30 Photo Filename: 16_29_Span 1 G7 at End from Left.JPG

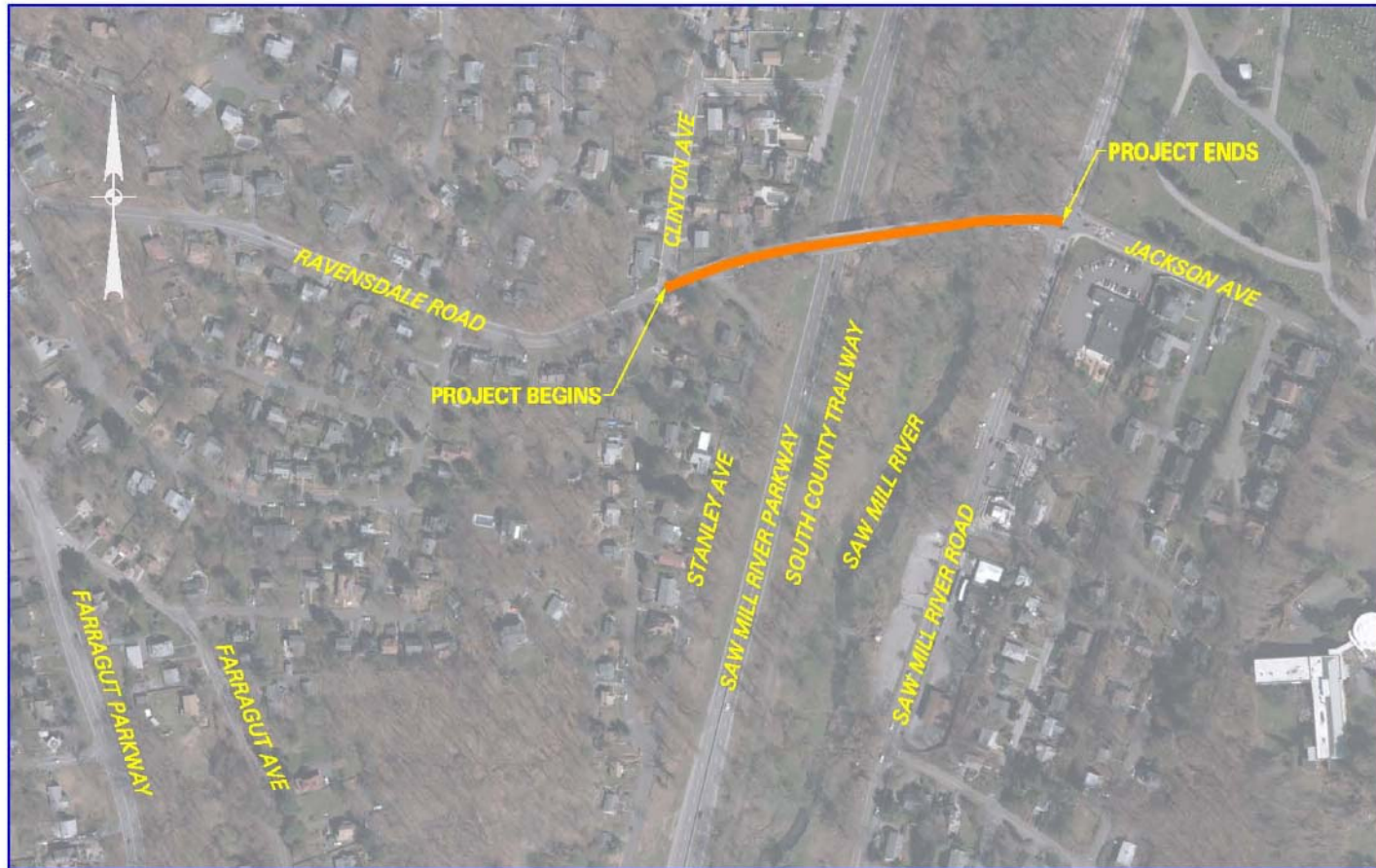


Bridge Girder

Project Objectives

- Provide a safe crossing with no structural deficiencies with a design life of at least 75 years
- Maintain traffic during construction with minimal delays
- Restore pavement to good condition and ride-ability

Project Location



RAVENSDALE BRIDGE PROJECT

Alternatives

- Null Alternative – No Build
- Bridge Rehabilitation Alternative
- Bridge Replacement Alternative

Null Alternative

- This alternative will continue to maintain the existing structure.
- No major repairs or improvements are proposed for this alternative.
- Existing inadequate structure and existing conditions would remain

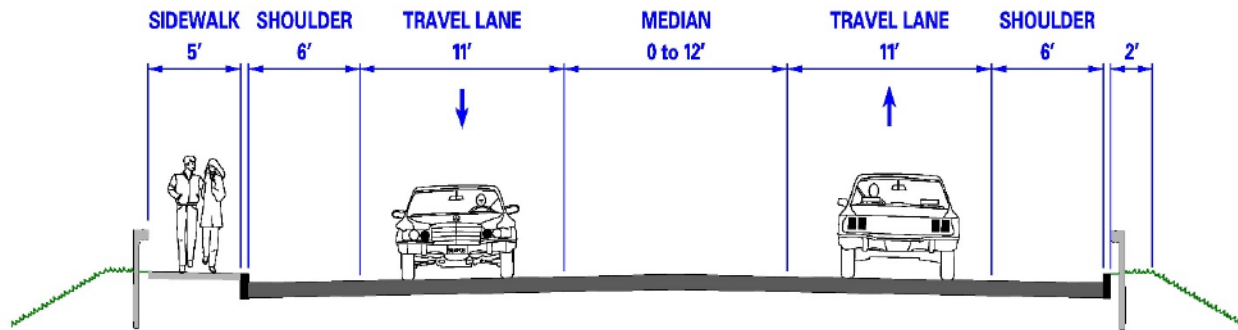
Bridge Rehabilitation Alternative

- This alternative will replace the deck of the bridge, repair the existing concrete abutments and pier, and replace the existing bridge bearings.
- This alternative will not address all of the project objectives.
- This alternative will take longer to construct resulting in a longer impact to the travelling public.

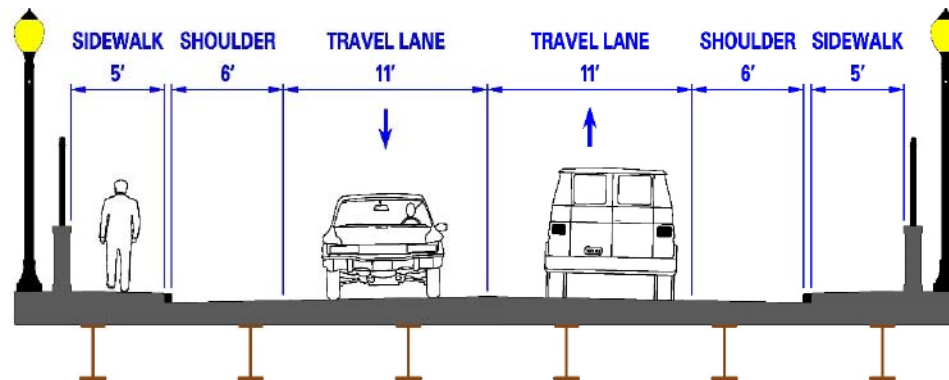
Bridge Replacement Alternative

- This alternative will remove and replace the entire bridge structure.
- Ravensdale road will be closed during construction in order to minimize the duration of the inconvenience to the travelling public and the residents of the community.
 - Traffic will be detoured around the project.
 - A temporary pedestrian bridge will be provided during construction.

Typical Sections

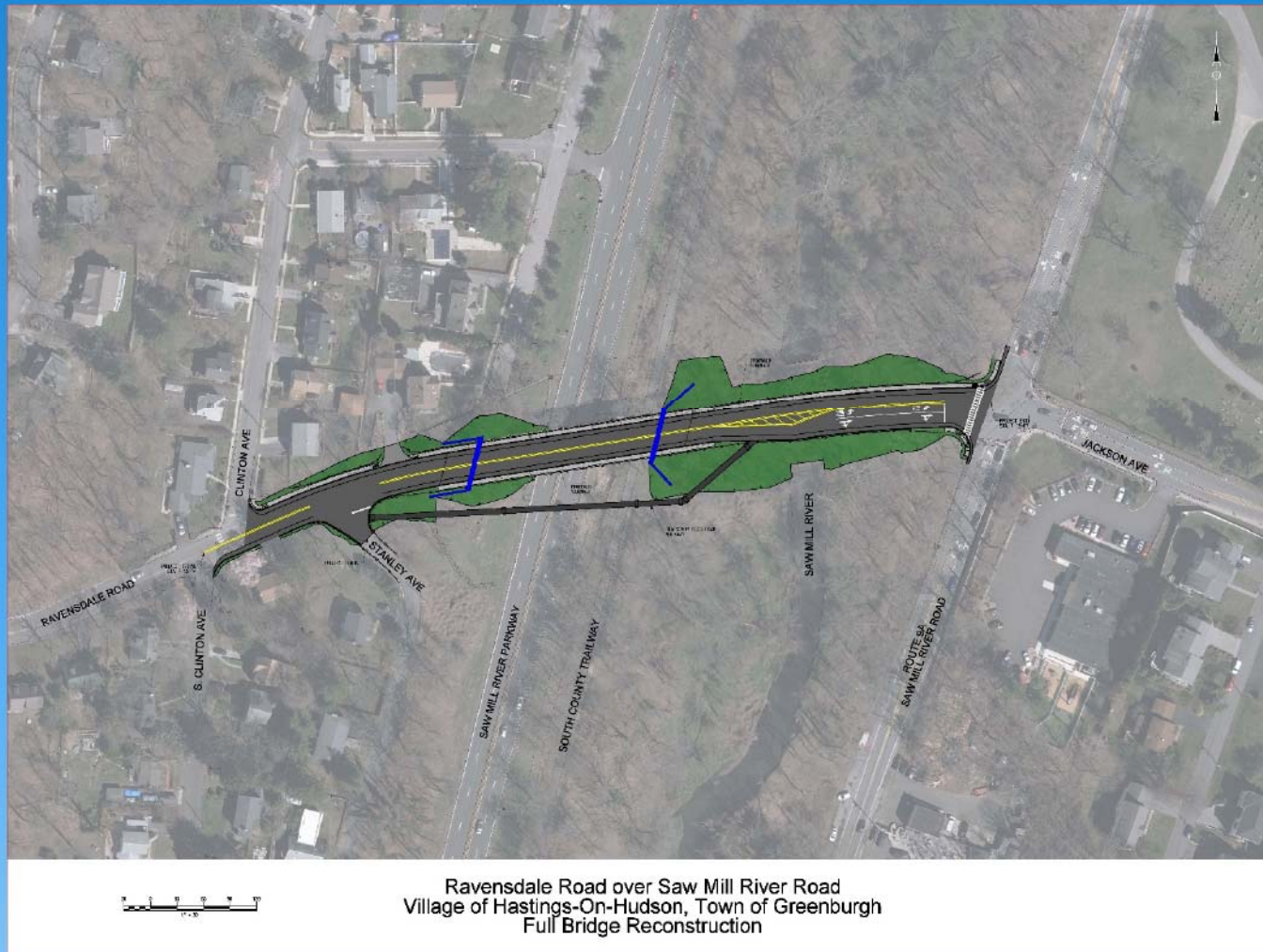


TYPICAL ROAD SECTION

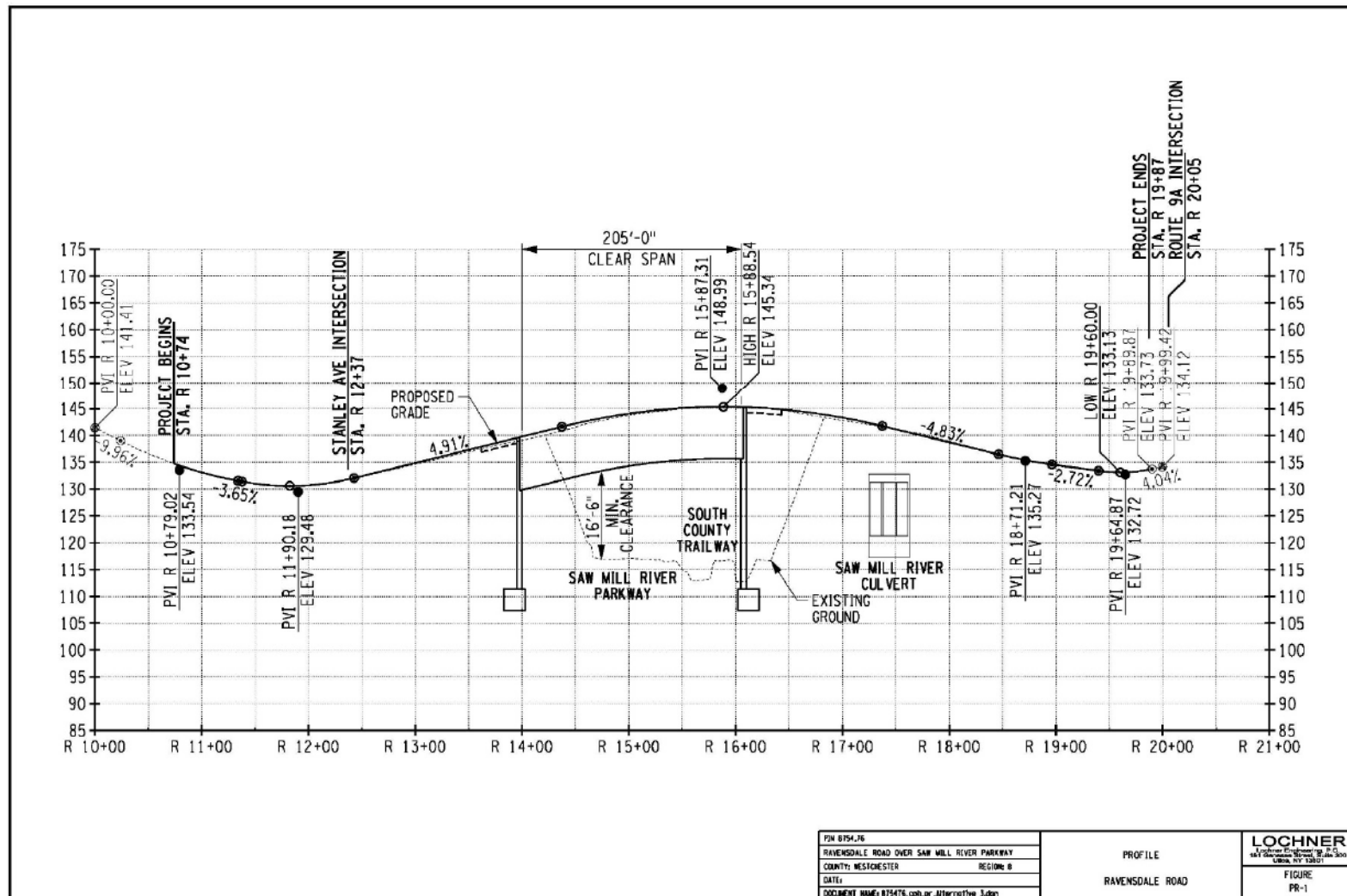


TYPICAL BRIDGE SECTION

Ravensdale Planimetric



Ravensdale Profile

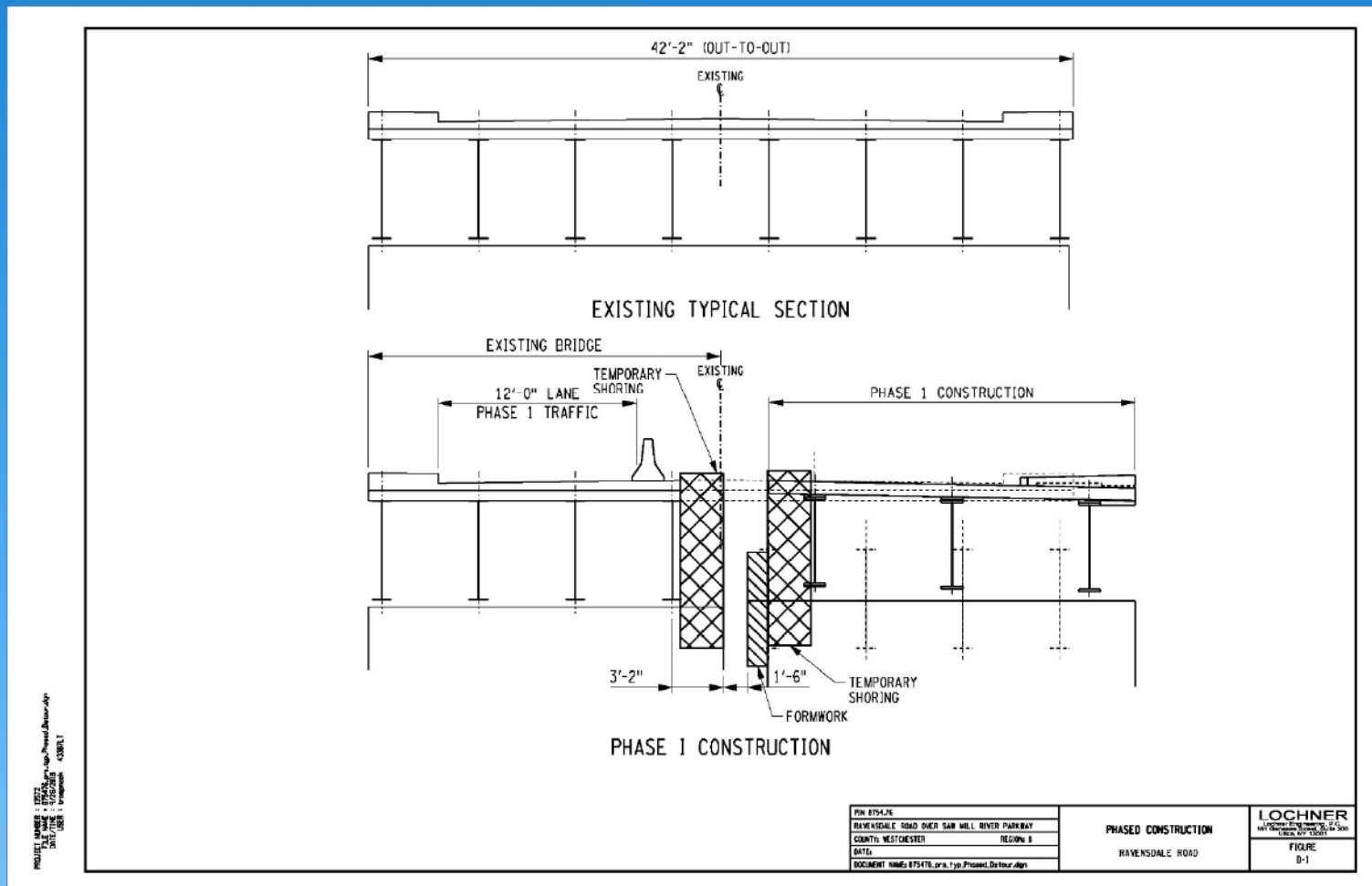


Off-Site Detour (Ravensdale Closure) vs. Staged Construction

- Evaluated both scenarios
- With Ravensdale closure, anticipate 4-6 month construction duration
- With staged construction, anticipate 12-18 month construction duration with a winter shutdown
 - Long delays with alternating one way traffic operations
- Pedestrian access will be provided for either scenario
 - A temporary bridge for pedestrians would be used for the Ravensdale closure option.



Staged Construction



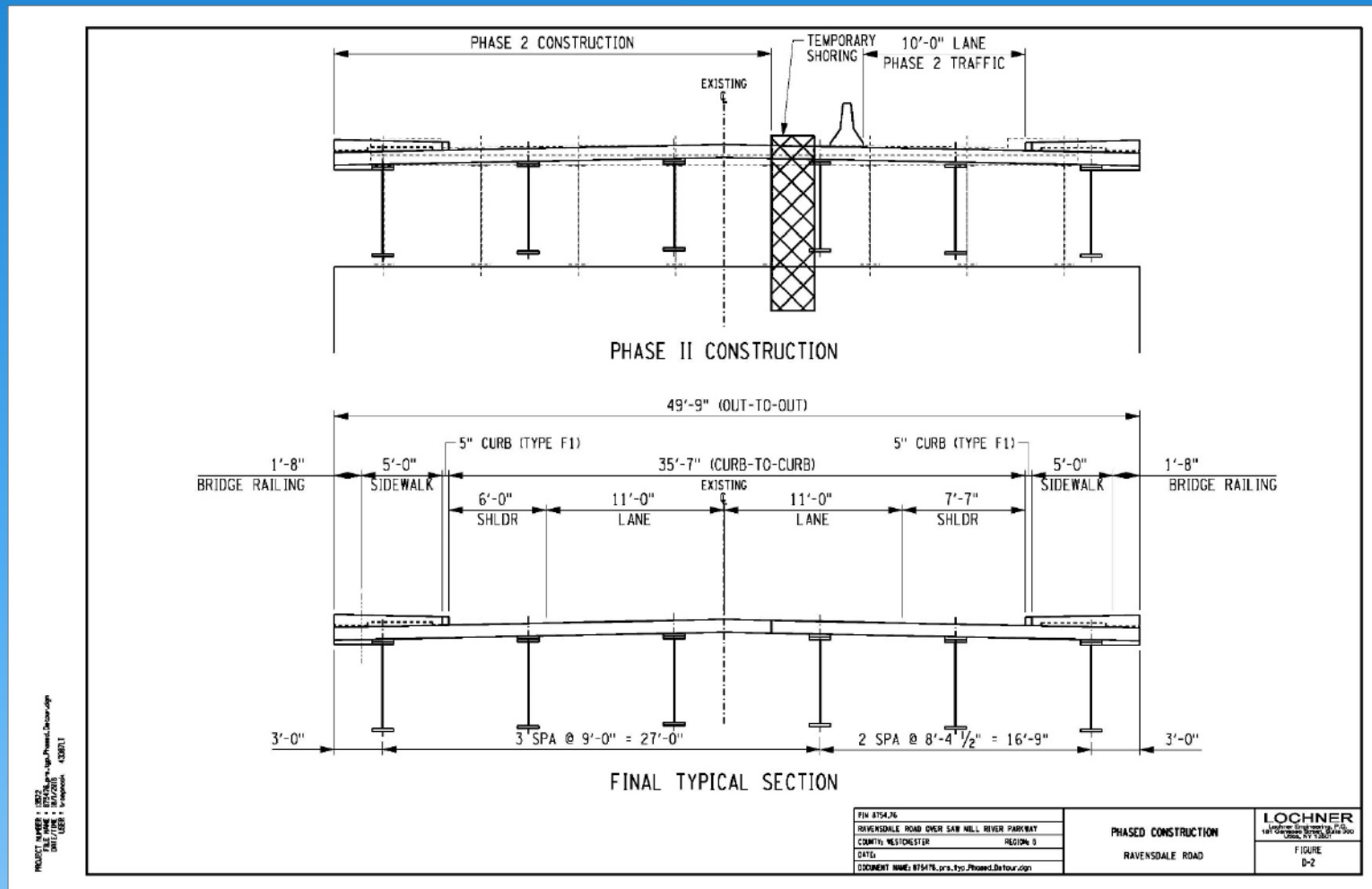
Staged Construction Duration: 12-18 Months



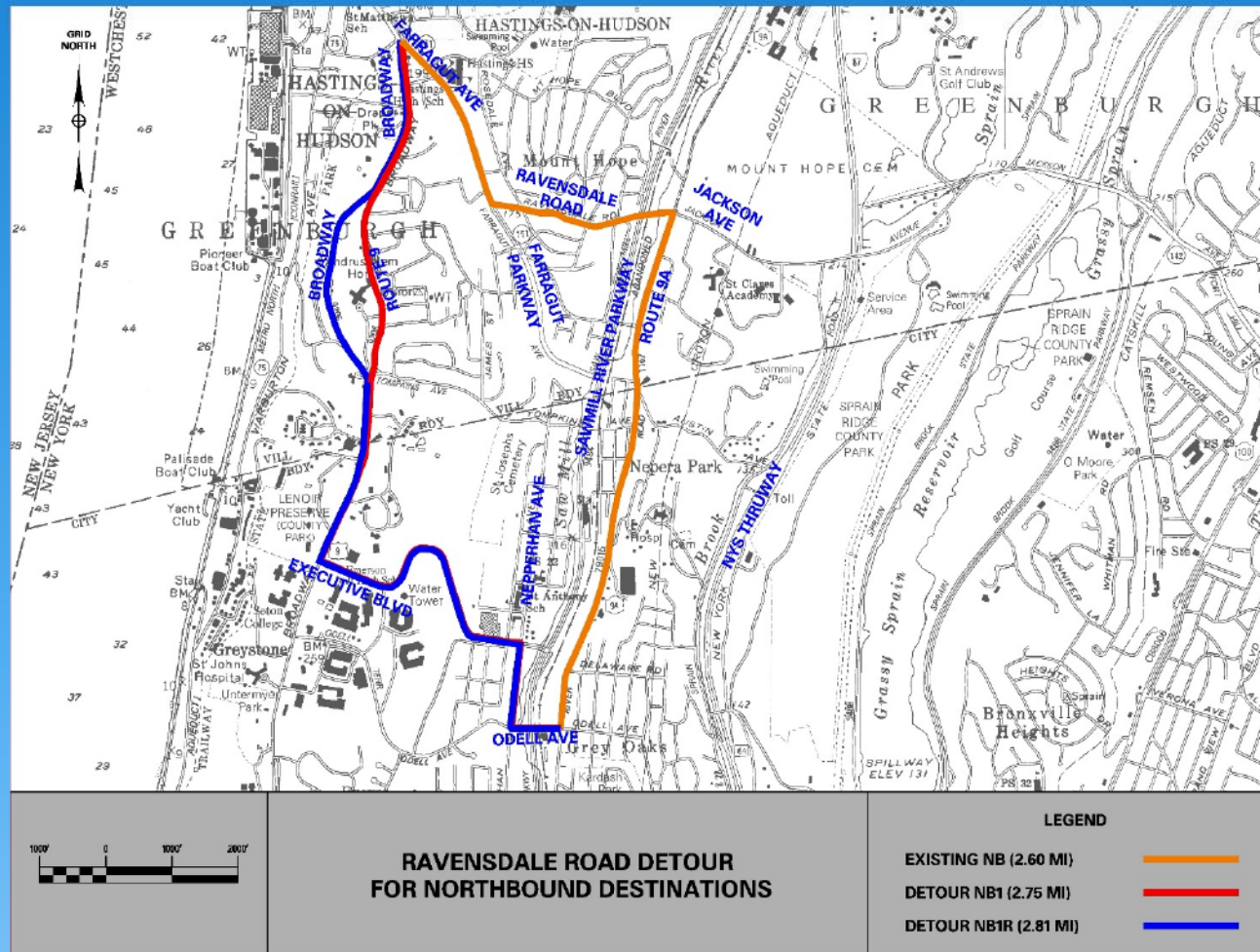
Department of
Transportation

LOCHNER

Staged Construction



Potential Detour Routes



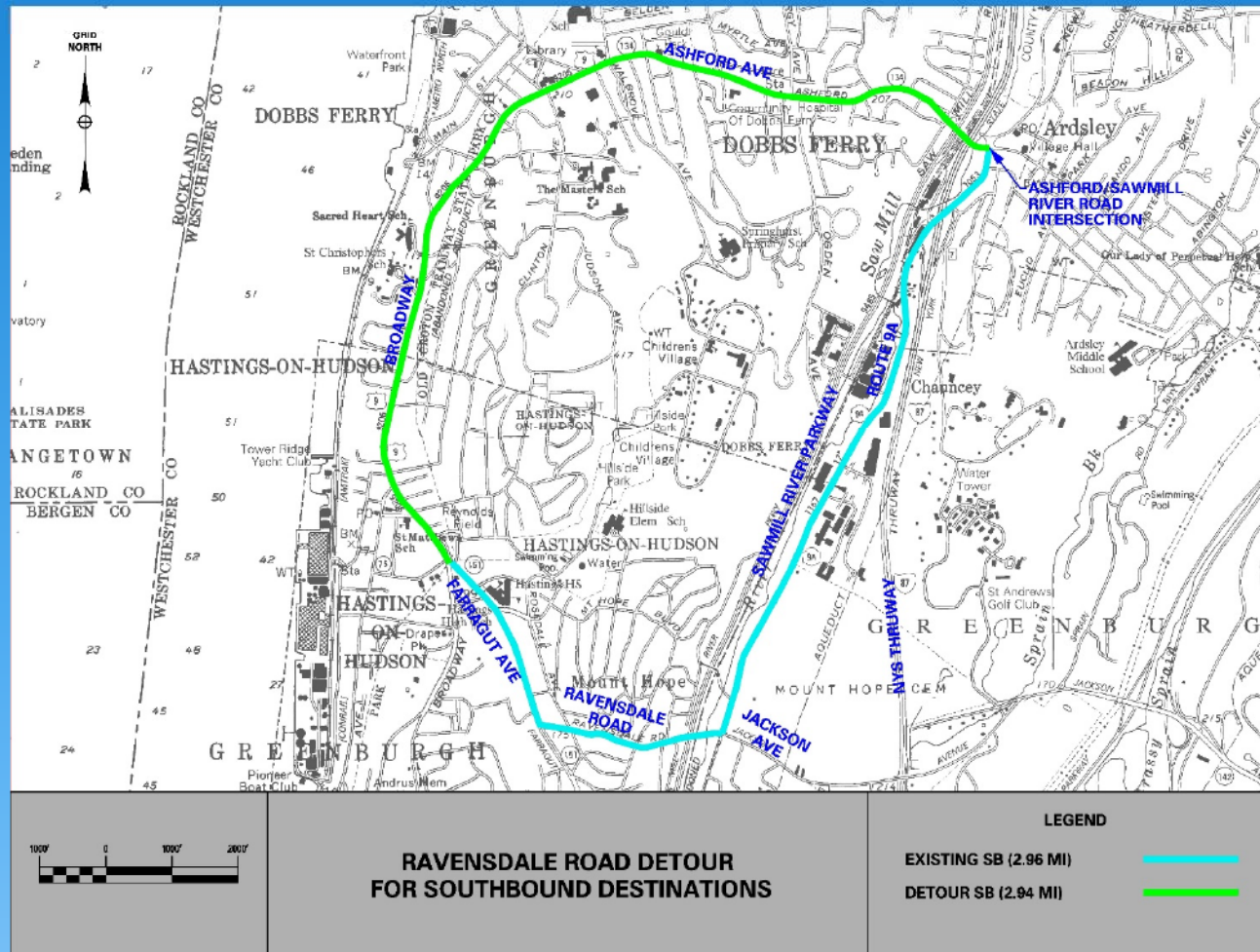
Full Closure Duration: 4-6 Months



Department of
Transportation

LOCHNER

Potential Detour Routes



Full Closure Duration: 4-6 Months



Department of
Transportation

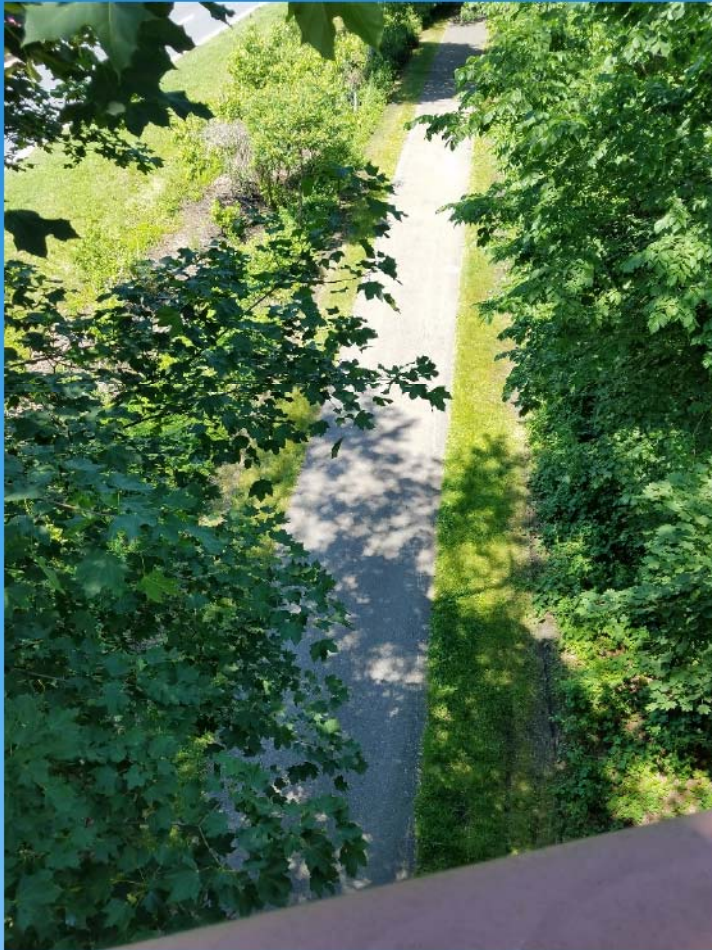
LOCHNER

Staged Construction Option was Dropped

- Construction duration 6 to 12 months longer
- Longer disturbance within the community
- More complicated construction techniques required
- Increased safety concerns



South County Trailway



- Trail will remain open throughout construction
- Limited short-term closures during critical operations
 - Demolition
 - Steel Erection

Texas Aesthetic Barrier with Fence



Department of
Transportation

LOCHNER

Texas Aesthetic Barrier with Fence



Preliminary Alternative Estimated Cost

Alternative	Project Cost
Null Alternative	\$0
Rehabilitation Alternative	\$4,669,000
Reconstruction Alternative	\$14,244,000

Schedule

Phase	Estimated for
Design Approval	November 2018
ROW Acquisition Complete	April 2019
Final Plans, Specifications & Estimate	May 2019
Bid Opening	July 2019
Project Awarded	September 2019
Construction Begins	December 2019
Construction Ends	December 2020

PUBLIC INFORMATION MEETING RAVENSDALE ROAD BRIDGE PROJECT

Questions?



Department of
Transportation

LOCHNER

Information or Written Comments Contact:

Paul Tirums, NYSDOT Regional Structures
Engineer

4 Burnett Boulevard
Poughkeepsie, NY 12603
(845) 431-7915



Department of
Transportation

LOCHNER