



## VILLAGE OF HASTINGS-ON-HUDSON

Municipal Building  
7 Maple Avenue  
Hastings-on-Hudson, New York 10706  
Mary Beth Murphy, Village Manager  
[villagemanager@Hastingsgov.org](mailto:villagemanager@Hastingsgov.org)  
914 478 3420

2 June, 2021

### TREE INVENTORY & COMMUNITY FOREST MANAGEMENT PLAN IN THE VILLAGE OF HASTINGS-ON-HUDSON

#### Addendum #1

#### Question:

Good morning,

We are wondering in putting together our proposal if you have an idea how many trees there are to be inventoried in Hastings or, as an alternative, how many miles of trails there are to inventory. Is there a map that delineates the trails? We would use these materials to determine our pricing for the project. Thank you.

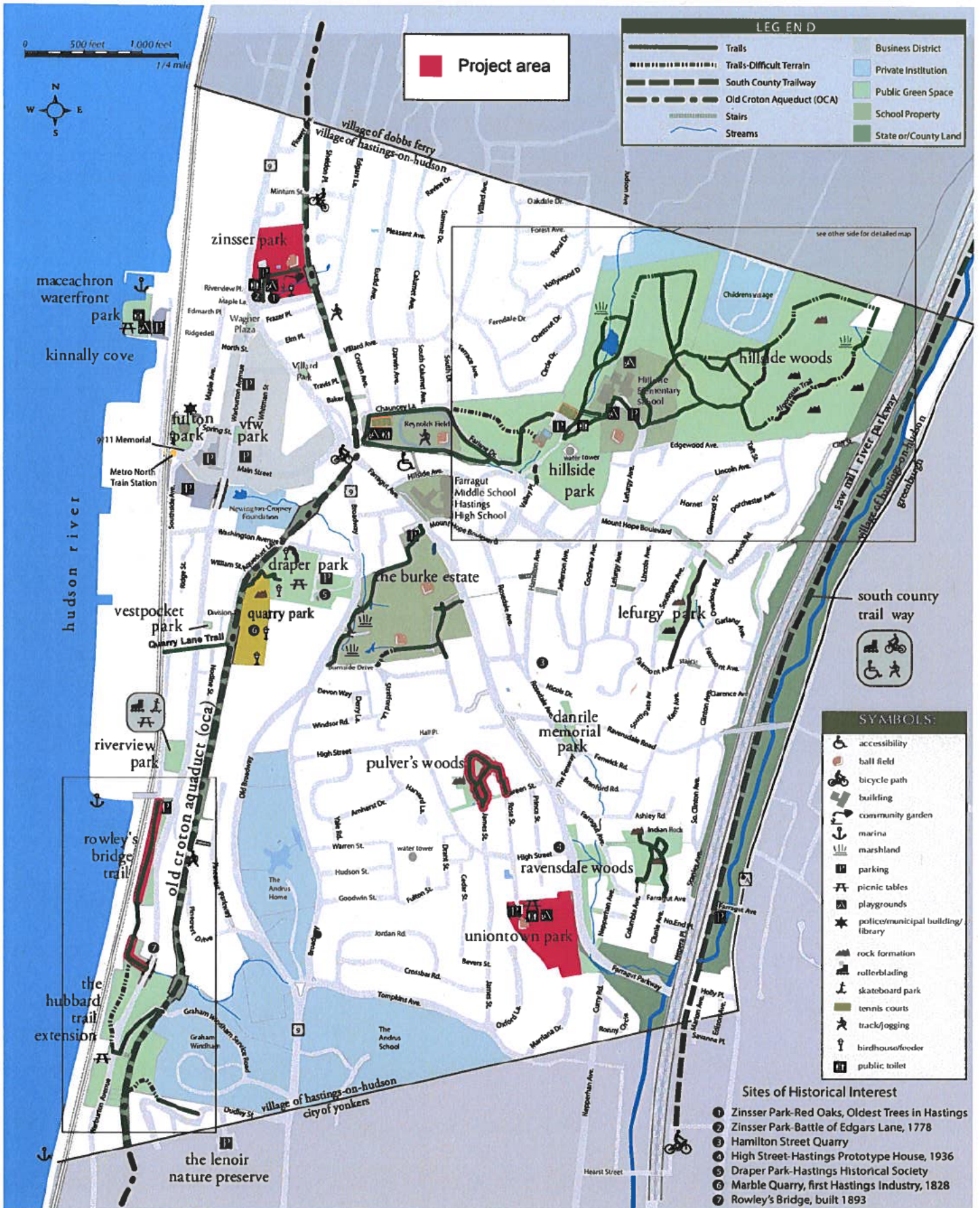
#### Response:

At this time, the Village does not have a number of trees for these areas. Attached are a series of supporting documents for the areas to be inventoried.

Approximate trail lengths are as follows:

- Pulver's Woods: <0.50 miles
- Uniontown Park: <0.50 miles
- Rowley's Bridge Trail: <0.50 miles

# Village of Hastings-on-Hudson Parks Forest Management Plan





as a baseline to develop specific plans for managing the forestry needs of the parks in a manner intended to protect visitors from needless risks.



Figure 1 - Zinsser Park



Figure 2 - Uniontown Park





Figure 3 – Pulvers Woods

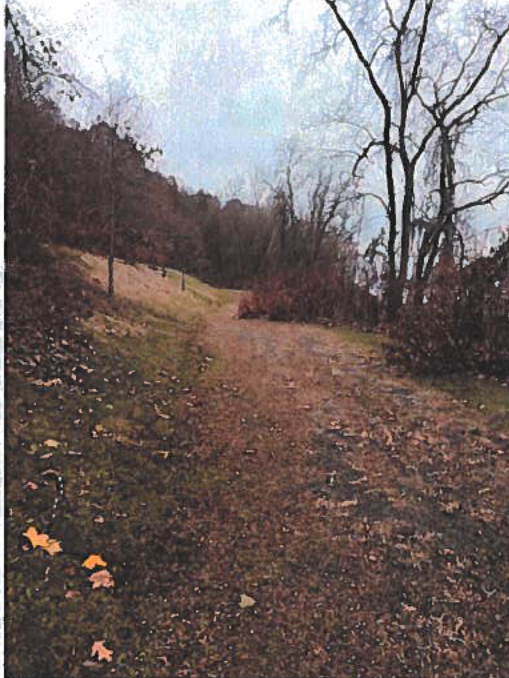
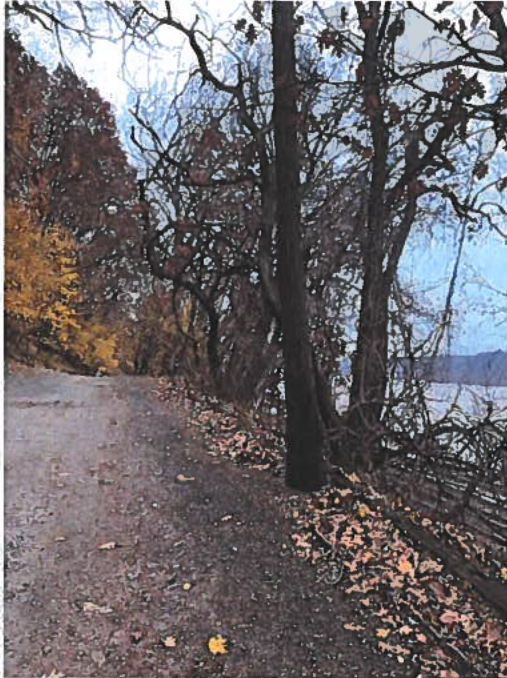


Figure 4 – Rowley's Bridge Trail



## Rowley's Bridge Trail

Note the Hudson River which can be seen between the trees in the first and third photographs.





**Uniontown Park**



**North edge of ballfield**



**Playground and parking lot (ballfield in the background)**



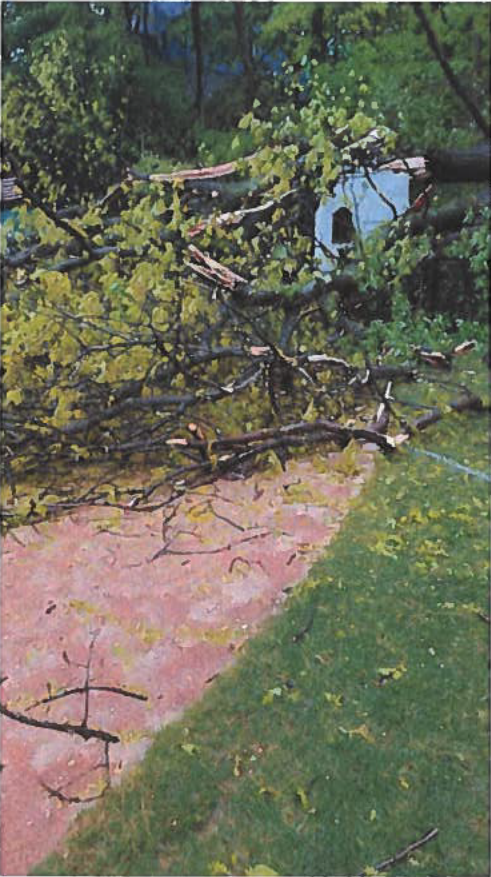
**South edge of ballfield and comfort station/refreshment stand**



**Basketball court (batting cage in background)**



**Uniontown Park (cont.)**



**Tree atop dugout (phone taken in May)**



**Remains of tree toppled tree reveals rot (November)**



**Northern ballfield fence**



**Zinsser Park**



**Photo taken from ballfield looking out at surrounding trees**



**Looking down onto community gardens**



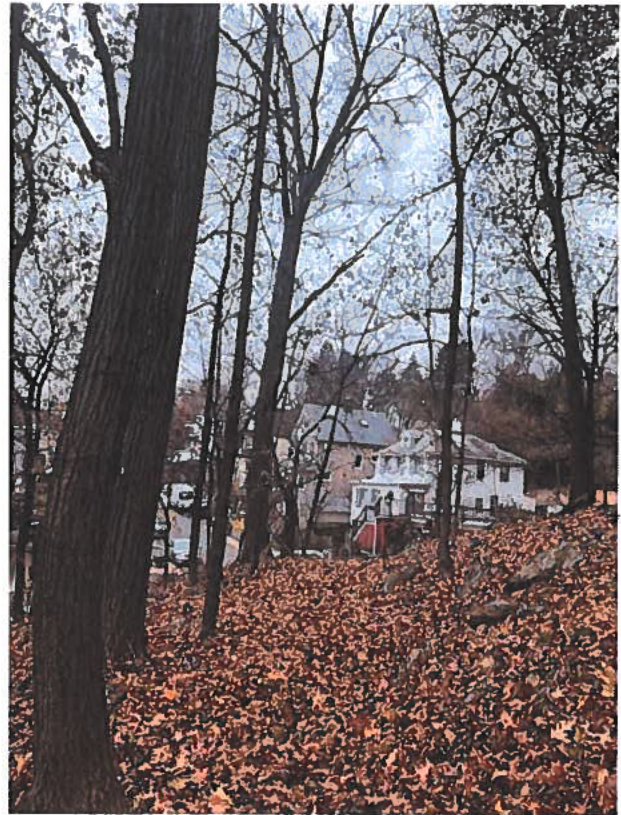
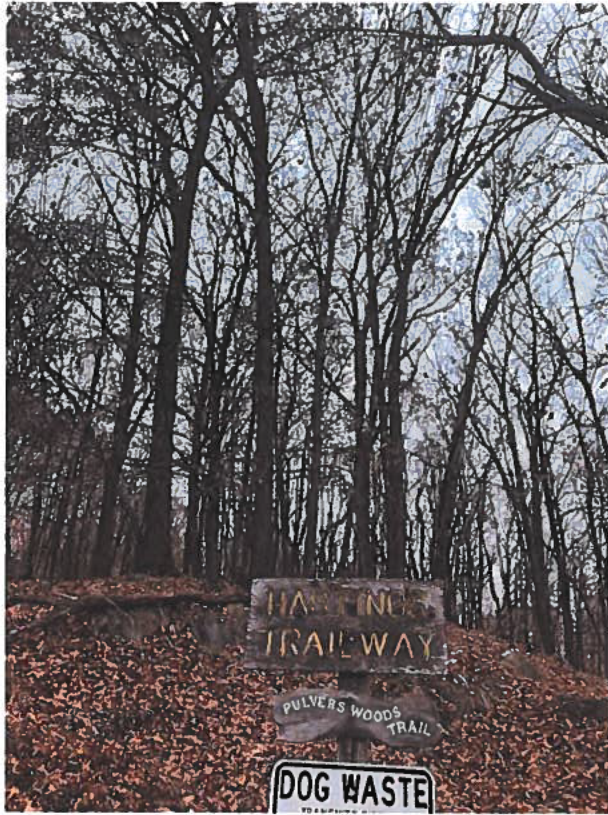
**Comfort station**



**Walking area between comfort station and community garden**

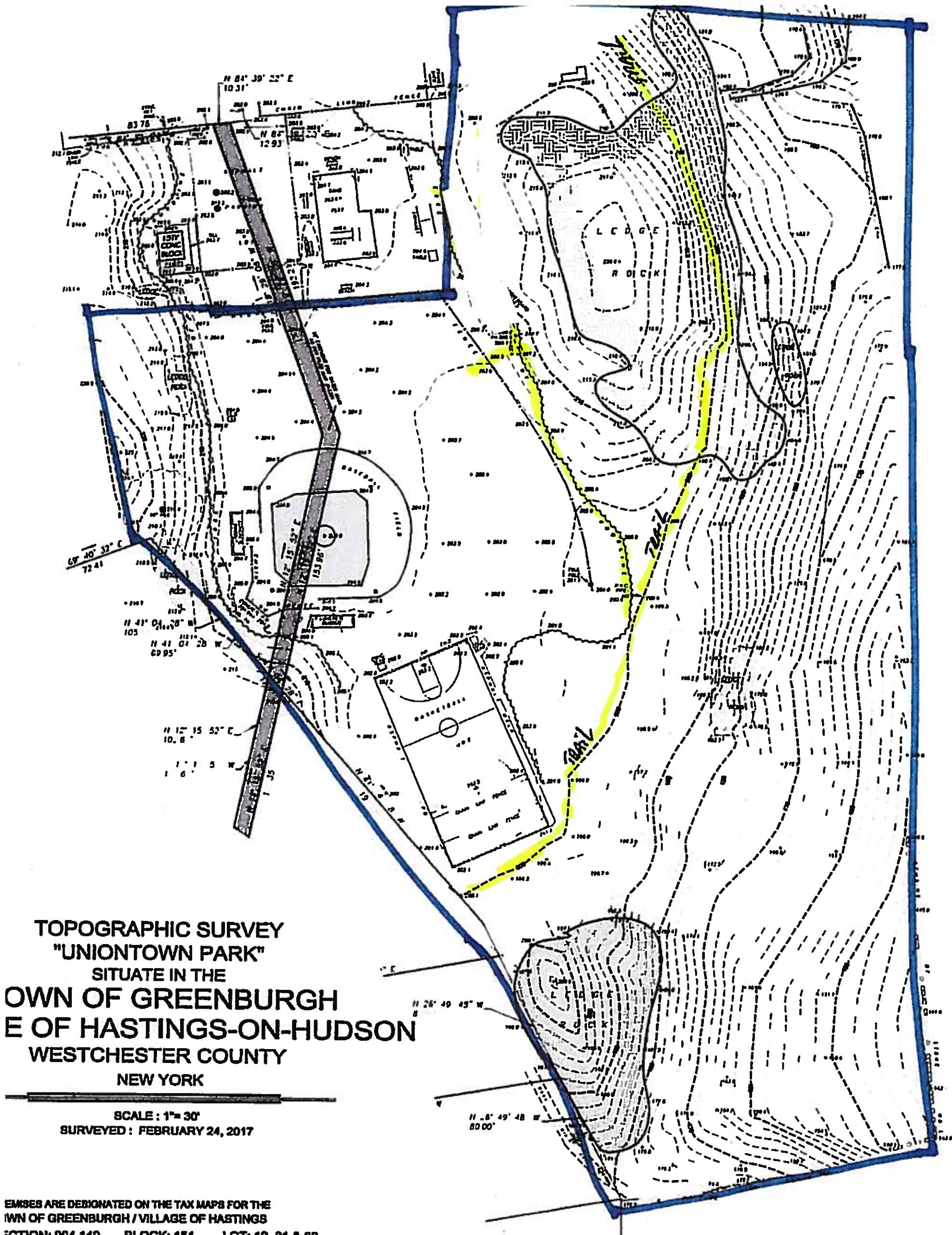


Pulver's Woods



Unfortunately the fall leaves obscure the trails in these photographs, but the trails' locations can still be seen, as can their destination of residential neighborhood.





N 84° 39' 22" E  
10.31'

N 84° 12' 93"  
12.93'

69° 40' 32" E  
72.41'

N 41° 01' 10" W  
105'

N 41° 01' 20" W  
69.95'

N 12° 15' 52" E  
10.8'

1' 1' 5" W  
1' 0'

N 26° 49' 43" W  
80.00'

N 8° 49' 48" W  
80.00'

LEDGE  
ROCK

Stream

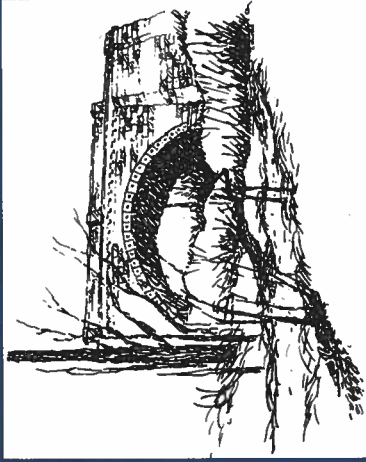
13TH CONC BLDG

BASEBALL FIELD

BASEBALL FIELD

CONCRETE





sketch by Christina Griffin

## ROWLEY'S BRIDGE / OCA TRAILWAY

- 1 entrance (Southside Avenue)
- 2 plateau-Hastings Beautification Committee
- 3 MTA Turnaround/scenic viewing
- 4 viewing
- 5 view of Rowley's Bridge
- 6 red maple plantation
- 7 OCA (Old Croton Aqueduct) culvert
- 8 footbridge/reflecting pool
- 9 foot bridge/to Rowley's Bridge
- 10 tree stumps/scenic viewing
- 11 trail access to Warburton Avenue and OCA

Rowley's brook and bridge are named after the Rowley family, who settled in the Pinecrest area of Hastings in 1846. They were gentleman farmers who cultivated grapevines for their vineyard.

The 100-foot stone arch masonry bridge was designed in 1892 by Samuel L. Cooper and was an integral part of the Warburton Avenue Extension Program, linking Yonkers with Hastings between 1893-98.

For a complete map of the OCA, call 693-5259.

