



VILLAGE OF HASTINGS-ON-HUDSON

Municipal Building
7 Maple Avenue
Hastings-on-Hudson, New York 10706
Mary Beth Murphy, Village Manager
villagemanager@Hastingsgov.org
914 478 3420

MARINE ENGINEERING CONSULTANT FOR SHORELINE EROSION REMEDIES IN MACEACHRON PARK IN THE VILLAGE OF HASTINGS-ON-HUDSON

August 3, 2021

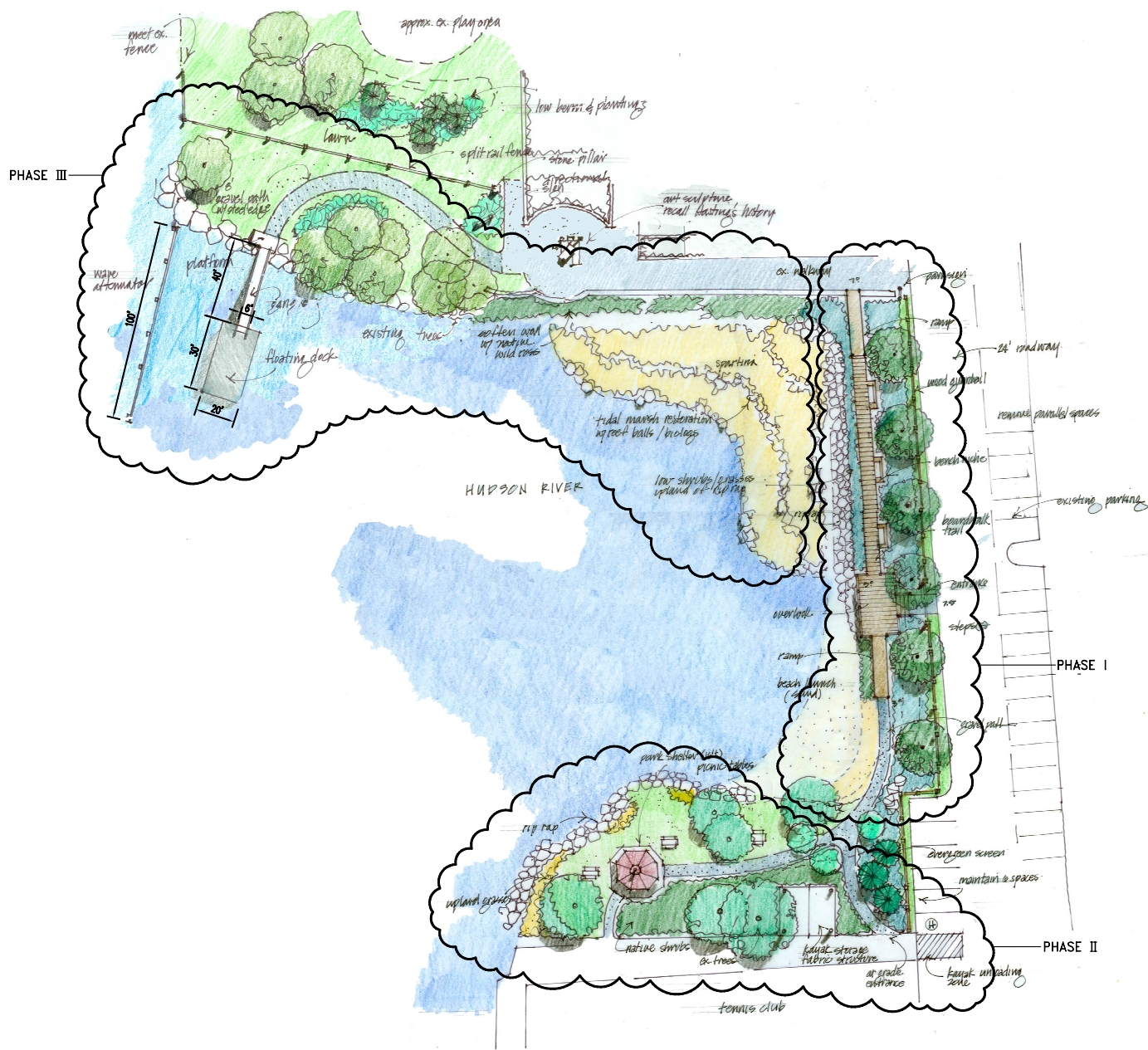
Addendum #2

Additional Resources:

The below link is to the Village's online collection of documents and information pertaining to the entirety of the waterfront.

<https://www.hastingsgov.org/current-issues/hastings-hudson-waterfront>

The second sheet of this addendum is a design from the early 2000's with a redesign of Kinnally Cove. The southern shore of MacEachron Park was included in this design.



- PHASE I: EAST SIDE COVE IMPROVEMENTS
 - DEBRIS REMOVAL
 - RIPRAP
 - BOARDWALK
 - SAND/BEACH RESTORATION
 - LANDSCAPING
- PHASE II: SOUTH SIDE COVE IMPROVEMENTS
 - DEBRIS REMOVAL
 - HULL DEMOLITION/FILL
 - RIPRAP
 - LANDSCAPING
- PHASE III: MACEACHRON PARK/BOAT LAUNCH
 - DEBRIS REMOVAL
 - PIER
 - BREAKWATER
 - FLOATING DOCK
 - LANDSCAPING
 - TIDAL MARSH

KINNALLY COVE	
SCHEMATIC SITE PLAN	
PROJECT NO.	10
SCALE	N
DATE	10-06
DRAWN BY	
CHECKED BY	
DRAWING NO.	S-1