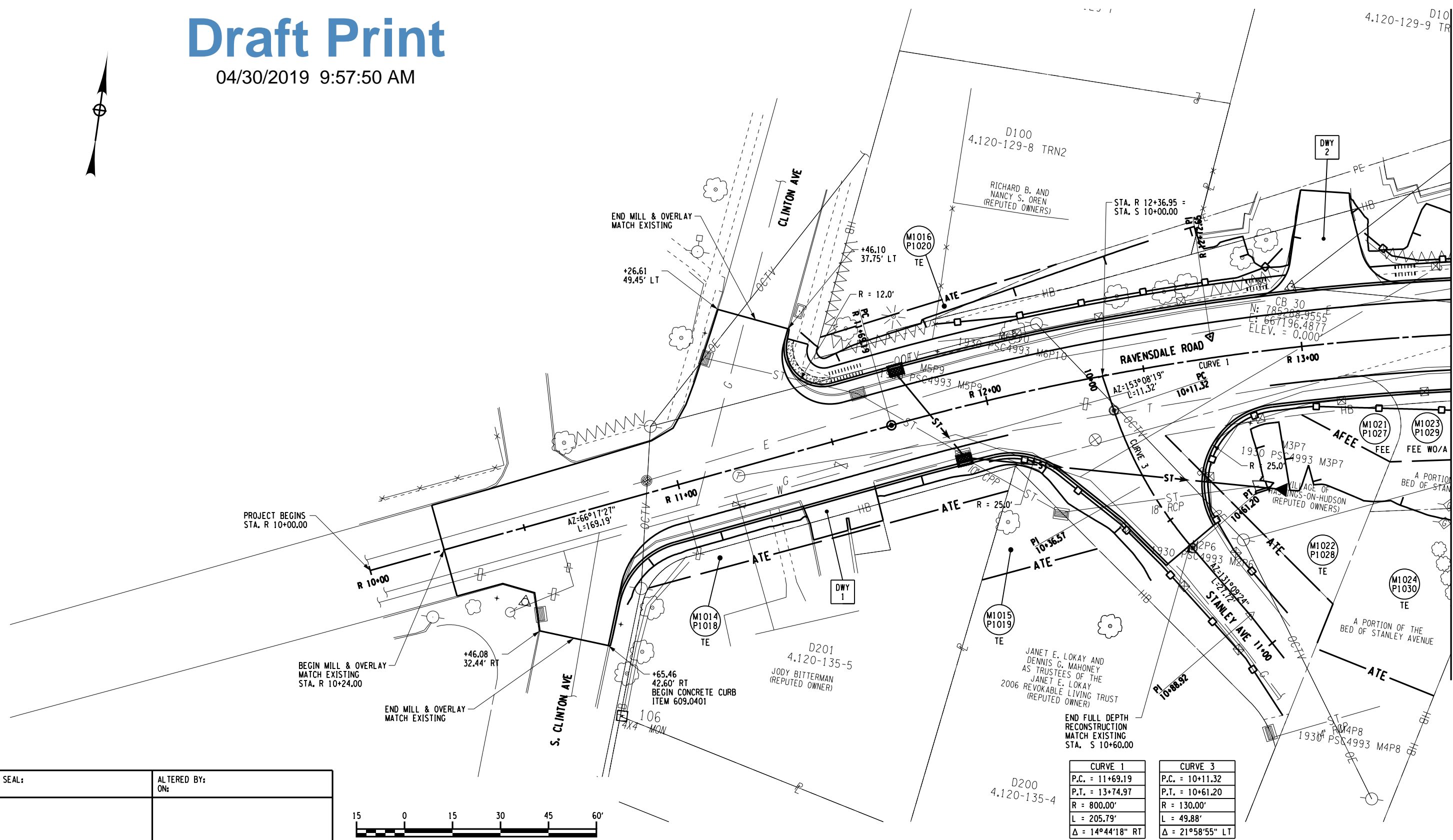


Draft Print

04/30/2019 9:57:50 AM

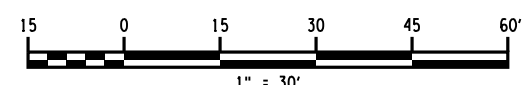


PROJECT MANAGER
CHECK
DRAFTING
CHECK
DESIGN
JOB MANAGER
DESIGN SUPERVISOR



FILE NAME : 875476_cph_gnp_01.dgn
DATE/TIME : 4/30/2019
USER : dcrtell 40575WS

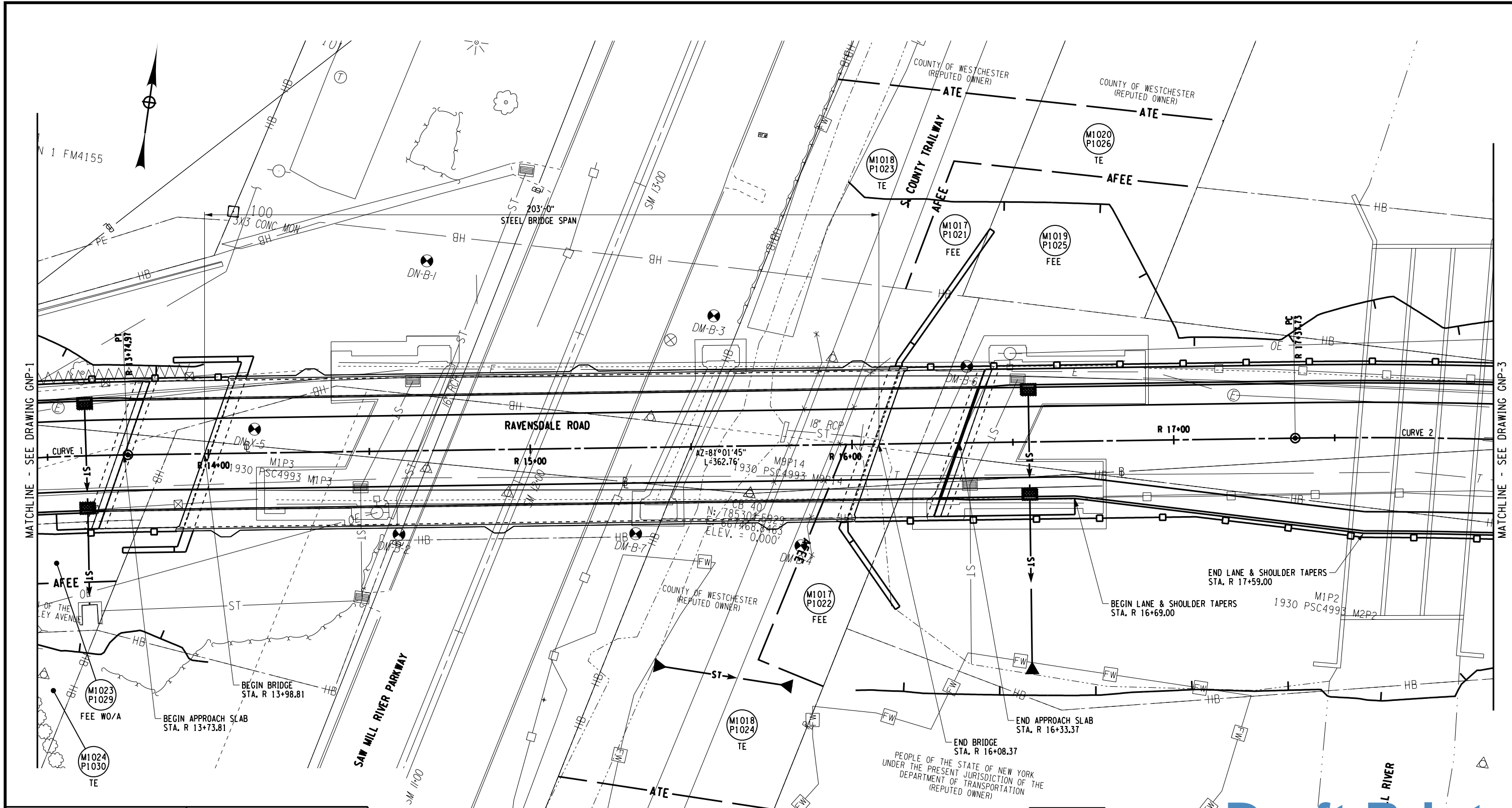
AFFIX SEAL: ON; ALTERED BY: ON;



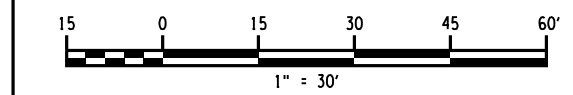
AS-BUILT REVISIONS DESCRIPTION OF ALTERATIONS:	RAVENSDALE ROAD OVER SAW MILL RIVER PARKWAY	PIN 8754.76	BRIDGES BIN 5520100	CULVERTS	ALL DIMENSIONS IN FT UNLESS OTHERWISE NOTED	CONTRACT NUMBER XXXXXXX
	SAW MILL RIVER PARKWAY, YONKERS CITY LINE - TACONIC	DATE:				
	STATE PARKWAY - HAWTHORNE S.H. 9485					SHEET NO.
	VILLAGE: HASTINGS ON HUDSON, TOWN: GREENBURGH					
	COUNTY: WESTCHESTER REGION: 8					
IT IS A VIOLATION OF LAW FOR ANY PERSON, UNLESS THEY ARE ACTING UNDER THE DIRECTION OF A LICENSED PROFESSIONAL ENGINEER, ARCHITECT, LANDSCAPE ARCHITECT, OR LAND SURVEYOR, TO ALTER AN ITEM IN ANY WAY, IF AN ITEM BEARING THE STAMP OF A LICENSED PROFESSIONAL IS ALTERED, THE ALTERING ENGINEER, ARCHITECT, LANDSCAPE ARCHITECT, OR LAND SURVEYOR SHALL STAMP THE DOCUMENT AND INCLUDE THE NOTATION "ALTERED BY" FOLLOWED BY THEIR SIGNATURE, THE DATE OF SUCH ALTERATION, AND A SPECIFIC DESCRIPTION OF THE ALTERATION.						
LOCHNER STATE OF OPPORTUNITY					RAVENSDALE ROAD GENERATOR PLAN SAW MILL RIVER PARKWAY Department of Transportation	

FILE NAME : 875476_cph_gnp_02.dgn
 DATE/TIME : 4/30/2019 4:05:57 AM
 USER : dcr1ell1

PROJECT MANAGER
 CHECK
 DRAFTING
 CHECK
 DESIGN
 JOB MANAGER
 DESIGN SUPERVISOR



AFFIX SEAL: ON:	ALTERED BY: ON:
AS-BUILT REVISIONS DESCRIPTION OF ALTERATIONS:	



RAVENSDALE ROAD OVER SAW MILL RIVER PARKWAY	PIN 8754.76
SAW MILL RIVER PARKWAY, YONKERS CITY LINE - TACONIC	BRIDGES BIN 5520100
STATE PARKWAY - HAWTHORNE S.H. 9485	CULVERTS
VILLAGE: HASTINGS ON HUDSON, TOWN: GREENBURGH	ALL DIMENSIONS IN FT UNLESS OTHERWISE NOTED
COUNTY: WESTCHESTER REGION: 8	CONTRACT NUMBER XXXXXXX

DATE:	BRIDGES BIN 5520100
	CULVERTS

RAVENSDALE ROAD GENERATOR PLAN SAW MILL RIVER PARKWAY	DRAWING NO. GNP-2 SHEET NO.
---	--------------------------------

CURVE 2
P.C. = 17+37.73
P.T. = 19+37.15
R = 1500.00'
L = 199.42'
Δ = 7°37'02"RT

Draft Print

04/30/2019 9:57:59 AM

IT IS A VIOLATION OF LAW FOR ANY PERSON, UNLESS THEY ARE ACTING UNDER THE DIRECTION OF A LICENSED PROFESSIONAL ENGINEER, ARCHITECT, LANDSCAPE ARCHITECT, OR LAND SURVEYOR, TO ALTER AN ITEM IN ANY WAY, IF AN ITEM BEARING THE STAMP OF A LICENSED PROFESSIONAL IS ALTERED, THE ALTERING ENGINEER, ARCHITECT, LANDSCAPE ARCHITECT, OR LAND SURVEYOR SHALL STAMP THE DOCUMENT AND INCLUDE THE NOTATION "ALTERED BY" FOLLOWED BY THEIR SIGNATURE, THE DATE OF SUCH ALTERATION, AND A SPECIFIC DESCRIPTION OF THE ALTERATION.

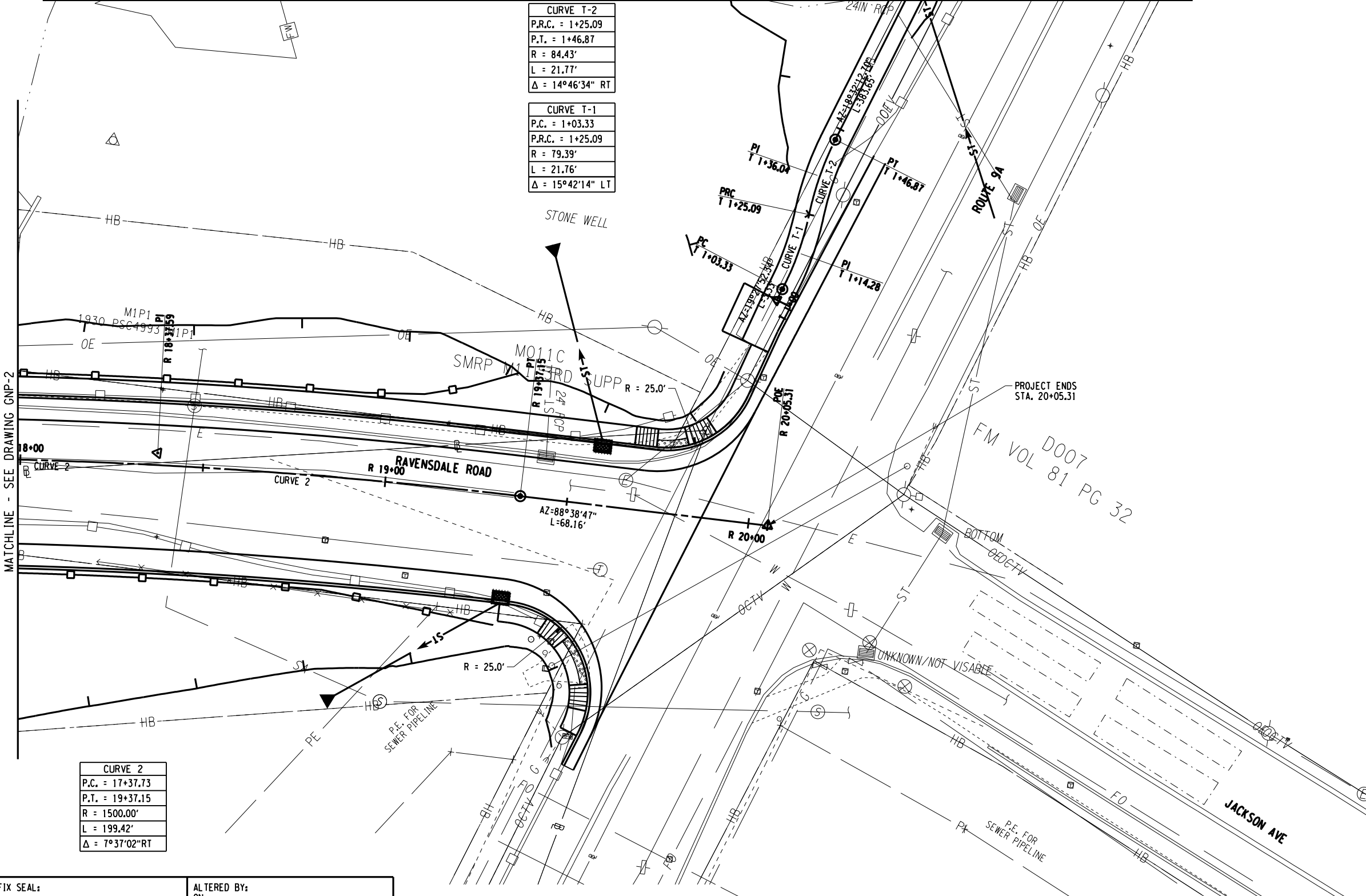
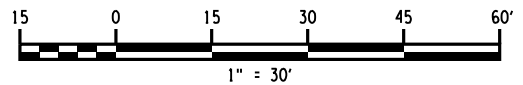
FILE NAME : 875476_cph_gnp_03.dgn
 DATE/TIME : 4/30/2019 4:05:57PM
 USER : dcrilli 40575WS

PROJECT MANAGER
 CHECK
 DRAFTING
 CHECK
 DESIGN
 JOB MANAGER
 DESIGN SUPERVISOR

MATCHLINE - SEE DRAWING GNP-3A

CURVE T-2	
P.R.C. = 1+25.09	
P.T. = 1+46.87	
R = 84.43'	
L = 21.77'	
Δ = 14°46'34" RT	
CURVE T-1	
P.C. = 1+03.33	
P.R.C. = 1+25.09	
R = 79.39'	
L = 21.76'	
Δ = 15°42'14" LT	

CURVE 2	
P.C. = 17+37.73	
P.T. = 19+37.15	
R = 1500.00'	
L = 199.42'	
Δ = 7°37'02" RT	



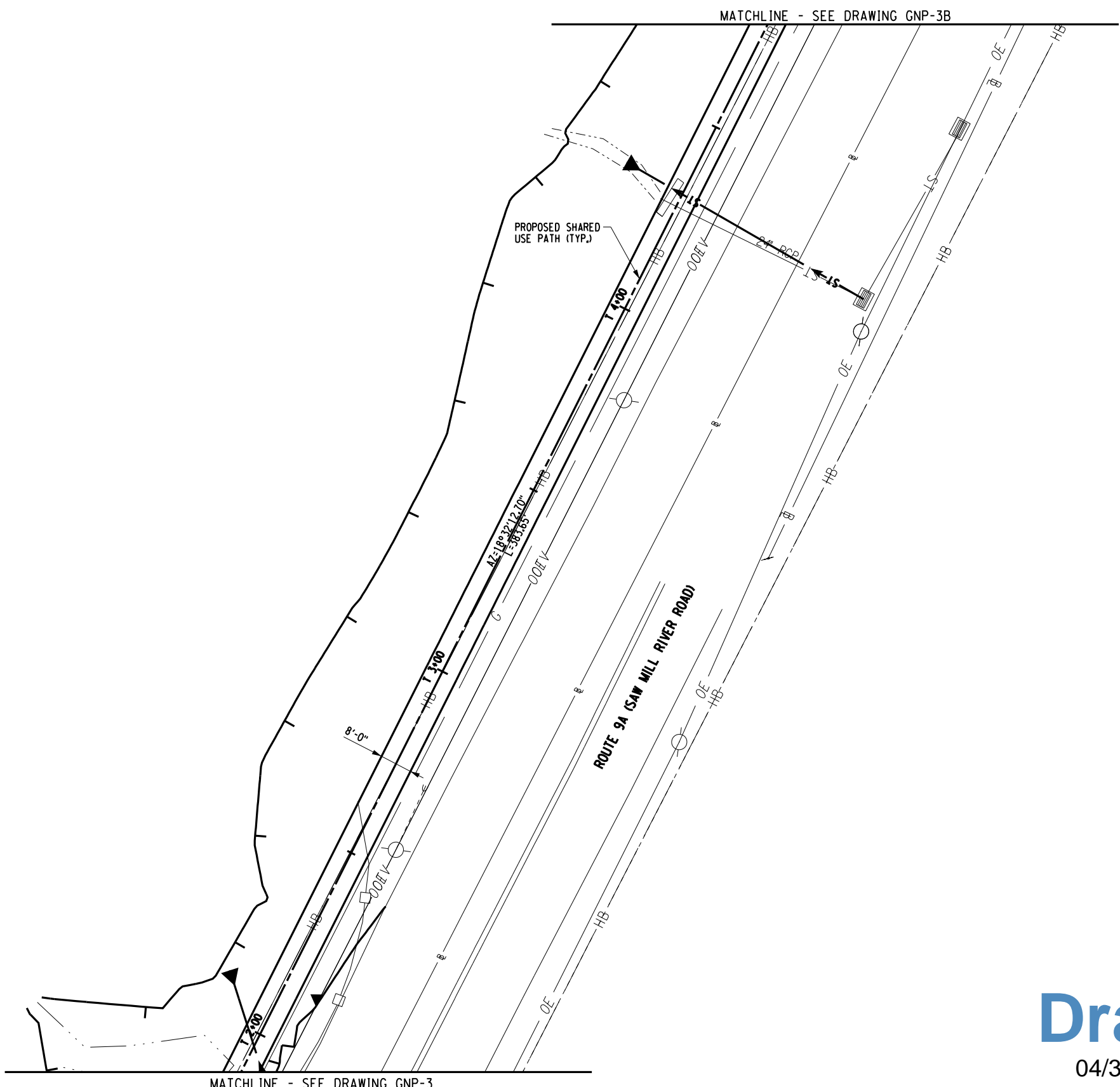
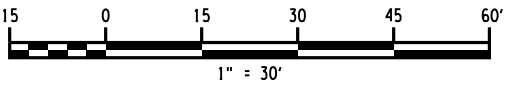
Draft Print
 04/30/2019 9:57:59 AM

AFFIX SEAL: ON:	ALTERED BY: ON:

AS-BUILT REVISIONS DESCRIPTION OF ALTERATIONS:	RAVENSDALE ROAD OVER SAW MILL RIVER PARKWAY	PIN 8754.76	BRIDGES BIN 5520100	CULVERTS	ALL DIMENSIONS IN FT UNLESS OTHERWISE NOTED	CONTRACT NUMBER XXXXXXX
	SAW MILL RIVER PARKWAY, YONKERS CITY LINE - TACONIC	DATE:				DRAWING NO. GNP-3
	STATE PARKWAY - HAWTHORNE S.H. 9485					SHEET NO.
	VILLAGE: HASTINGS ON HUDSON, TOWN: GREENBURGH					
	COUNTY: WESTCHESTER REGION: 8					
IT IS A VIOLATION OF LAW FOR ANY PERSON, UNLESS THEY ARE ACTING UNDER THE DIRECTION OF A LICENSED PROFESSIONAL ENGINEER, ARCHITECT, LANDSCAPE ARCHITECT, OR LAND SURVEYOR, TO ALTER AN ITEM IN ANY WAY, IF AN ITEM BEARING THE STAMP OF A LICENSED PROFESSIONAL IS ALTERED, THE ALTERING ENGINEER, ARCHITECT, LANDSCAPE ARCHITECT, OR LAND SURVEYOR SHALL STAMP THE DOCUMENT AND INCLUDE THE NOTATION "ALTERED BY" FOLLOWED BY THEIR SIGNATURE, THE DATE OF SUCH ALTERATION, AND A SPECIFIC DESCRIPTION OF THE ALTERATION.						RAVENSDALE ROAD GENERATOR PLAN SAW MILL RIVER PARKWAY
LOCHNER					Department of Transportation	

FILE NAME : 875476_cph_gnp_03A.dgn
 DATE/TIME : 4/30/2019
 USER : dcrill1 40575WS

DESIGN SUPERVISOR
 JOB MANAGER
 DESIGN
 CHECK
 DRAFTING
 CHECK
 PROJECT MANAGER



AFFIX SEAL: ON:	ALTERED BY: ON:

AS-BUILT REVISIONS DESCRIPTION OF ALTERATIONS:	RAVENSDALE ROAD OVER SAW MILL RIVER PARKWAY	PIN 8754.76	BRIDGES BIN 5520100	CULVERTS	ALL DIMENSIONS IN FT UNLESS OTHERWISE NOTED	CONTRACT NUMBER
	SAW MILL RIVER PARKWAY, YONKERS CITY LINE - TACONIC STATE PARKWAY - HAWTHORNE S.H. 9485 VILLAGE: HASTINGS ON HUDSON, TOWN: GREENBURGH COUNTY: WESTCHESTER REGION: 8	DATE:			RAVENSDALE ROAD OVER SAW MILL RIVER PARKWAY GENERAL PLAN	DRAWING NO. GNP-3A SHEET NO.
IT IS A VIOLATION OF LAW FOR ANY PERSON, UNLESS THEY ARE ACTING UNDER THE DIRECTION OF A LICENSED PROFESSIONAL ENGINEER, ARCHITECT, LANDSCAPE ARCHITECT, OR LAND SURVEYOR, TO ALTER AN ITEM IN ANY WAY, IF AN ITEM BEARING THE STAMP OF A LICENSED PROFESSIONAL IS ALTERED, THE ALTERING ENGINEER, ARCHITECT, LANDSCAPE ARCHITECT, OR LAND SURVEYOR SHALL STAMP THE DOCUMENT AND INCLUDE THE NOTATION "ALTERED BY" FOLLOWED BY THEIR SIGNATURE, THE DATE OF SUCH ALTERATION, AND A SPECIFIC DESCRIPTION OF THE ALTERATION.					LOCHNER	Department of Transportation

Draft Print
 04/30/2019 9:57:59 AM

PROJECT MANAGER

CHECK

DRAFTING

CHECK

DESIGN

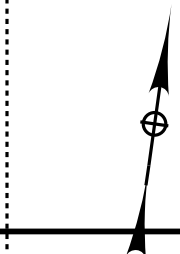
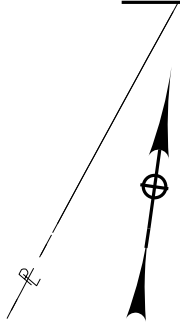
JOB MANAGER

DESIGN SUPERVISOR

FILE NAME : 875476_cph_gnp_03B.dgn
DATE/TIME : 4/30/2019 9:57:59 AM
USER : dcrille1 40575WS

MATCHLINE - SEE DRAWING GNP-3C

MATCHLINE - SEE DRAWING GNP-3B
MATCHLINE - SEE DRAWING GNP-3A



SAW MILL RIVER

ROUTE 9A ISAW MILL RIVER ROAD

CURVE T-6	
P.R.C. = 6+74.17	
P.T. = 7+24.61	
R = 275.02'	
L = 50.43'	
Δ = 10°30'26" RT	

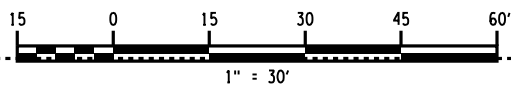
CURVE T-5	
P.C. = 6+24.23	
P.R.C. = 6+74.17	
R = 129.48'	
L = 49.95'	
Δ = 22°06'07" LT	

CURVE T-4	
P.R.C. = 5+65.74	
P.T. = 6+04.18	
R = 285.41'	
L = 38.44'	
Δ = 7°43'01" RT	

CURVE T-3	
P.C. = 5+30.51	
P.R.C. = 5+65.74	
R = 35.19'	
L = 35.23'	
Δ = 57°21'43" LT	

PROPOSED SHARED USE PATH (TYP.)

PROPOSED SHARED USE PATH (TYP.)



Draft Print

04/30/2019 9:57:59 AM

AFFIX SEAL: ON:	ALTERED BY: ON:

AS-BUILT REVISIONS DESCRIPTION OF ALTERATIONS:	RAVENSDALE ROAD OVER SAW MILL RIVER PARKWAY SAW MILL RIVER PARKWAY, YONKERS CITY LINE - TACONIC STATE PARKWAY - HAWTHORNE S.H. 9485 VILLAGE: HASTINGS ON HUDSON, TOWN: GREENBURGH COUNTY: WESTCHESTER REGION: 8	PIN 8754.76 DATE:	BRIDGES BIN 5520100	CULVERTS	ALL DIMENSIONS IN FT UNLESS OTHERWISE NOTED RAVENSDALE ROAD OVER SAW MILL RIVER PARKWAY GENERAL PLAN	CONTRACT NUMBER DRAWING NO. GNP-3B SHEET NO.
---	---	----------------------	------------------------	----------	--	--

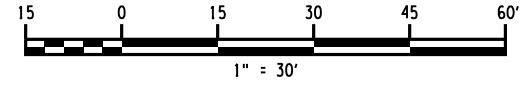
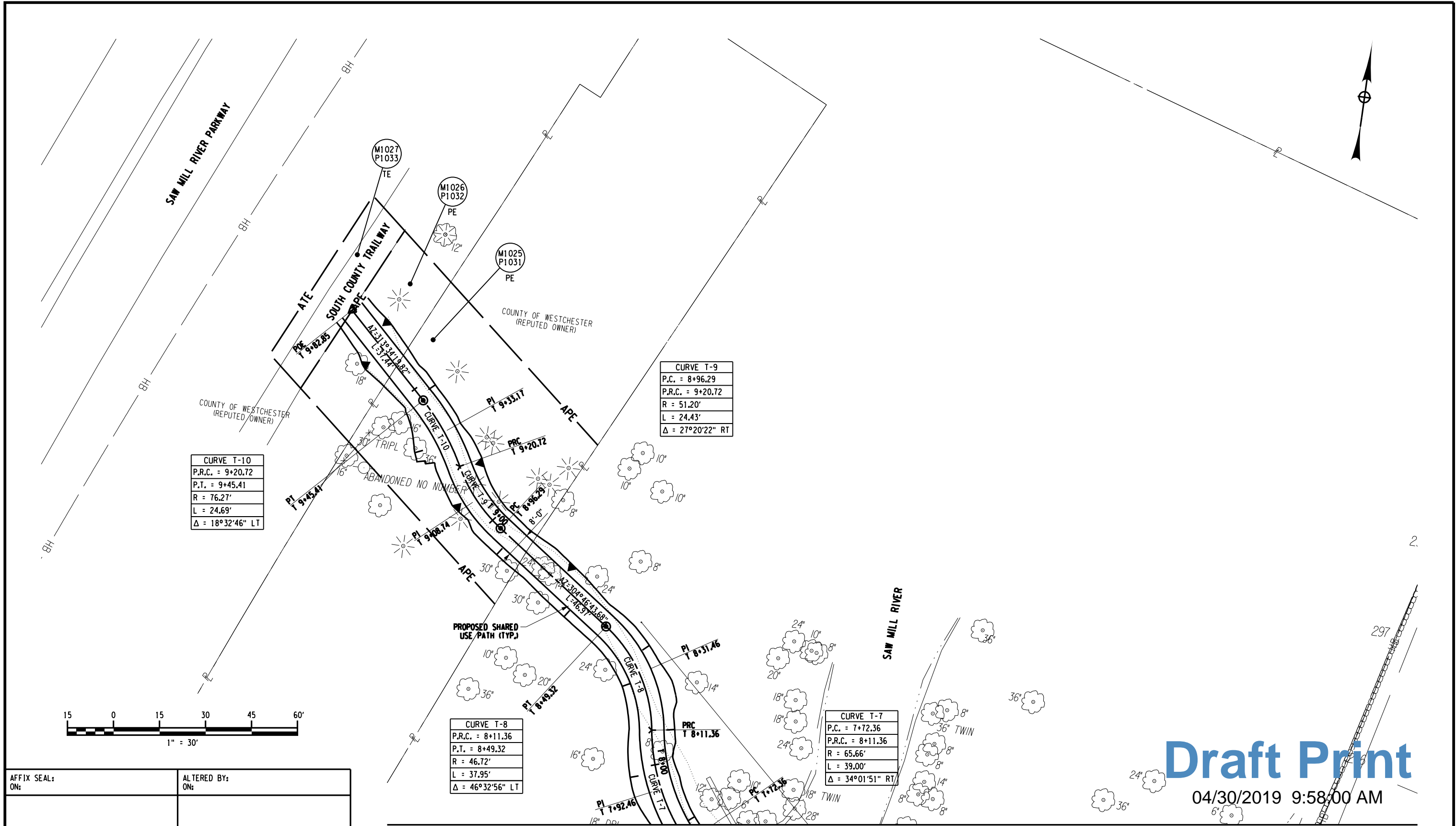
IT IS A VIOLATION OF LAW FOR ANY PERSON, UNLESS THEY ARE ACTING UNDER THE DIRECTION OF A LICENSED PROFESSIONAL ENGINEER, ARCHITECT, LANDSCAPE ARCHITECT, OR LAND SURVEYOR, TO ALTER AN ITEM IN ANY WAY, IF AN ITEM BEARING THE STAMP OF A LICENSED PROFESSIONAL IS ALTERED, THE ALTERING ENGINEER, ARCHITECT, LANDSCAPE ARCHITECT, OR LAND SURVEYOR SHALL STAMP THE DOCUMENT AND INCLUDE THE NOTATION "ALTERED BY" FOLLOWED BY THEIR SIGNATURE, THE DATE OF SUCH ALTERATION, AND A SPECIFIC DESCRIPTION OF THE ALTERATION.

LOCHNER



FILE NAME : 875476_cph_gnp_03C.dgn
 DATE/TIME : 4/30/2019
 USER : dcrillel 40575WS

PROJECT MANAGER
 CHECK
 DRAFTING
 CHECK
 DESIGN
 JOB MANAGER
 DESIGN SUPERVISOR



CURVE T-10	
P.R.C. =	9+20.72
P.T. =	9+45.41
R =	76.27'
L =	24.69'
Δ =	18°32'46" LT

CURVE T-9	
P.C. =	8+96.29
P.R.C. =	9+20.72
R =	51.20'
L =	24.43'
Δ =	27°20'22" RT

CURVE T-8	
P.R.C. =	8+11.36
P.T. =	8+49.32
R =	46.72'
L =	37.95'
Δ =	46°32'56" LT

CURVE T-7	
P.C. =	7+72.36
P.R.C. =	8+11.36
R =	65.66'
L =	39.00'
Δ =	34°01'51" RT

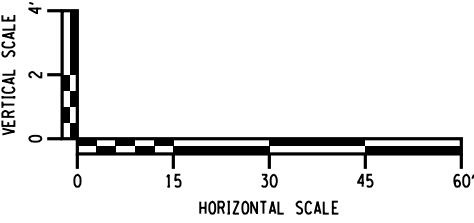
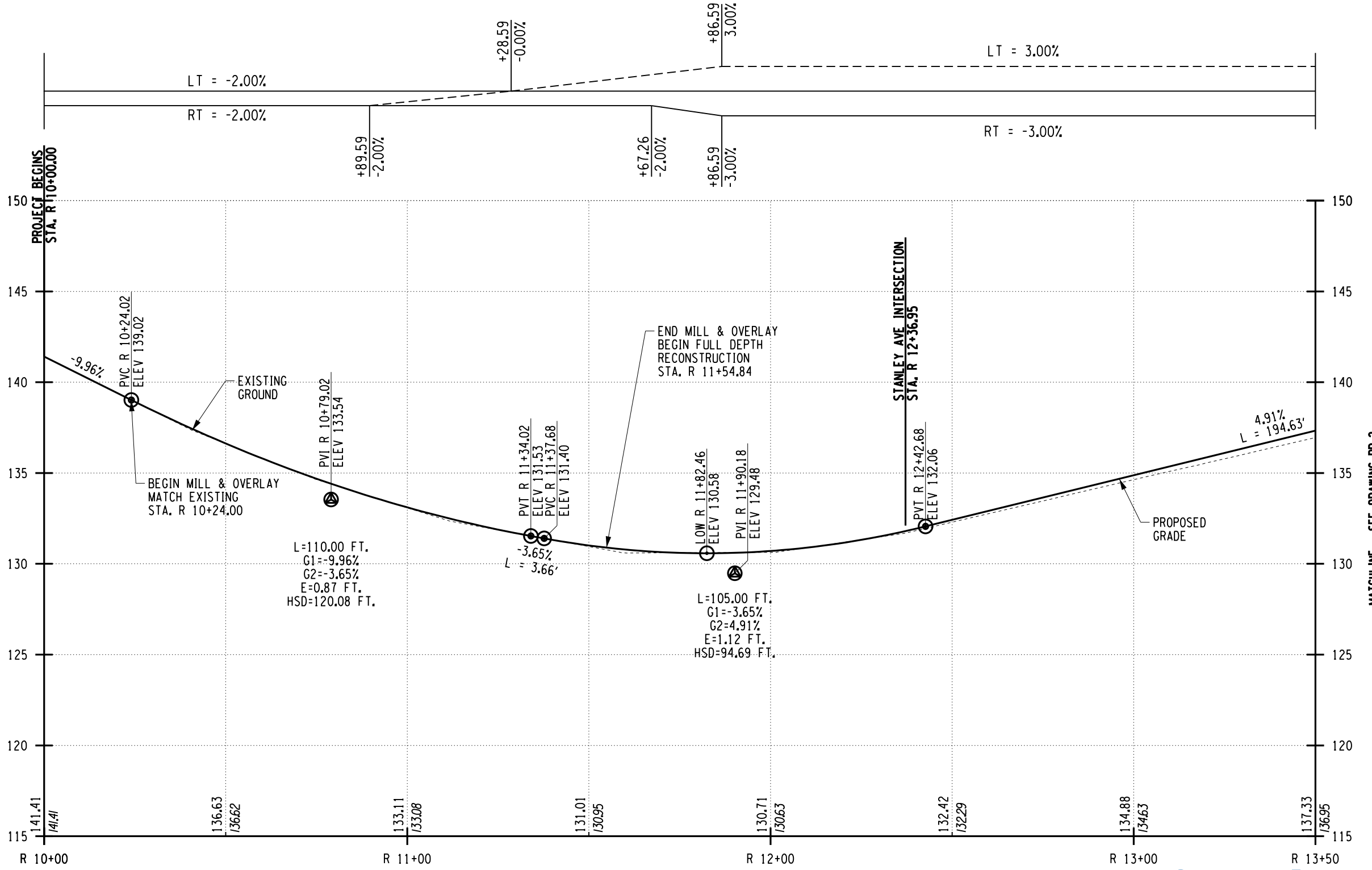
AFFIX SEAL: ON: _____
 ALTERED BY: ON: _____

MATCHLINE - SEE DRAWING GNP-3B

Draft Print
 04/30/2019 9:58:00 AM

AS-BUILT REVISIONS DESCRIPTION OF ALTERATIONS:	RAVENSDALE ROAD OVER SAW MILL RIVER PARKWAY	PIN 8754.76	BRIDGES BIN 5520100	CULVERTS	ALL DIMENSIONS IN FT UNLESS OTHERWISE NOTED	CONTRACT NUMBER
	SAW MILL RIVER PARKWAY, YONKERS CITY LINE - TACONIC STATE PARKWAY - HAWTHORNE S.H. 9485 VILLAGE: HASTINGS ON HUDSON, TOWN: GREENBURGH COUNTY: WESTCHESTER REGION: 8	DATE:				RAVENSDALE ROAD OVER SAW MILL RIVER PARKWAY GENERAL PLAN
IT IS A VIOLATION OF LAW FOR ANY PERSON, UNLESS THEY ARE ACTING UNDER THE DIRECTION OF A LICENSED PROFESSIONAL ENGINEER, ARCHITECT, LANDSCAPE ARCHITECT, OR LAND SURVEYOR, TO ALTER AN ITEM IN ANY WAY, IF AN ITEM BEARING THE STAMP OF A LICENSED PROFESSIONAL IS ALTERED, THE ALTERING ENGINEER, ARCHITECT, LANDSCAPE ARCHITECT, OR LAND SURVEYOR SHALL STAMP THE DOCUMENT AND INCLUDE THE NOTATION "ALTERED BY" FOLLOWED BY THEIR SIGNATURE, THE DATE OF SUCH ALTERATION, AND A SPECIFIC DESCRIPTION OF THE ALTERATION.						

PROJECT MANAGER
CHECK
DRAFTING
CHECK
DESIGN
JOB MANAGER
DESIGN SUPERVISOR



RAVENSDALE ROAD PROFILE

Draft Print

04/30/2019 9:58:00 AM

AFFIX SEAL: ON:	ALTERED BY: ON:
<p>IT IS A VIOLATION OF LAW FOR ANY PERSON, UNLESS THEY ARE ACTING UNDER THE DIRECTION OF A LICENSED PROFESSIONAL ENGINEER, ARCHITECT, LANDSCAPE ARCHITECT, OR LAND SURVEYOR, TO ALTER AN ITEM IN ANY WAY, IF AN ITEM BEARING THE STAMP OF A LICENSED PROFESSIONAL IS ALTERED, THE ALTERING ENGINEER, ARCHITECT, LANDSCAPE ARCHITECT, OR LAND SURVEYOR SHALL STAMP THE DOCUMENT AND INCLUDE THE NOTATION "ALTERED BY" FOLLOWED BY THEIR SIGNATURE, THE DATE OF SUCH ALTERATION, AND A SPECIFIC DESCRIPTION OF THE ALTERATION.</p>	

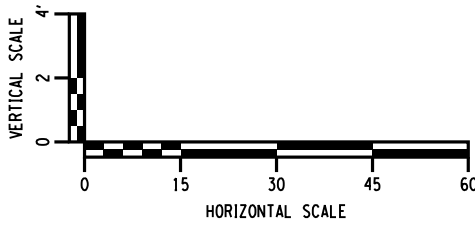
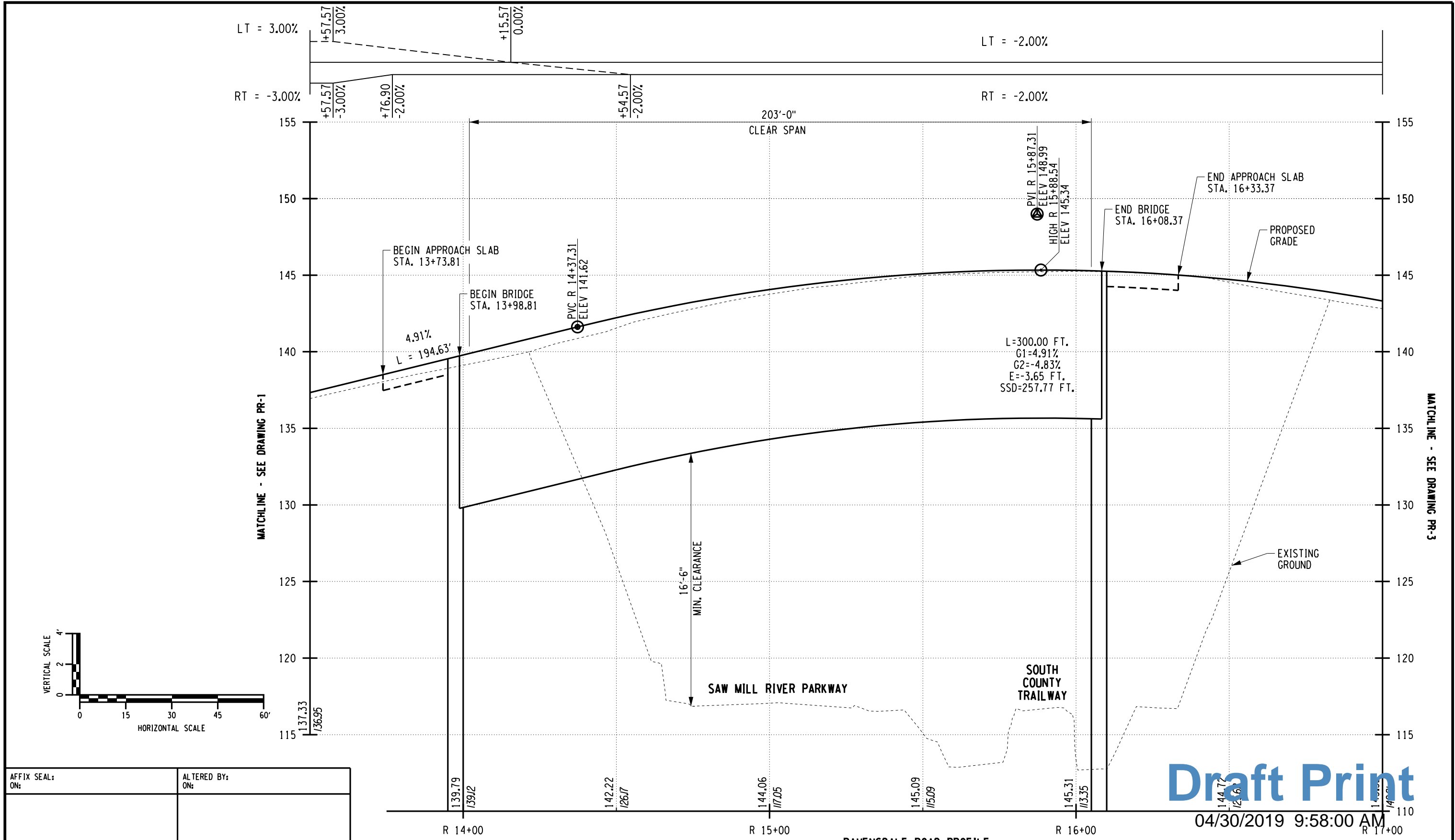
AS-BUILT REVISIONS DESCRIPTION OF ALTERATIONS:	RAVENSDALE ROAD OVER SAW MILL RIVER PARKWAY SAW MILL RIVER PARKWAY, YONKERS CITY LINE - TACONIC STATE PARKWAY - HAWTHORNE S.H. 9485 VILLAGE: HASTINGS ON HUDSON, TOWN: GREENBURGH COUNTY: WESTCHESTER REGION: 8	PIN 8754.76 DATE:	BRIDGES BIN 5520100	CULVERTS	ALL DIMENSIONS IN FT UNLESS OTHERWISE NOTED	CONTRACT NUMBER XXXXXXX
<p>RAVENSDALE ROAD GENERAL PROFILE SAW MILL RIVER PARKWAY</p>					DRAWING NO. PRO-1 SHEET NO.	
<p>LOCHNER</p>						

FILE NAME : 875476_cph_pr_01.dgn
DATE/TIME : 4/30/2019
USER : dcrille1 40575WS

MATCHLINE - SEE DRAWING PR-2

FILE NAME : 875476_cph_pr_02.dgn
 DATE/TIME : 4/30/2019 9:58:00 AM
 USER : dcrill, 40575WS

DESIGN SUPERVISOR
 JOB MANAGER
 DESIGN
 CHECK
 DRAFTING
 CHECK
 PROJECT MANAGER



AFFIX SEAL: ON:	ALTERED BY: ON:
<p>IT IS A VIOLATION OF LAW FOR ANY PERSON, UNLESS THEY ARE ACTING UNDER THE DIRECTION OF A LICENSED PROFESSIONAL ENGINEER, ARCHITECT, LANDSCAPE ARCHITECT, OR LAND SURVEYOR, TO ALTER AN ITEM IN ANY WAY, IF AN ITEM BEARING THE STAMP OF A LICENSED PROFESSIONAL IS ALTERED, THE ALTERING ENGINEER, ARCHITECT, LANDSCAPE ARCHITECT, OR LAND SURVEYOR SHALL STAMP THE DOCUMENT AND INCLUDE THE NOTATION "ALTERED BY" FOLLOWED BY THEIR SIGNATURE, THE DATE OF SUCH ALTERATION, AND A SPECIFIC DESCRIPTION OF THE ALTERATION.</p>	

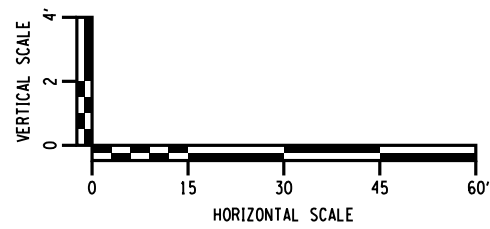
AS-BUILT REVISIONS DESCRIPTION OF ALTERATIONS:	RAVENSDALE ROAD OVER SAW MILL RIVER PARKWAY SAW MILL RIVER PARKWAY, YONKERS CITY LINE - TACONIC STATE PARKWAY - HAWTHORNE S.H. 9485 VILLAGE: HASTINGS ON HUDSON, TOWN: GREENBURGH COUNTY: WESTCHESTER REGION: 8	PIN 8754.76 DATE:	BRIDGES BIN 5520100	CULVERTS	ALL DIMENSIONS IN FT UNLESS OTHERWISE NOTED	CONTRACT NUMBER XXXXXXX
RAVENSDALE ROAD OVER PROFILE SAW MILL RIVER PARKWAY					DRAWING NO. PRO-2 SHEET NO.	
<p>LOCHNER</p>					<p>NEW YORK STATE OF OPPORTUNITY Department of Transportation</p>	

Draft Print

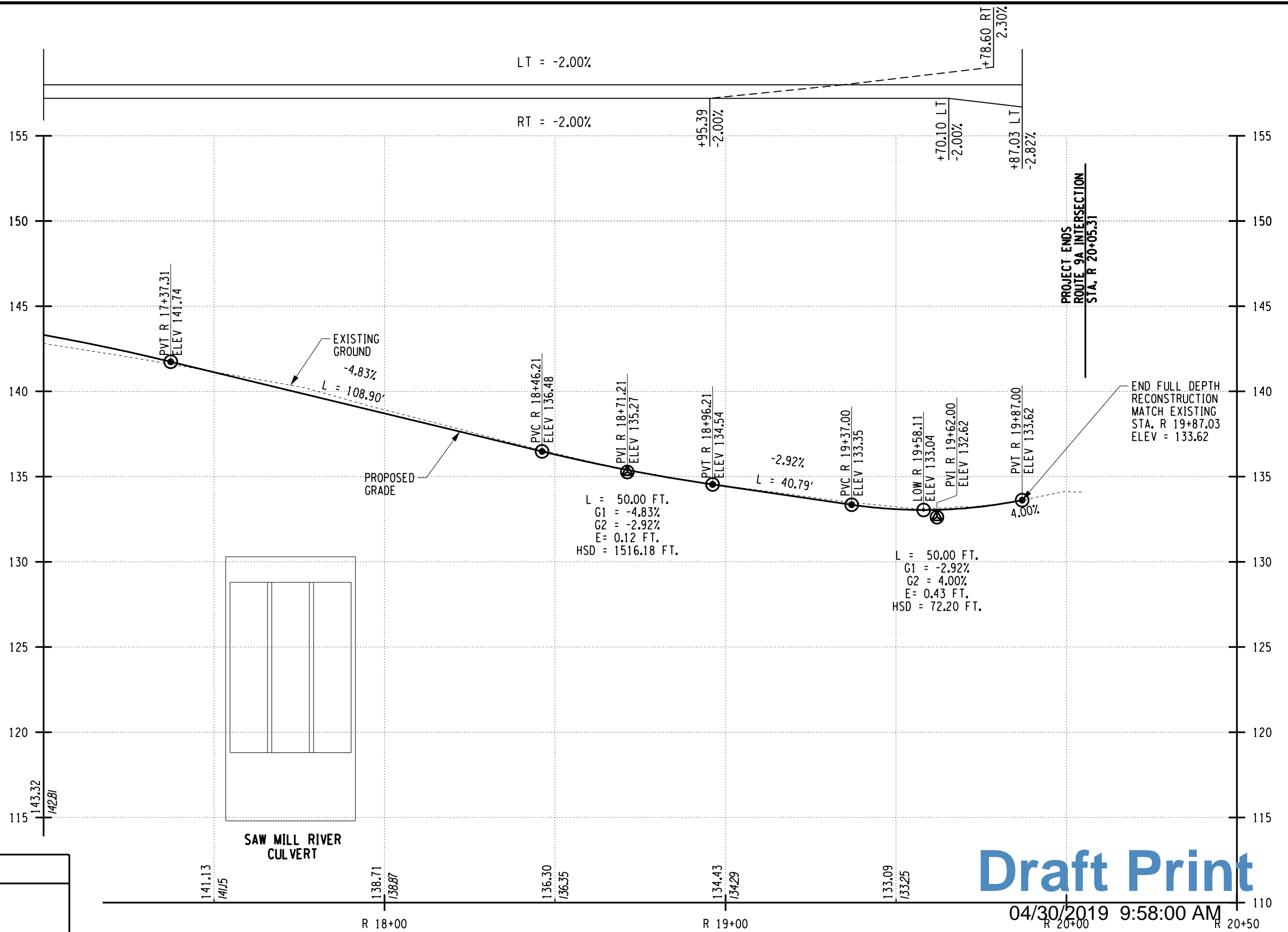
04/30/2019 9:58:00 AM

FILE NAME : 875476_cph_pr_03.dgn
 DATE/TIME : 4/30/2019 9:58:00 AM
 USER : dcrutelli 40575WS

DESIGN SUPERVISOR | JOB MANAGER | DESIGN | CHECK | DRAFTING | CHECK | PROJECT MANAGER



MATCHLINE - SEE DRAWING PR-2



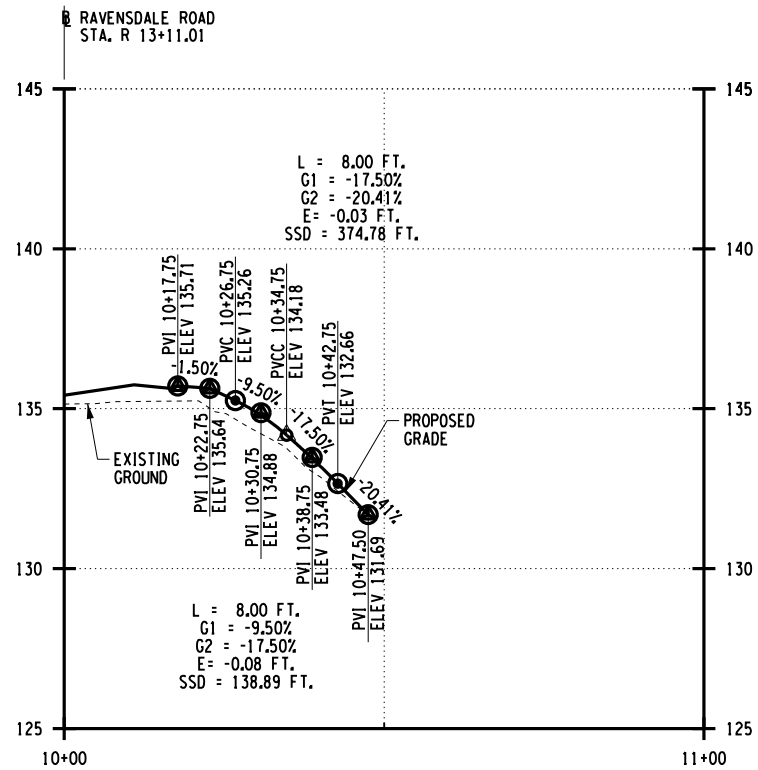
SAW MILL RIVER CULVERT

Draft Print

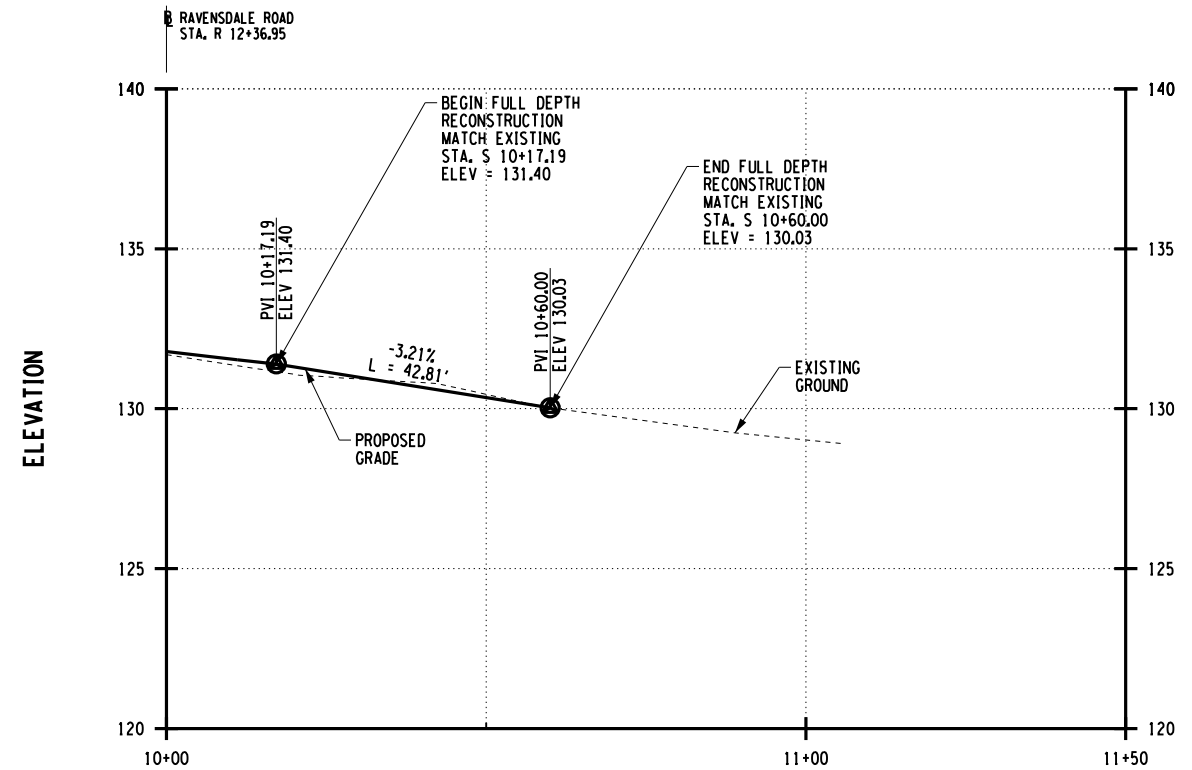
04/30/2019 9:58:00 AM

AFFIX SEAL: ON:	ALTERED BY: ON:
<p>IT IS A VIOLATION OF LAW FOR ANY PERSON, UNLESS THEY ARE ACTING UNDER THE DIRECTION OF A LICENSED PROFESSIONAL ENGINEER, ARCHITECT, LANDSCAPE ARCHITECT, OR LAND SURVEYOR, TO ALTER AN ITEM IN ANY WAY, IF AN ITEM BEARING THE STAMP OF A LICENSED PROFESSIONAL IS ALTERED, THE ALTERING ENGINEER, ARCHITECT, LANDSCAPE ARCHITECT, OR LAND SURVEYOR SHALL STAMP THE DOCUMENT AND INCLUDE THE NOTATION "ALTERED BY" FOLLOWED BY THEIR SIGNATURE, THE DATE OF SUCH ALTERATION, AND A SPECIFIC DESCRIPTION OF THE ALTERATION.</p>	

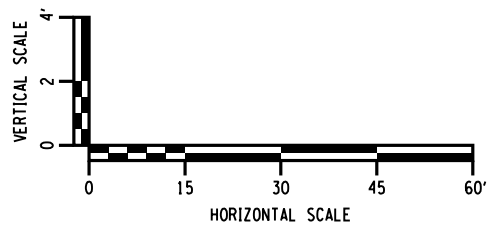
AS-BUILT REVISIONS DESCRIPTION OF ALTERATIONS:	RAVENSDALE ROAD OVER SAW MILL RIVER PARKWAY SAW MILL RIVER PARKWAY, YONKERS CITY LINE - TACONIC STATE PARKWAY - HAWTHORNE S.H. 9485 VILLAGE: HASTINGS ON HUDSON, TOWN: GREENBURGH COUNTY: WESTCHESTER REGION: 8	PIN 8754.76 DATE:	BRIDGES BIN 5520100	CULVERTS	ALL DIMENSIONS IN FT UNLESS OTHERWISE NOTED	CONTRACT NUMBER XXXXXXX
RAVENSDALE ROAD GENERAL PROFILE SAW MILL RIVER PARKWAY					DRAWING NO. PRO-3 SHEET NO.	
LOCHNER						



PRIVATE DRIVEWAY PROFILE - STA. R 13+11.01 LT.



STANLEY AVENUE PROFILE



Draft Print

04/30/2019 9:58:01 AM

AFFIX SEAL: ON:	ALTERED BY: ON:
<p>AS-BUILT REVISIONS DESCRIPTION OF ALTERATIONS:</p>	

RAVENSDALE ROAD OVER SAW MILL RIVER PARKWAY	PIN 8754.76	BRIDGES BIN 5520100	CULVERTS	ALL DIMENSIONS IN FT UNLESS OTHERWISE NOTED	CONTRACT NUMBER XXXXXXX
SAW MILL RIVER PARKWAY, YONKERS CITY LINE - TACONIC	DATE:			RAVENSDALE ROAD GENERAL PROFILE SAW MILL RIVER PARKWAY	DRAWING NO. PRO-4
STATE PARKWAY - HAWTHORNE S.H. 9485					SHEET NO.
VILLAGE: HASTINGS ON HUDSON, TOWN: GREENBURGH					
COUNTY: WESTCHESTER	REGION: 8				
IT IS A VIOLATION OF LAW FOR ANY PERSON, UNLESS THEY ARE ACTING UNDER THE DIRECTION OF A LICENSED PROFESSIONAL ENGINEER, ARCHITECT, LANDSCAPE ARCHITECT, OR LAND SURVEYOR, TO ALTER AN ITEM IN ANY WAY, IF AN ITEM BEARING THE STAMP OF A LICENSED PROFESSIONAL IS ALTERED, THE ALTERING ENGINEER, ARCHITECT, LANDSCAPE ARCHITECT, OR LAND SURVEYOR SHALL STAMP THE DOCUMENT AND INCLUDE THE NOTATION "ALTERED BY" FOLLOWED BY THEIR SIGNATURE, THE DATE OF SUCH ALTERATION, AND A SPECIFIC DESCRIPTION OF THE ALTERATION.				LOCHNER <small>NEW YORK STATE OF OPPORTUNITY</small>	Department of Transportation