

NEW YORK STATE DEPARTMENT OF ENVIRONMENTAL CONSERVATION  
HUDSON RIVER ESTUARY PROGRAM TREES FOR TRIBS

**Draft Proposal for Trees for Tribs Planting  
Farragut Parkway – Saw Mill River Tributary**

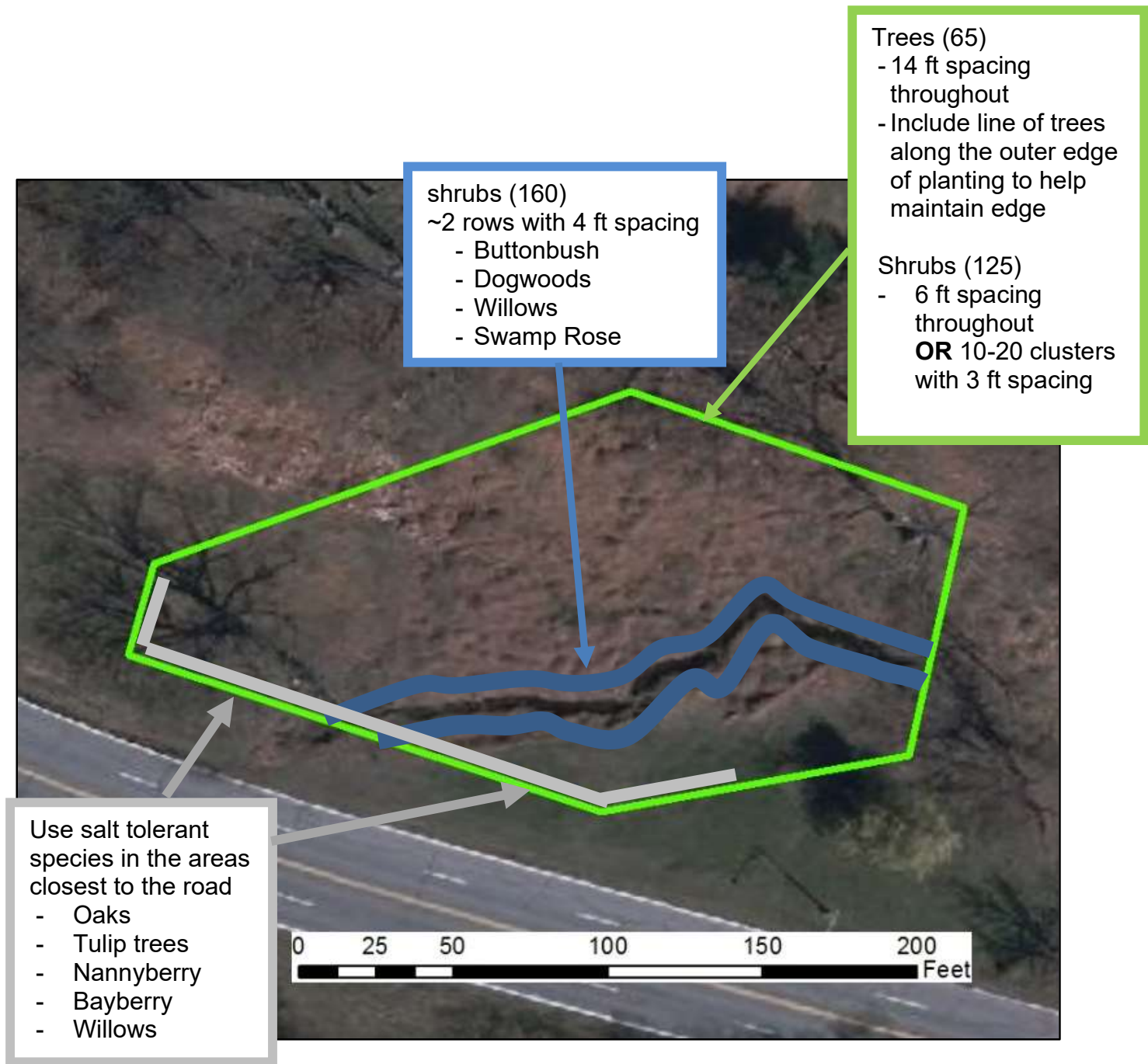


**Approximate Planting Location**

**Event Details:**

- **Date:** May 15, 2021
- **Estimated number of volunteer hours for planting:** 100
- **Planting prep:** Clear or cut invasive plants out of planting area

# Trees for Tribes – Planting Proposal



## Planting Area Description

160 ft section of the tributary stream that runs along Farragut Parkway to the Saw Mill River.

- **Planting Area:**
  - **Sun Exposure:** Full Sun, Partial shade
  - **Wetness:** Moist to flooded
- **Approximate Length along waterbody:** 160 ft
- **Width:** 35ft – 75ft (on each side of the stream)
- **Approximate Area:** 17,000 sq ft

## Planting Proposal Summary:

- **Total plants:** 350
  - **Trees:** 65
  - **Shrubs:** 285

## Proposed plant lists:

The following are the plants that are tentatively reserved for this site. Please let us know if you would like to see changes.

### TREES (65)

- 8 Red Maple (*Acer rubrum*)
- 5 Silver Maple (*Acer saccharinum*)\*
- 12 River Birch (*Betula nigra*)
- 5 Ironwood/Blue beech (*Carpinus caroliniana*)
- 4 Black Walnut (*Juglans nigra*)
- 2 Tulip Tree (*Liriodendron tulipifera*)\*
- 4 Sycamore (*Platanus occidentalis*)
- 8 Swamp White Oak (*Quercus bicolor*)\*
- 6 Red Oak (*Quercus rubra*)\*
- 5 Black Willow (*Salix nigra*)\*
- 4 Basswood (*Tilia americana*)

### SHRUBS (285)

- 10 Buttonbush (*Cephalanthus occidentalis*)\*
- 20 Silky Dogwood (*Cornus amomum*)
- 20 Gray Dogwood (*Cornus racemosa*)
- 25 Red-Osier Dogwood (*Cornus sericea*)
- 5 Hazelnut (*Corylus americana*)
- 5 Witchhazel (*Hamamelis virginiana*)\*
- 10 Winterberry (*Ilex verticillata*)
- 15 Northern Bayberry (*Myrica pensylvanica*)\*
- 25 Ninebark (*Physocarpus opulifolius*)
- 5 Staghorn sumac (*Rhus typhia*)\*
- 10 Winged Sumac (*Rhus copallinum*)\*
- 25 Swamp Rose (*Rosa palustris*)\*
- 15 Virginia Rose (*Rosa virginiana*)\*
- 25 Pussy Willow (*Salix discolor*)\*
- 25 Prairie Willow (*Salix humilis*)\*
- 25 Sandbar Willow (*Salix interior*)\*
- 20 Nannyberry (*Viburnum lentago*)\*

\*salt tolerant

## Materials:

### Plant protection:

- We can provide tree tubes, with stakes for all trees and shrubs
- We can provide weed mats, with staples for installation for all plants

Refer to planting guide for more details on planting and installation:

[http://www.dec.ny.gov/docs/lands\\_forests\\_pdf/tftpguide.pdf](http://www.dec.ny.gov/docs/lands_forests_pdf/tftpguide.pdf)

## Regular Maintenance After Planting

Maintenance of your Trees for Tribes is essential to assure the long-term success of your plants and the overall strength of your new stream buffer. Plan on spending time each month of the first few years caring for your new trees and shrubs to ensure their successful establishment.

Please see our Maintenance Guide and Calendar for step-by-step instructions.

- Maintenance Guide: [www.dec.ny.gov/docs/remediation\\_hudson\\_pdf/hrewcare16.pdf](http://www.dec.ny.gov/docs/remediation_hudson_pdf/hrewcare16.pdf)
- Maintenance Calendar: [www.dec.ny.gov/docs/lands\\_forests\\_pdf/tftcalchecklist.pdf](http://www.dec.ny.gov/docs/lands_forests_pdf/tftcalchecklist.pdf)
- Invasive Management We recommend that you watch for invasive plants and control them, at least to the extent that they interfere with the growth of your new native seedlings. [http://lhprism.org/system/files/documents/Hudsonia%20BMPs\\_Invasive%20Plants%20with%20Appendix\\_0.pdf](http://lhprism.org/system/files/documents/Hudsonia%20BMPs_Invasive%20Plants%20with%20Appendix_0.pdf)

## Post Planting/ Maintenance Contact

Name: Haven Colgate

E-mail: [haven.colgate@gmail.com](mailto:haven.colgate@gmail.com)

## Trees for Tribes Contact

Beth Roessler, Stream Buffer Coordinator

Hudson River Estuary Program

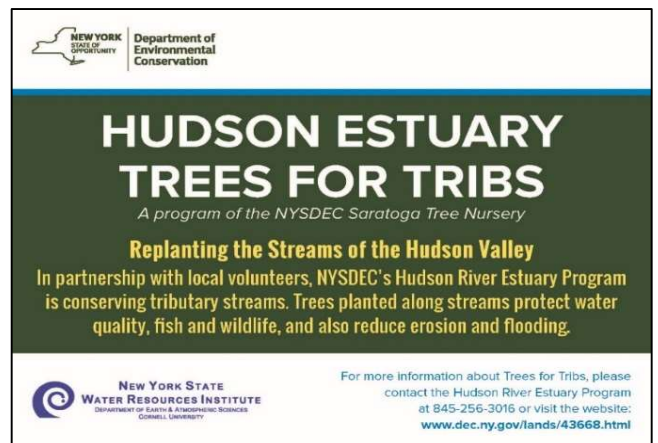
NYS DEC

21 South Putt Corners Rd.

New Paltz, NY 12561

Phone: (845) 256-2253

Email: [HudsonEstuaryTFT@dec.ny.gov](mailto:HudsonEstuaryTFT@dec.ny.gov)



*Trees for Tribes sign (actual size is 9in x 12in)*