

EARLY LEARNING CAMP
2024
PARENT GUIDE
TO A FUN
AND EXCITING
SUMMER



Summer

GENERAL INFORMATION

DESCRIPTION:

The Early Learning Camp is open to children entering Kindergarten in September. The program is packed with Creative Activities, Story Time, Arts and Crafts, and other Special Events that are designed to be fun and engaging. Early Learning encourages campers to explore new things. However, if your camper does not wish to participate in an activity, the staff will encourage participation but not force a camper to do anything they are uncomfortable with. Our small group setting allows campers to feel safe in a nurturing environment and feel comfortable enough to foster new friendships with the campers in their group. The Early Learning Camp is located at Hillside school

ARRIVAL AND DEPARTURE PROCEDURES:

Early Learning camp drop-off occurs at Hillside School New Cafeteria at 9:00 am. Signs will be posted on the first day to direct you and your camper. A formal camp arrival and departure procedure must be followed to ensure the camper's safety for all Early Learners. Please share this information with those who drop off and pick up your child (ren). Pick-up will take place between 12:45 pm-1:00 pm. Please be on TIME when picking up your child. Please complete the Dismissal form to ensure your child leaves camp safely. This allows the camp staff to know who has permission to pick up your child. Whenever your child leaves camp differently than initially stated, a **WRITTEN** note must be presented to your campers Director.

CAMP GROUP:

Camp groups will be determined before the start of camp. There will be six small groups of about 12 campers per group. There will be at least two counselors per group (at least one adult). You will be directed to your child's group on the first day. One of the primary goals of our camp is for your child (ren) to foster new friendships, which we believe is a crucial part of their early learning experience.

CAMPER PROBLEMS:

If your child has difficulty with something involving camp, please feel free to contact the Camp Director or Lisa O'Reilly. All information will be kept strictly confidential.

CLOTHING:

Campers should dress comfortably for each day of camp—shorts, t-shirts, and water shoes or sandals. Please send your child in their bathing suit; they will have the opportunity to play in the sprinkler each day. Water shoes must be worn; this will prevent injury during sprinkler fun. Please label ALL items coming to camp with your child's name to reduce the number of lost items.

EMERGENCY PROCEDURES:

Our camps are staffed with several certified Red Cross First Aid. In the event of a severe accident, the Hastings Police Department will be contacted. The Police will respond with the Hastings Ambulance Corps, if medical attention is required, the camper's parents will be called, and the camper will be transported to the hospital.

ILLNESS:

If your child becomes ill during camp hours, the parent(s) will be notified. If the parent cannot be reached, the emergency contact will be contacted. If your child is not attending on a day, it is NOT necessary to call the camp. However, please **notify** the camp in the following situation:

Your child is going to be out of camp for an extended period. (More than two days)

If your child is diagnosed with Lice, the camp policy is that the child must stay out of camp until there are no nits. The camp has a NO NIT policy. The Medical Director will determine re-entry into camp.

ATTENDANCE PROCEDURES:

For the safety of all campers, attendance will be taken at the beginning, middle, and end of each camp day. Periodic checks will also be taken throughout the day.

EARLY DISMISSAL:

If your child needs to be dismissed from camp early, a signed note from the parent/guardian must be brought to your child's head counselor. The note should include your child's name (first & last), group number & what time they will be leaving. The parent or guardian **MUST** sign out the child.

LOST AND FOUND:

The Lost & Found box is in the Day Camp Office. If your child has misplaced something, please stop in the office and check the box. To avoid lost articles, please LABEL EVERYTHING that your child brings to camp. If an item is found, the item will be held aside for your child.



DAILY SCHEDULE

The following is a typical day at the Early Learning Camp. Please be aware that it is subject to change at the discretion of the Camp Director.

9:00 am -		Arrival
9:00 am	10:00 am	Indoor/outdoor play
10:00am-	10:15am	Snack time
10:15 am	11:15 am	Inside Arts & Crafts or the Camp Theme Day Activity
11:15 am -	11:30a	Clean-up
11:30 am -	NOON	lunch
12:00 pm	12:45 pm	Outdoor play
12:45 pm	1:00 pm	Dismissal



EARLY LEARNINGS POOL DAY IS EVERY WEDNESDAY



Campers should be dropped off at Chemka Pool
Pool Staff and Camp Staff will be there to greet them
If it rains on Wednesday camp will take place at the
The Hillside School



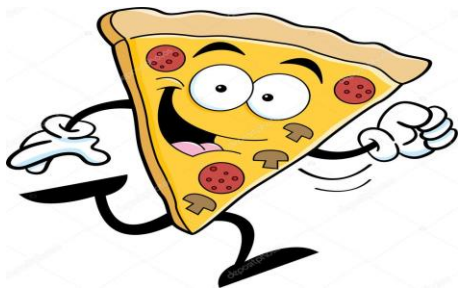
SNACK AND LUNCH:

Each day at camp, your child will have snack time, so pack a snack and a drink. Make sure the snack is labeled with your child's name. Early Learning campers will also eat lunch at the camp. Each camper must bring lunch marked with their name and group. Refrigerators are NOT available to keep lunches cool. Please do not pack things that will spoil (ex. Mayonnaise)

Some suggestions for keeping lunches cool are as follows:

Freeze or refrigerate lunch the night before

Freeze the drink, which will act as a cooler.



Pizza Fridays

The cost is \$5.00 per camper for each Friday (No coins or checks please!!)

This includes 1 slice of pizza and a drink.

If your child DOES NOT want pizza or would like more to eat, please.

Be sure to send them with lunch.



EARLY RISER PROGRAM

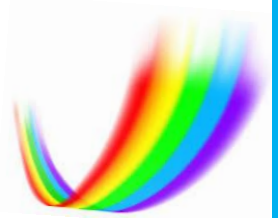
Monday, July 1, 2024, thru Friday, August 2, 2023

If your child is registered for the **EARLY RISER PROGRAM** Staff, we welcome them starting at 7:30 am. This program is designed to help working parents who need additional childcare. Before the 9:00 am camp day, Activities will include arts & crafts, sports & games.



YOUNG EXPLORES

AFTER CAMP PROGRAM



If your child is registered for the **Young Explorers After Camp Program**. Campers will stay with the Early Learning camp staff at the end of the camp day. They will then enjoy an extended day of camp Activities will include arts & crafts, games, and swimming.

Pick-up will take place at 3 p.m.

Early Learning Campers

Monday, July 1, 2024 through Friday, August 2, 2024

If you have any questions, please get in touch with Lisa O'Reilly at 478-2380, Ext 642, or via e-mail at loreilly@Hastingsgov.org



Early Learning Camp 2024

Some important reminders:

- *Early Learning camp Hastings Hillside School
 - *Drop off is at 9:00 am
 - *Pick-up is between 12:45-1:00
 - *If you come to camp late or you are picking up a camper early, please be sure to check in at the camp office
 - *Please be sure to apply sunscreen before coming to camp
 - *Campers should wear water shoes or sandals to camp!
 - *Campers should bring a
**BATHING SUIT, TOWEL, SNACK, AND LUNCH
A WATER BOTTLE AND SUNSCREEN DAILY!**
 - *Pizza Friday is \$5 each week! (For one slice and one bottle of water)
- If you have any questions, please feel free to contact me at the Recreation Department at (914) 478-2380 or via e-mail at loreilly@hastingsgov.org