



EARLY LEARNING CAMP 2020

PARENT GUIDE INFORMATION GUIDE TO A FUN AND EXCITING

Summer

GENERAL INFORMATION

DESCRIPTION:

The Early Learning Camp is open to children who will be entering Kindergarten in September. The program includes Creative Activities, Story Time, Arts and Crafts, and various other Special Events. Early Learning encourages campers to explore new things. However, if your camper does not wish to participate in an activity, the staff will encourage participation, but not force a camper to do anything they are uncomfortable with. Our small group setting allows for campers to feel safe in a nurturing environment and allows them to feel comfortable enough to foster new friendships with the campers in their group. The Early Learning Camp is located at Hastings High School Green Gym

ARRIVAL AND DEPARTURE PROCEDURES:

Early Learning camp drop off takes place between 9:00am. Signs will be posted the first day to direct you and your camper to the gym. To ensure the safety of your camper, a formal camp arrival and departure procedure must be followed. Early Learners **MUST** be accompanied to the gym. Please share this information with those who drop off and pick up your child (ren). Pick up will take place between 12:45pm - 1:00pm. Please be on **TIME** when picking up your child. To ensure that your child leaves camp safely, please fill out the Dismissal form. This allows the camp staff to know who has permission to pick up your child. Whenever your child is leaving camp in a different fashion than originally stated, a **WRITTEN** note must be presented to your campers Director.

CAMP GROUP:

Camp groups will be determined prior to the start of camp. There will be 6 small groups of about 12 campers per group. There will be at least 2 counselors per group, (at least one being an adult). The first day you will be directed to your child's group. One of our goals of camps is for your child (ren) to foster new friendships.

CAMPER PROBLEMS:

If your child is having difficulty with something involving camp, please feel free to contact the Camp Director or Lisa O'Reilly. All information will be kept strictly confidential.

CLOTHING:

Campers should dress comfortable for each day of camp. Shorts, t-shirts, and water shoes or sandals. Send your child in their bathing suit; they will have the opportunity to play in the sprinkler each day. Water shoes must be worn; this will prevent injury during sprinkler fun. To reduce the number of lost items, please label ALL items coming to camp with your child's name.

EMERGENCY PROCEDURES:

Our camps are staffed with several certified Red Cross First Aid. In the event of a serious accident, the Hastings Police Department will be contacted. The Police will respond with the Hastings Ambulance Corps, if medical attention is required, the camper's parents will be called, and the camper will be transported to the hospital.

ILLNESS:

In case your child becomes ill during camp hours, the parent(s) will be notified. If the parent cannot be reached the emergency contact will be contacted. If your child is not attending on a day, it is NOT necessary to call the camp. However, please **notify** the camp in the following situation:

Your child is going to be out of camp for an extended period. (More than two days)

If your child is diagnosed with Lice, camp policy is that the child must stay out of camp until there are no nits. The camp has a NO NIT policy. The Medical Director will determine re-entry into camp.

ATTENDANCE PROCEDURES:

For the safety of all campers, attendance will be taken at the beginning, middle and end of each camp day. Periodic checks will also be taken throughout the day.

EARLY DISMISSAL:

If your child needs to be dismissed from camp early, a signed note from the parent/guardian must be brought to your child's head counselor. The note should include your child's name (first & last), group number & what time they will be leaving. The parent or guardian **MUST** sign out the child.

LOST AND FOUND:

The Lost & Found box is in the Day Camp Office. If your child has misplaced something, please stop in the office and check the box. To avoid lost articles, please **LABEL EVERYTHING** that your child brings to camp. If an item is found, the item will be held aside for your child.

The Recreation Department believes that every resident should have the opportunity to benefit from our programs. Financial assistance is available to qualifying individuals for more information please contact the Superintendent Aaron Podhurst via e-mail apodhurst@hastingsgov.org or 914-478-2380 Ext 640



DAILY SCHEDULE

The following is a typical day at the
Early Learning Camp. Please be aware that it is subject to
change under the discretion of the Camp Director

8:45am -	9:00am	Arrival
9:00am -	10:00am	Indoor/outdoor play
10:00am-	10:15am	Snack time
10:15am-	11:15am	Inside Arts & Crafts or the Camp Theme Day Activity
11:15am -	11:30am	Clean-up
11:30am -	noon	lunch
NOON	12:45pm	Outdoor play
12:45pm -	1:00pm	Dismissal



EARLY LEARNINGS POOL DAY IS EVERY WEDNESDAY



Campers should be dropped off at Chemka Pool
Pool Staff and Camp Staff will be there to greet them
If it rains on Wednesday camp will take place at the
The High School

SNACK AND LUNCH:

Each day at camp your child will have snack time, so pack a snack
and a drink. Make sure the snack is labeled with your child's
name. Early Learning campers will also eat lunch at camp. Each
camper must bring lunch, labeled with his or her name and group.
Refrigerators are NOT available to keep lunches cool. Please do
not pack things that will spoil (ex. Mayonnaise)

Some suggestions for keeping lunches cool are as follows:

Freeze or refrigerate lunch the night before
Freeze the drink, which will act as cooler





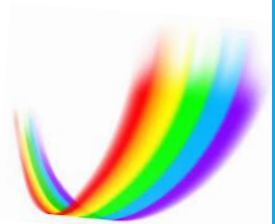
EARLY RISER PROGRAM

Monday June 29 thru Friday July 31, 2020

If your child is registered for the **EARLY RISER PROGRAM** Staff we welcome them starting 7:30 am This program is designed to help working parents who need additional childcare Prior to the 9:00 am camp day Activities will include arts & crafts, sports & games



YOUNG EXPLORES



If your child is registered for the **Young Explores Program**. Campers will stay with the Early Learning camp staff at the end of the camp day. They will then enjoy, and extended day of camp Activities will include arts & crafts, games, and swimming.

Pick-up will take place 3:00 Green Gym
1 p.m.-3 p.m.

Early Learning Campers

Monday, June 29th through Friday, July 31st

If you have any questions, please contact Lisa O'Reilly at
478-2380, Ext 642 or via e-mail loreilly@Hastingsgov.org



Early Learning Camp 2020

Some important reminders:

- *Early Learning camp Hastings High School Green Gym
 - *Drop off is at 9:00am Gym
 - *Pick up is between 12:45-1:00 Gym
 - *If you come to camp late or you are picking up a camper early, please be sure to check in at the camp office
 - *Please be sure to apply sunscreen before coming to camp
 - *Campers should wear water shoes or sandals to camp!
 - *Campers should bring a
**BATHING SUIT, TOWEL, SNACK AND LUNCH
A WATER BOTTLE AND SUNSCREEN DAILY!**
 - *Pizza Friday is \$3 each week! (For 1 slice and 1 bottle of water)
- If you have any questions, please feel free to contact me at the Recreation Department at (914) 478-2380 or via e-mail at loreilly@hastingsgov.org