

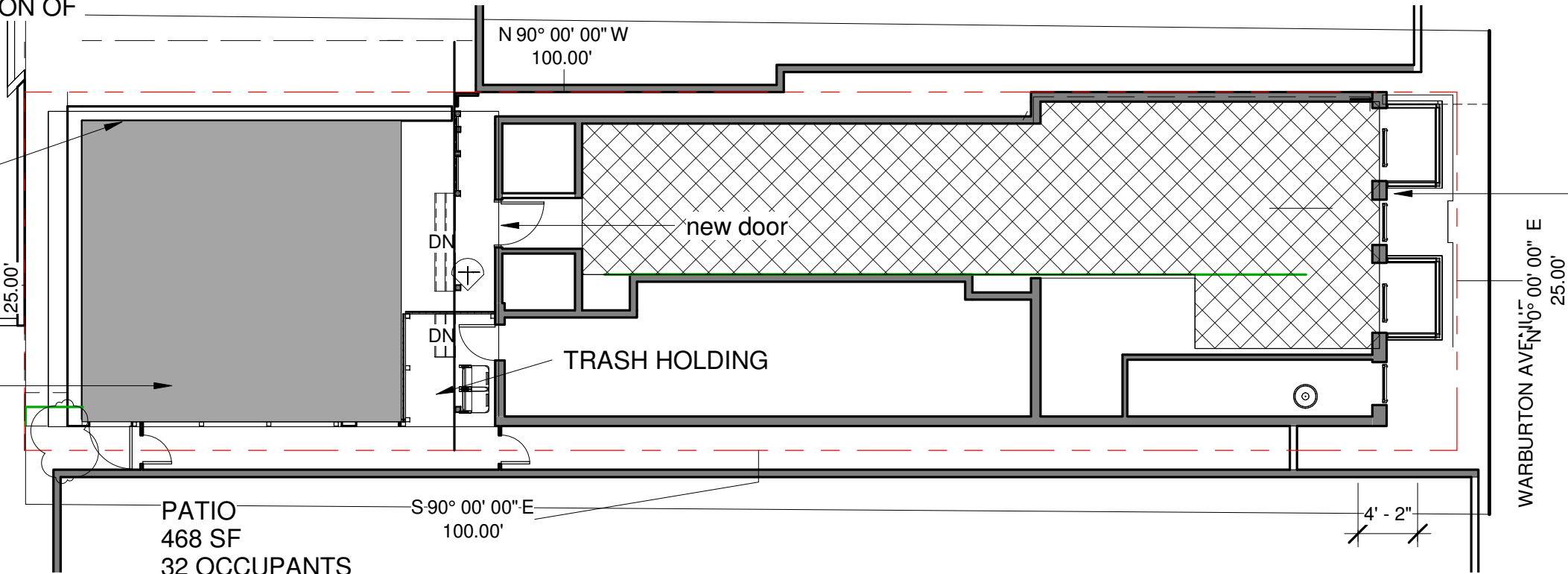
NOTES

- 1. WALLS AND FENCE ARE 6'-6" TALL
- 2. ALL REAR LIGHTS ARE DARK SKY CERTIFIED. FRONT LIGHTS ARE IN SHELTERED PLACES
- 3. SEE ELEVATIONS FOR LOCATION OF LIGHTS

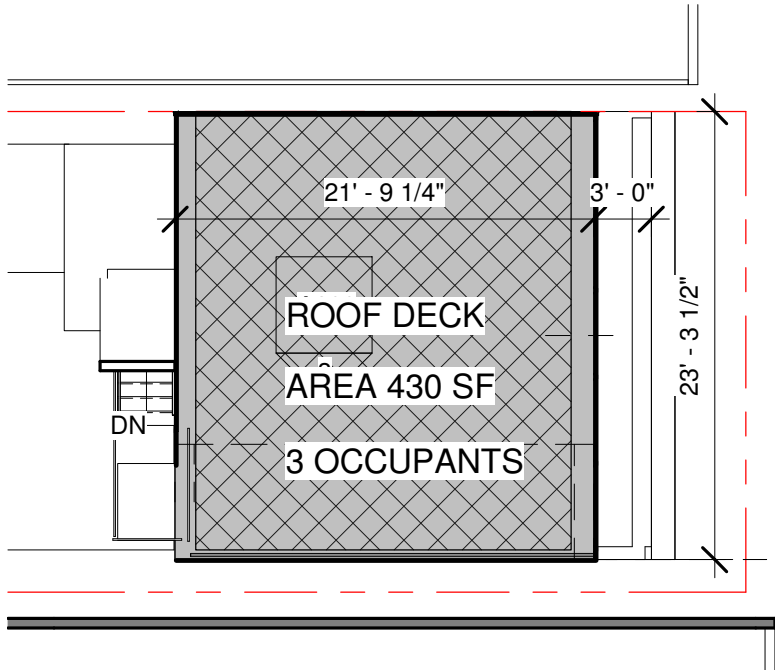
WALL MTD LIGHTS

10 FT LIGHT POLES WITH STRING LIGHTS

3 PATIO
1" = 10'-0"

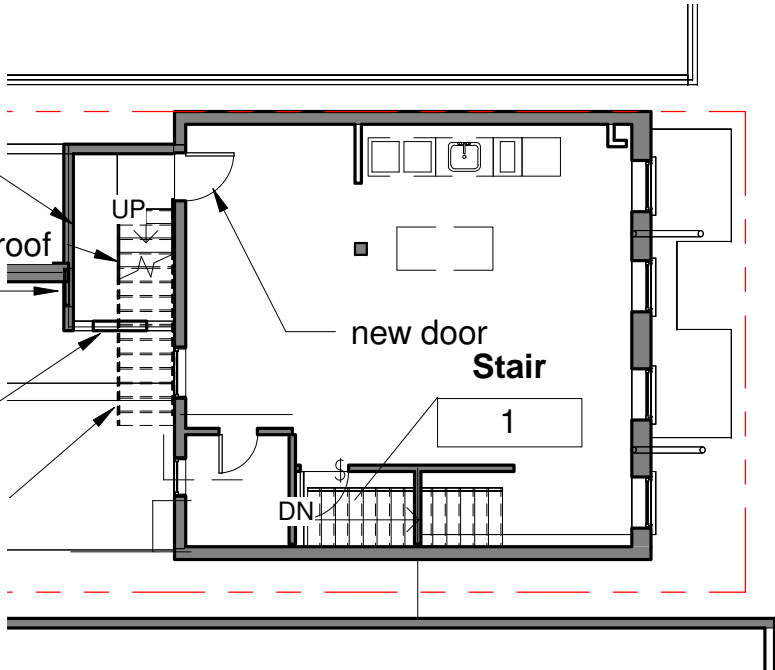


2 ROOF DECK
1" = 10'-0"



exist light well
new steel stair to roof
new window
remove window and part of exist wall
new stair weather covering

1 Second Floor - New Copy 1
1" = 10'-0"



1 A202

No.	Description	Date
2	PB/ZBA/ARB	6/14/21
3	PB REVISIONS	8/19/21
4	ARB REVISIONS	8/30/21

Trio Architecture pllc
Hastings on Hudson, NY
914.907.2511

Dan Sbrega

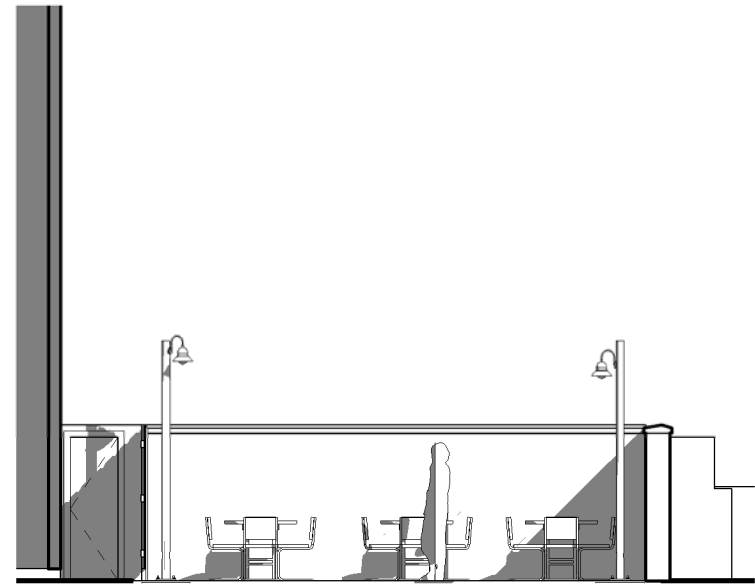
Patio Roof Deck

583 Warburton Ave
Hastings on Hudson, ny 10706

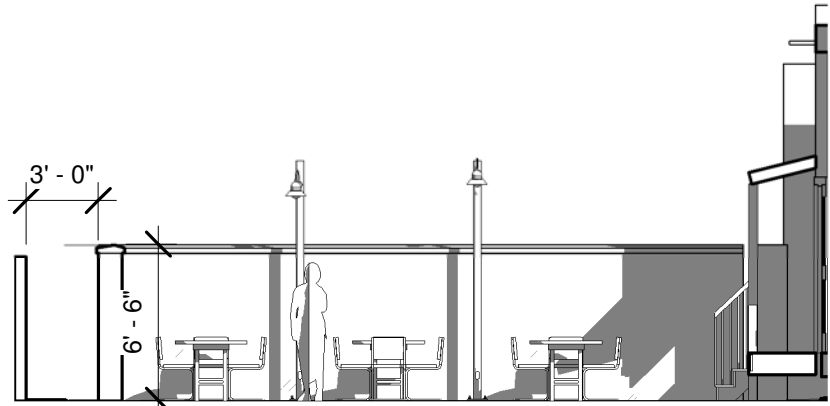
plans

Date 06/10/21
Scale 1" = 10'-0"

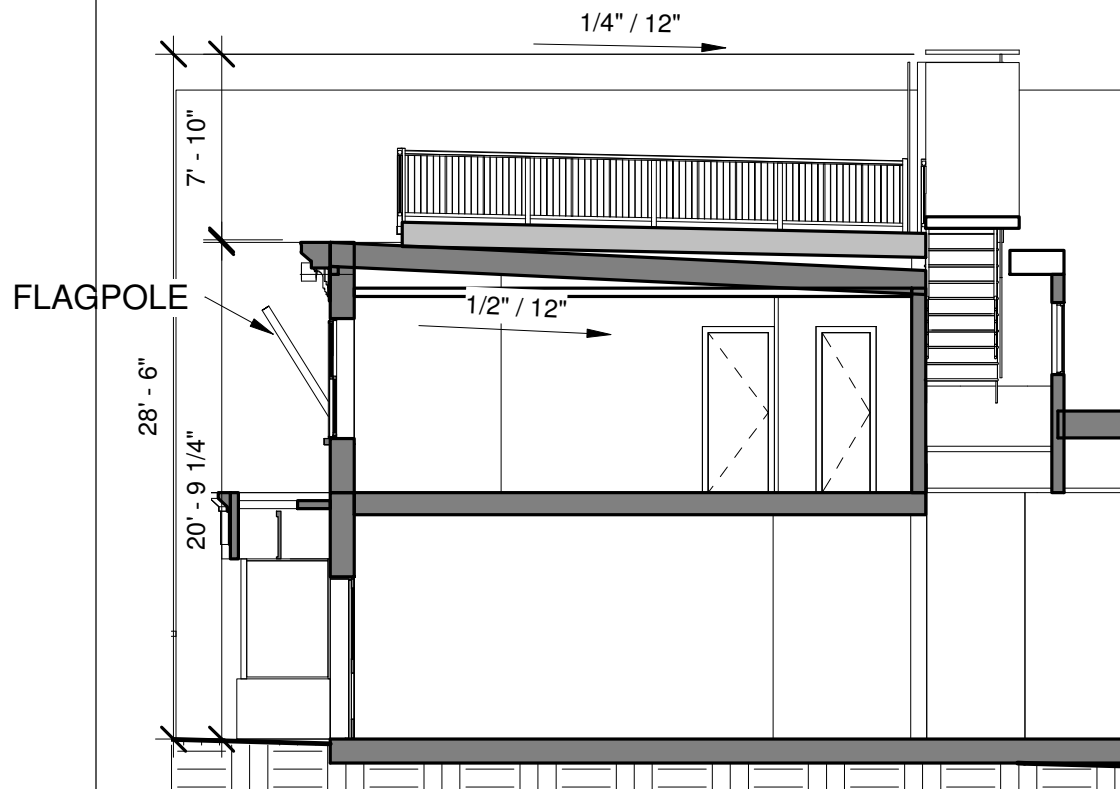
A100



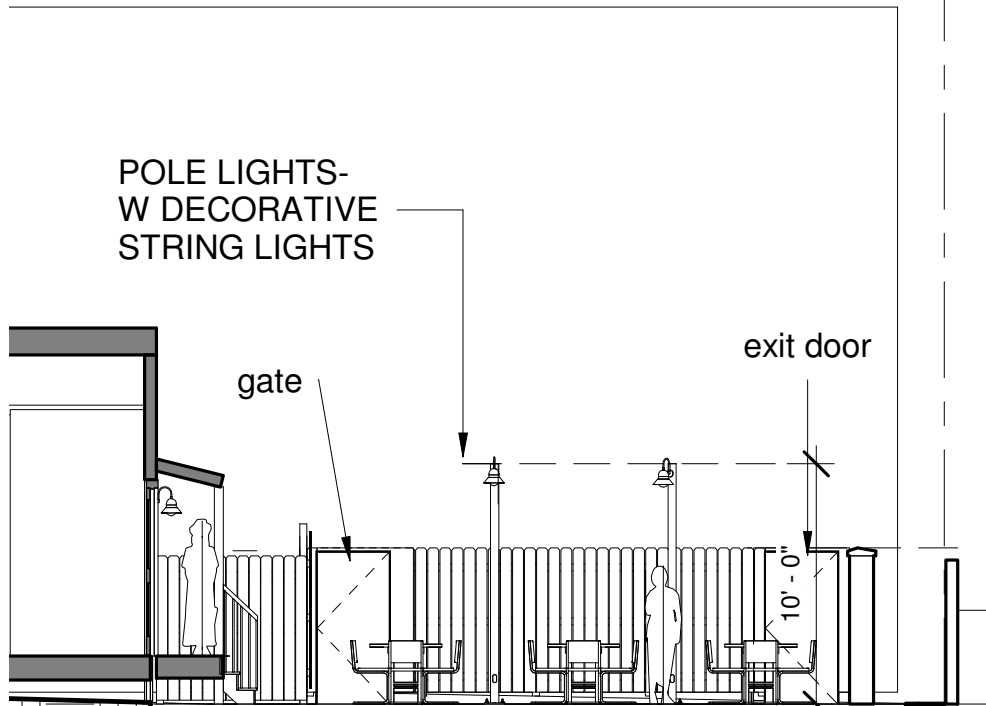
1 rear patio
1/8" = 1'-0"



2 side patio
1/8" = 1'-0"



3 section thru bldg & site
1/8" = 1'-0"



4 rear of bldg
1/8" = 1'-0"

No.	Description	Date
2	PB/ZBA/ARB	6/14/21
3	PB REVISIONS	8/19/21
4	ARB REVISIONS	8/30/21

Trio Architecture pllc
Hastings on Hudson, NY
914.907.2511

Dan Sbrega

Patio Roof Deck

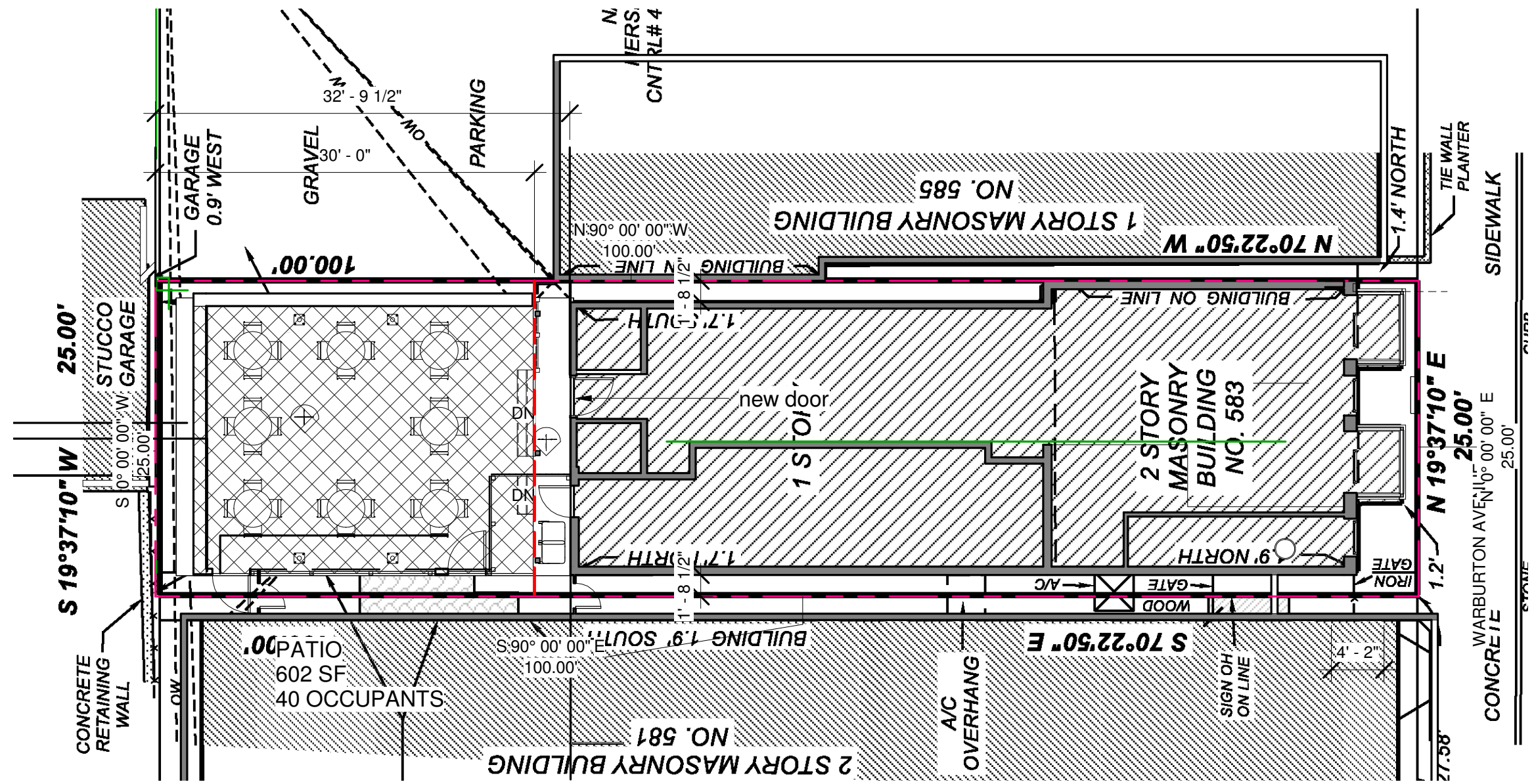
583 Warburton Ave
Hastings on Hudson, ny 10706

elevations & sections

Date 06/10/21

Scale 1/8" = 1'-0"

A200



No.	Description	Date
4	ARB REVISIONS	8/30/21

Trio Architecture pllc
Hastings on Hudson, NY
914.907.2511

Dan Sbrega

Patio Roof Deck

583 Warburton Ave
Hastings on Hudson, ny 10706

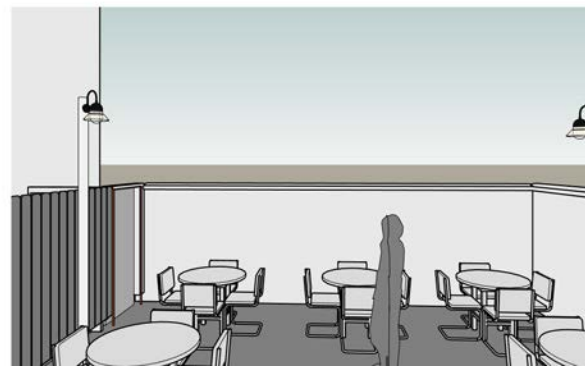
Survey

Date 06/18/21
Scale 1" = 10'-0"

A201



1 Warburton Elevation
1/8" = 1'-0"



No.	Description	Date
2	PB/ZBA/ARB	6/14/21
3	PB REVISIONS	8/19/21
4	ARB REVISIONS	8/30/21

583 Warburton Ave
Hastings on Hudson,
ny 10706

Trio Architecture pllc
Hastings on Hudson, NY
914.907.2511

Patio Roof Deck

Dan Sbrega

Front

Date _____ Issue Date _____
Scale 1/8" = 1'-0"

A202

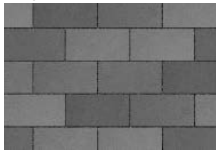
ECO-PRIORA™ GREENBURGH, NEW YORK

Architectural design with engineered performance.

Available in multiple shapes, this permeable paver is also produced using face-mix technology that will increase the durability of the product and provide better color retention. Custom colors and finishes are available to offer unlimited design possibilities. Combined with a surface infiltration rate of up to 140 inches per hour, Eco-Priora offers both aesthetics and performance.



OPAL



STEEL GREY BLEND

Special Order Colors



BEECHWOOD
STANDARD FINISH
SPECIAL ORDER



GRANITE
CLASSIC FINISH



GRANITE BLEND
SMOOTH ENDURACOLOR
FINISH



NATURAL
STANDARD FINISH
SPECIAL ORDER



RIVER
STANDARD FINISH



SABLE BLEND
SMOOTH ENDURACOLOR
FINISH



SIERRA
CLASSIC FINISH

Minimum quantities and special pricing may apply. Contact us for more details.



With so many different options for customization we ask that you contact your local Unilock Representative for more information about customizing this product.

Minimum quantities will apply.



RECTANGLE
24 CM X 12 CM X 8 CM
9.5" X 4.75" X 3.125"



LARGE SQUARE
24 CM X 24 CM X 8 CM
9.5" X 9.5" X 3.125"
SPECIAL ORDER



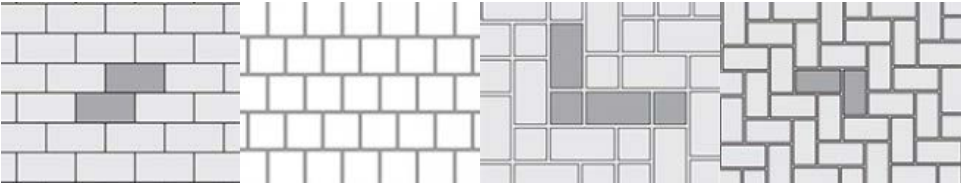
SQUARE
12 CM X 12 CM X 8 CM
4.75" X 4.75" X 3.125"
SPECIAL ORDER -
PREMIUMS MAY APPLY

Eco-Priora can be manufactured in a herringbone pattern for mechanical installation. This is only available by special order, please contact your representative for details. Installation rates up to 12,000 sq.ft. per machine per day have been documented. This makes Eco-Priora a very competitive permeable pavement that can be

installed even in adverse weather conditions.

	Unit	SqFt Per			Per Bundle	Soldier LnFt Per		Sailor LnFt Per		Units Per		Lbs Per	
Stones & Bundling	Thickness	Bundle	Layer	Stone	Layers	SqFt	Bundle	SqFt	Bundle	SqFt	Bundle	Layers	Bundle
Rectangle	3-1/8" (8cm)	75.95	10.85	0.3	7	0.77	96.5	0.39	192.9	3.29	245	381	2669

Notes: **Special Order - lead time required, minimum quantities apply.** Sold in full bundles only and is shipped on a refundable skid. Eco-Priora™ can be manufactured in a variety of custom colors and textures. Availability may vary by region. Contact your Unilock representative for more information. **Important:** Textured surfaces require a buffer between the plate compactor and the paver surface to prevent scuffing. Specially graded aggregates must be used for the joints. Contact Unilock for information. All measurements are nominal.



Eco-Priora Pattern A
5x10 (100%)

Eco-Priora Pattern B
10x10 (100%)

Eco-Priora Pattern D
5x5 (33%)
5x10 (67%)

Eco-Priora Pattern E
5x10 (100%)

Lunch n' Learn Seminars

Sample Request

Info Request

Item #	UPC Code:
8106-A138-L	747396087221
Product Family Name:	Finish:
Kirkham [™]	Aspen Bronze [™]
Category:	Category Type:
POST MOUNT LANTERN	Post Light
Certification	
3057374	
Patents:	
Notes:	



Image File Name: 8106-A138-L.jpg



MEASUREMENTS

Width:	Length:	Height:	Extension:
8.5		11	11.75
Height Adjustable:	Min Overall Height:	Max Overall Height:	Slope:
No			No
Wire Length:	Chain Length:	Safety Cable Included:	Net Weight:
7		No	1.59
Canopy Width:	Canopy Height:	Canopy Length:	Center to Bottom:
Backplate Width:	Backplate Height:	Center to Top:	

No. of Bulbs:	Light Type:			
1	L-AC10-MODULE			
Max Bulb Wattage:	Socket:			
10	LED MODULE			
Dimmable:	Ballast:	Rated Life Hours:	Photocell Included:	Bulb/LED Included:
Yes		30000	No	
Bulb/LED Included:	Color Temp.:	CRI:	Initial Lumens:	Delivered Lumens:
	2700	78	450.0	313.26



SHIPPING

Description:	Material:
	GLASS
Part No.:	Quantity:
G8101-CVR	1
Width:	Height:
	Length:

Carton Width:	Carton Height:	Carton Length:
10.5	13.0	14.0
Carton Weight:	Carton Cubic Feet:	Small Package Shippable:
3.124	1.106	Yes
Master Pack Width:	Master Pack Height:	Master Pack Length:
Master Pack Weight:	Master Cubic Feet:	Multi-Pack:
		1

LED



Dark Sky



Wet
Location



ETL
Intertek



WARNING:Handling this product can expose you to chemicals including lead, which is known to the State of California to cause cancer and birth defects or other reproductive harm. Wash hands with soap and water after installing, handling, cleaning or otherwise touching this product. For more information go to: www.P65Warnings.ca.gov.

For additional information, please contact Customer Care: 1-800-221-7977 | Product depicted on this spec sheet is protected by United States Federal and/or State laws including US Patent, Trademark and/or Copyright and unfair competition laws. Unauthorized reproduction or use carries severe legal penalties.

Item #	UPC Code:
7900-166	747396049533
Product Family Name:	Finish:
	Corona Bronze™
Category:	Category Type:
POST	
Certification	
Patents:	
Notes:	



Image File Name: 7900-166.jpg



MEASUREMENTS

Width:	Length:	Height:	Extension:
3	3	96	
Height Adjustable:	Min Overall Height:	Max Overall Height:	Slope:
No			No
Wire Length:	Chain Length:	Safety Cable Included:	Net Weight:
		No	5.78
Canopy Width:	Canopy Height:	Canopy Length:	Center to Bottom:
Backplate Width:	Backplate Height:	Center to Top:	

No. of Bulbs:	Light Type:			
0				
Max Bulb Wattage:	Socket:			
Dimmable:	Ballast:	Rated Life Hours:	Photocell Included:	Bulb/LED Included:
No			No	N
Bulb/LED Included:	Color Temp.:	CRI:	Initial Lumens:	Delivered Lumens:



SHIPPING

Description:	Material:
Part No.:	Quantity:
Width:	Height:
	Length:

Carton Width:	Carton Height:	Carton Length:	
3.75	3.75	97.5	
Carton Weight:	Carton Cubic Feet:	Small Package Shippable:	
7.66	0.793	No	
Master Pack Width:	Master Pack Height:	Master Pack Length:	
Master Pack Weight:	Master Cubic Feet:	Multi-Pack:	Master Pack:
		1	1



WARNING:Handling this product can expose you to chemicals including lead, which is known to the State of California to cause cancer and birth defects or other reproductive harm. Wash hands with soap and water after installing, handling, cleaning or otherwise touching this product. For more information go to: www.P65Warnings.ca.gov.

For additional information, please contact Customer Care: 1-800-221-7977 | Product depicted on this spec sheet is protected by United States Federal and/or State laws including US Patent, Trademark and/or Copyright and unfair competition laws. Unauthorized reproduction or use carries severe legal penalties.

LED LIFESTYLE SMALL DECORATIVE AREA LIGHTS (XDLS)



US patent 7,828,456 8,002,428, 8,177,386 8,434,893 8,567,983 and US & int'l. patents pending

SMARTTEC™ - LSI drivers feature integral sensor which reduces drive current when ambient temperatures exceed rated temperature

ENERGY SAVING CONTROL OPTION - DIM - 0-10 volt dimming enabled with controls by others. BLS - Bi-level switching responds to external line voltage signal from separate 120-277V controller or sensor (by others), with low light level decreased to 30% maximum drive current.

LEDS - Select high-brightness LEDs in Cool White (5000K), Neutral White (4000K) or Warm White (3500K) color temperature. 70 CRI CW. 80 CRI NW and WW.

DISTRIBUTION PATTERN - Types 3, FT and 5. Exceptional uniformity creates bright environment at lower light levels. Improved backlight cutoff minimizes light trespass.

CROWN - Cast aluminum. Wiring emerges from crown through compression seal fitting to prevent water entry. One-piece silicone gasket seals crown to shade for water- and dust-tight construction.

SHADES - Spun aluminum. Two shade styles available - A - Angle and B - Bell.

OPTICAL UNIT - Optical unit and aluminum door frame recessed into shade and sealed with one-piece silicone gasket. Clear tempered flat glass lens sealed with silicone gasket to door frame (includes pressure-stabilizing breather). Optical unit is tethered and provides access to driver. Door frame retaining fasteners are captive.

BRACKETS - Brackets are extruded and cast aluminum assemblies or fabrications. All decorative elements are die cast or extruded aluminum.

MOUNTING - Classic Hook (CH) and Side Arm (SA - 4" O.D. minimum pole top required) available. See Steel Round Pole and Aluminum Round Pole data sheets for pole selection information. Side Arm pole mount requires 3" reduced drilling pattern. Classic hook mount requires a 4" O.D. pole or tenon.

ELECTRICAL - Two-stage surge protection (including separate surge protection built into electronic driver) meets IEEE C62.41.2-2002, Location Category C. Available with universal voltage power supply 120-277VAC (UE - 50/60Hz input), and 347-480 VAC. Optional button-type photocells (PCI) are available in 120, 208, 240, 277 or 347 volt (supply voltage must be specified).

DRIVERS - Available in SS (Super Saver) and HO (High Output) drive currents (Drive currents are factory programmed.). Components are fully encased in potting material for moisture resistance. Driver complies with FCC standards. Driver and key electronic components can easily be accessed.

OPERATING TEMPERATURE - -40°C to +50°C (-40°F to +122°F).

FINISH - Each fixture is finished with LSI's DuraGrip polyester powder coat process. The DuraGrip finish withstands extreme weather changes without cracking or peeling.

WARRANTY - LSI LED fixtures carry a limited 5-year warranty.

PHOTOMETRICS - Please visit our web site at www.lsi-industries.com for detailed photometric data.

SHIPPING WEIGHT (IN CARTON) - 24 lbs. (10.8 kg)

LISTINGS - UL listed to U.S. and Canadian safety standards. Suitable for wet locations

LIGHT OUTPUT - XDLS					
		Lumens (Nominal)			Watts (Nominal)
		Type 3	Type FT	Type 5	
Cool White	SS	7100	6540	6220	71
	HO	9600	8990	8500	106
Neutral White	SS	6510	5840	5680	71
	HO	8810	7890	7780	106
Warm White	SS	4790	5170	5010	71
	HO	6460	6880	6740	106

LED Chips are frequently updated therefore values may increase.

This product, or selected versions of this product, meet the standards listed below. Please consult factory for your specific requirements.



Project Name _____ Fixture Type _____

Catalog # _____

9/09/19
© 2019
LSI INDUSTRIES INC.

LED LIFESTYLE SMALL DECORATIVE AREA LIGHTS (XDLS)

PRODUCT ORDERING INFORMATION

TYPICAL ORDER EXAMPLE: **XDLSB 3 LED SS CW UE BLK CH S PCI120**

Prefix	Distribution	Light Source	Drive Current	Color Temp	Input Voltage	Finish	Mounting Style ^{1,2}	Mounting Configuration ^{1,2}	Options
XDLSA ¹ Angle Shade	3 - Type III 5 - Type V FT - Forward Throw	LED	SS - Super Saver	CW - Cool White (5000K) NW - Neutral White (4000K) WW - Warm White (3500K)	UE - Universal Electronic (120-277V) 347-480 Universal Voltage (347-480V)	BLK - Black BRZ - Bronze WHT - White GPT - Graphite MSV - Metallic Silver PLP - Platinum Plus SVG - Satin Verde Green	CH - Classic Hook SA4 - Side Arm Mount for 4" O.D. Round Poles ³ SA5 - Side Arm Mount for 5" O.D. Round Poles ³	S - Single D180 - Double D90 - Double ⁴ T90 - Triple ⁴ TN120 - Triple ⁴ Q90 - Quad ⁴ W - Wall Mount (For use with CH or Side Arm Mounting Style)	DIM - 0-10 Volt Dimming (from external signal) ⁵ BLS - Bi-level Switching (from external 120-277V signal) ⁵ Button Type Photocells PCI120 - 120V PCI208-277V - 208-277V PCI347 - 347V

ACCESSORY ORDERING INFORMATION

(Accessories are field installed)

Description	Order Number	Description	Order Number
FK120 Single Fusing (120V)	FK120 ⁶	DFK480 Double Fusing (480V)	DFK480 ⁶
FK277 Single Fusing (277V)	FK277 ⁶	FK347 Single Fusing (347V)	FK347 ⁶
DFK208, 240 Double Fusing (208V, 240V)	DFK208, 240 ⁶		

FOOTNOTES:

1- When ordering a multiple configuration (D180, etc.) order one fixture/bracket configuration per pole - i.e. order one XDLSB 3 LED SS CW UE BLK CH D180 PCI120 to receive two fixtures and one CH D180 bracket (see drawing on this page). See STEEL ROUND POLES and ALUMINUM ROUND POLES data sheets for pole ordering information.

2- See Lifestyle Bracket ordering chart for Mounting Style/Configurations availability.

3- 3" reduced drilling pattern required.

4- For use with SA4 and SA5 mounting styles only.

5- DIM and BLS cannot be ordered together.

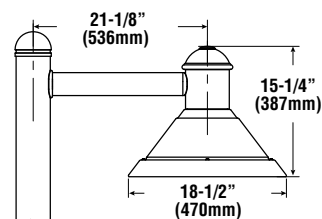
6- Fusing must be located in the hand hole of pole.

LUMINAIRE EPA CHART - XDLS

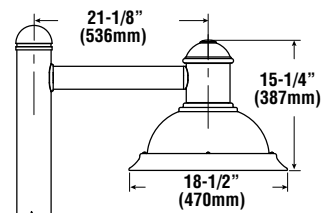
Single	
D180°	1.6
D90°	2.7
T90°	2.3
TN120°	3.3
Q90°	3.4
Q90°	4.1

Note: Includes Bracket

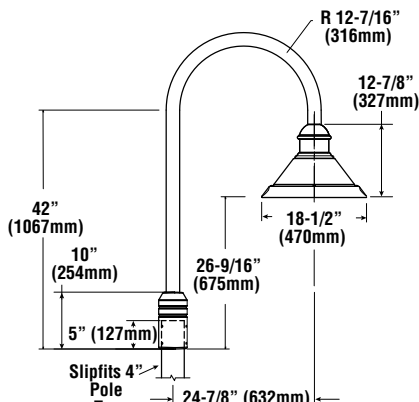
DIMENSIONS



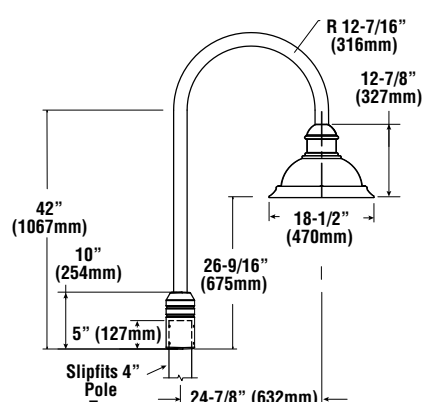
SIDE ARM (SA4 S) - ANGLE SHADE



SIDE ARM (SA4 S) - BELL SHADE



CLASSIC HOOK (CH S) - ANGLE SHADE

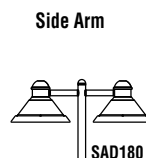


CLASSIC HOOK (CH S) - BELL SHADE

See Lifestyle Brackets and Mounts in outdoor section of latest Buyers Guide for details on other bracket sizes.



CHD180



SAD180



SAW



Project Name _____ Fixture Type _____

Catalog # _____

9/09/19

© 2019
LSI INDUSTRIES INC.



TREX® CLADDING™

A new side to Transcend.
Learn about the architects' choice in elegant, worry-free residential armor at cladding.trex.com

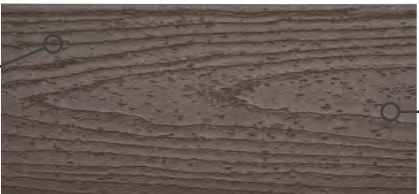
Trex Transcend®

EARTH TONES

A CLASSIC LOOK FOR
UNCOMPROMISING HOMES

Like its tropical counterpart, Trex Transcend® Earth Tones gives homeowners the freedom and confidence to design to every curve of the imagination. These premium composite boards stand apart with a monochromatic color palette as timeless as its inspiration: nature itself.

SHOWN IN VINTAGE LANTERN



A luxurious look that lasts

Consistent monochromatic color, end to end

BOARD PROFILES

SQUARE
EDGE

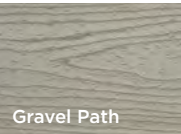


GROOVED
EDGE

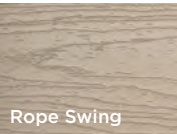


Curveable boards for endless design possibilities

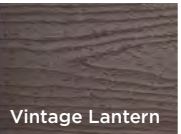
Use Trex Hideaway® Hidden Fastening System for a clean, fastener-free appearance



Gravel Path



Rope Swing



Vintage Lantern





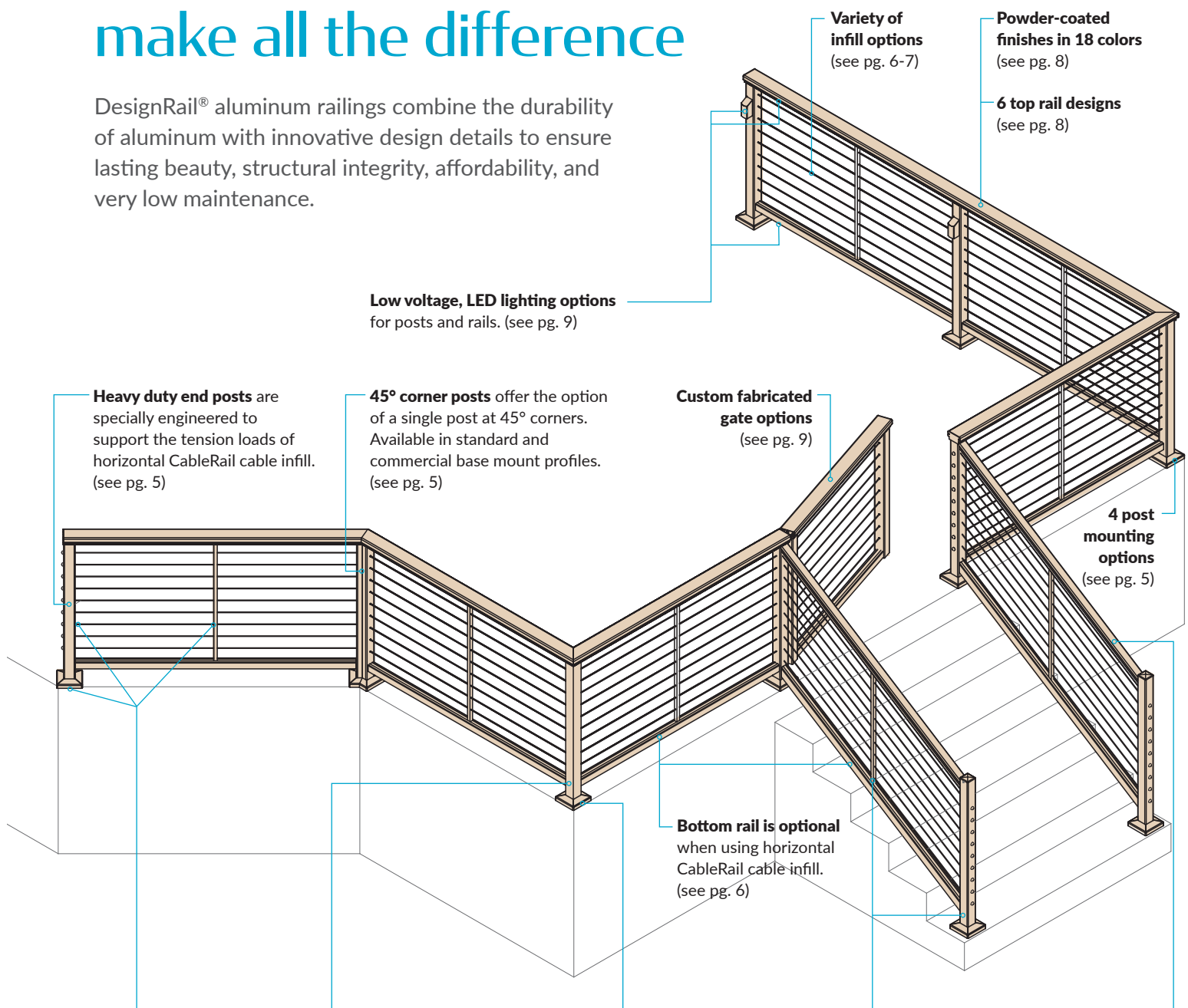
feeney® 

DesignRail®

Create Your Own Railing Systems

DesignRail® details make all the difference

DesignRail® aluminum railings combine the durability of aluminum with innovative design details to ensure lasting beauty, structural integrity, affordability, and very low maintenance.



Variety of infill options
(see pg. 6-7)

Powder-coated finishes in 18 colors
(see pg. 8)

6 top rail designs
(see pg. 8)

Low voltage, LED lighting options
for posts and rails. (see pg. 9)

Heavy duty end posts are specially engineered to support the tension loads of horizontal CableRail cable infill. (see pg. 5)

45° corner posts offer the option of a single post at 45° corners. Available in standard and commercial base mount profiles. (see pg. 5)

Custom fabricated gate options
(see pg. 9)

4 post mounting options
(see pg. 5)

Bottom rail is optional when using horizontal CableRail cable infill. (see pg. 6)



Isolation bushings and pads are available for all post, picket holes and post bases when installing railings in harsh, salt-air environments.



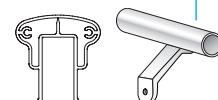
90° Single corner posts for 1/8-inch CableRail cable infill allow the cables to run continuously through a corner without terminating. One post in each corner versus two means faster installation, less cost, and a more open, beautiful view. Available in all post mounting styles, except stanchion mount. Use Curved Lacing Needle (#3221-curve) to install cables.



Base plate covers add a finished detail to base mounted posts. Powder-coated to match the railing color. (see pg. 9)



Pre-drilled, trim-to-fit stair posts and pickets for 1/8-inch CableRail cable infill save installation time and money. Available in 3 angle ranges (23°-28°, 29°-34°, 35°-39°) and all post mounting styles.



Graspable top rail or applied handrail options to meet stair railing code requirements. (see pgs. 9)

Create Your Own

DesignRail® railings are easily adaptable to any exterior, interior, commercial, or residential project. Simply choose from the style options to create your perfect railing design.

STEP

1

Select a railing height

Posts for horizontal railings come pre-cut for 36-in, 39-in and 42-in railing heights. Stair or custom posts must be cut to height in the field and extrusions can be ordered in 10-ft or 20-ft lengths for that purpose. When using horizontal cable infill, all posts, including stair posts, are available pre-drilled for the cables.



Building codes in your area may require your rails to meet a minimum height. Consult your local building codes when choosing a height for your project.

STEP

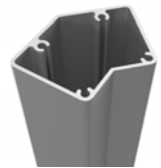
2

Select a mounting type

Posts are made from 2 $\frac{3}{8}$ -in square tube extrusions in three distinct cross-sectional profiles: Standard, Commercial Base Mount, and Heavy Duty. Each is specially engineered to provide optimal structural strength and design performance for specific usage and load conditions. Our customer service team will determine which posts are required depending on the type of project and the railing design options selected.

Our 90° single corner posts and pre-drilled stair posts and pickets will reduce installation time and save money when using horizontal CableRail cable infill (see pg.6).

POST TYPES (Determined by project type, railing usage and conditions)

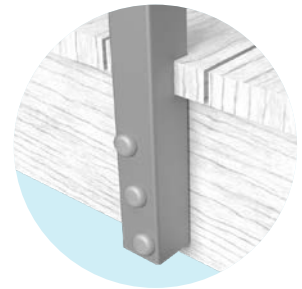
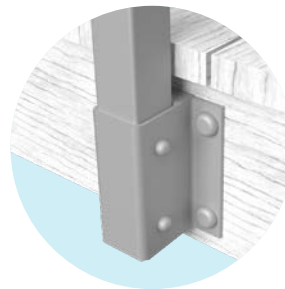
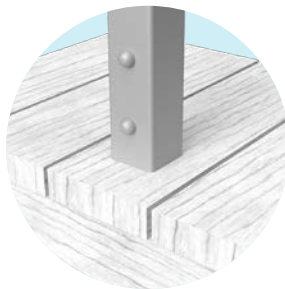
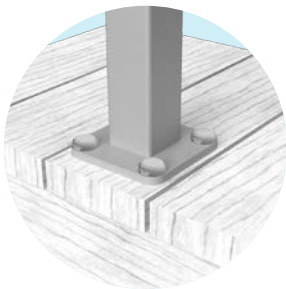


Square posts

Standard, Commercial Base Mount, and Heavy Duty profiles available.

45° posts

Standard and Commercial Base Mount profiles available.



BASE MOUNT

- For top mounting to deck, patio, floor, or stair tread surfaces
- $\frac{3}{8}$ -in thick by 5-in square base plate for square posts and $\frac{3}{8}$ -in thick with a 1 $\frac{1}{4}$ -in contour reveal for 45° posts
- Plates come pre-attached to posts
- Optional decorative base plate covers are available (see pg. 9)

STANCHION MOUNT

- For mounting with stone or tile covered concrete slabs or on roof decks where penetration of waterproof roofing membranes must be minimized
- Stanchions are attached to the structural members prior to pouring the slab or laying the roof membrane. Railing posts are then sleeved over the protruding stanchion and secured with screws
- Available in steel, aluminum or stainless steel

FASCIA BRACKET MOUNT

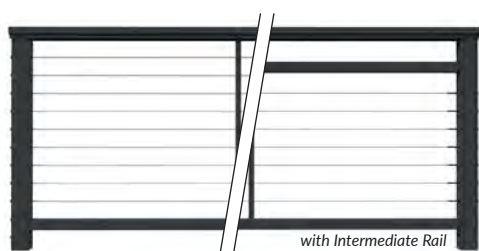
- For side mounting to fascia or rim joists when decking or nosing trim extends beyond the edge of the fascia board
- Posts are attached using metal brackets that have 1 $\frac{1}{4}$ -in standoff
- Railing may require a bottom rail when using this method

FASCIA MOUNT

- For side mounting to fascia boards, joists, or walls
- Posts come with pre-drilled bolt holes

Select an infill type

With limitless design potential, Feeney makes it easy to create a cohesive look and feel from the inside-out with multiple infill and railing solutions that complement an array of interior and exterior styles.



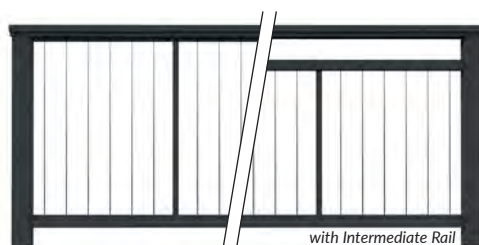
HORIZONTAL CABLES - BOTTOM RAIL

- Pre-fabricated $\frac{1}{8}$ -in diameter stainless steel CableRail Kits for easy cable installation
- A vertical intermediate picket is used mid-span to minimize cable deflection
- All posts and pickets come pre-drilled for cables



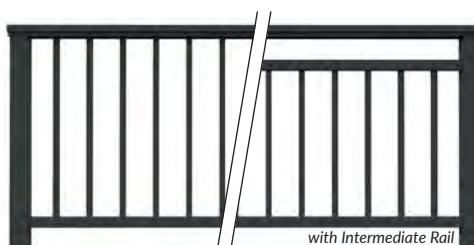
HORIZONTAL CABLES - NO BOTTOM RAIL

- Pre-fabricated $\frac{1}{8}$ -in diameter stainless steel CableRail Kits for easy cable installation
- A vertical intermediate picket is used mid-span to minimize cable deflection
- All posts and pickets come pre-drilled for cables



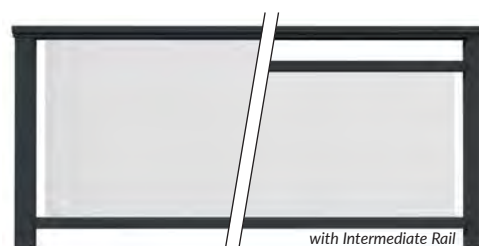
VERTICAL CABLES

- $\frac{1}{8}$ -in diameter 316-grade stainless steel cables come prefabricated to size with all of the attachment fittings, ready to install
- Two vertical intermediate pickets are spaced mid-span to maximize frame rigidity



VERTICAL PICKETS

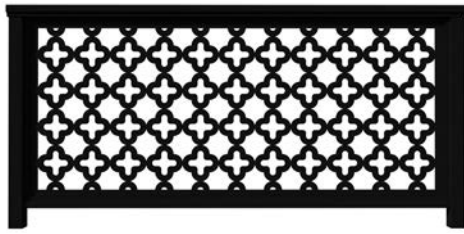
- $\frac{3}{4}$ -in square aluminum pickets powder-coated to match the frame color
- Available in pre-assembled panels that can be trimmed to length



TEMPERED GLASS

- Clear or custom tinted panels that are easily inserted into vinyl lined slots in the Top Rail and Bottom Rail
- No special mounting hardware needed
- Glass panels are pre-cut to fit the final opening measurements

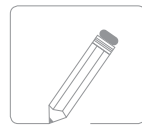




LASER CUT ALUMINUM PANELS

Eye-catching, bold patterns - Feeney offers an added level of intrigue with powder-coated laser-cut aluminum panels. Engineered with style, Feeney product designers created 9 patterns making it easy to customize your space.

- Available in ColorEASY™ powder-coated colors
- At 36-in height, max width is 6ft
- At 42-in height, max width is 5ft



DESIGN YOUR OWN



SVERRA™



CYPHER™



PISCES™



CUBIST®



BOUND™



TORRENT™



SEAGRASS™

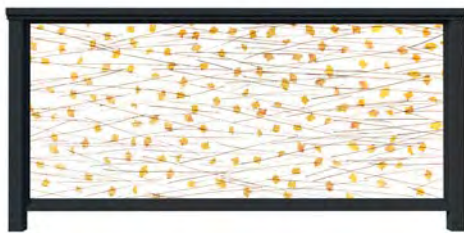


AGAMA™



TRILLIUM®

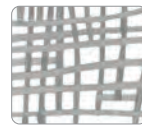
Additional Laser-Cut patterns and custom designs are available through Feeney Design Services.



RESIN PANELS

Feeney has partnered with 3Form, the leading resin provider for the Designer community, to offer nine standard panel styles with embedded organic materials. Feeney's DesignRail® AAMA 2604 Powder coated aluminum railing frame + 3Form's Resin panels is an award-winning combination of both beauty and durability.

- At 36-in and 42-in height, max width is 5ft
- Interior applications only



CONNECTION SQUARE



TING TING



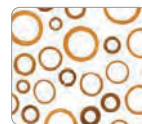
GINKO THATCH



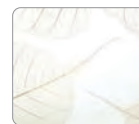
RICE GRASS



KATHALI GRAYS



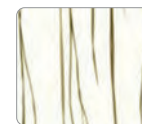
BAMBOO RINGS NATURAL



FOSSIL LEAF SPADE NATURAL



THATCH 50 PERCENT



BEAR GRASS LITE



STAINLESS STEEL MESH PANELS

Whether you are looking for a traditional welded wire or a basket press mesh, Feeney product designers crafted four stylistic mesh patterns that are made of polished and passivated 316-grade stainless steel for long-lasting performance.

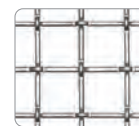
- At 36-in height, max width is 6ft
- At 42-in height, max width is 5ft



ALLURE™
0.120" Dia. Wire
1-1/2" mesh,
Double wire



DAZZLE™
0.120" Dia. Wire
1" Mesh,
Basket press top



METROPOLITAN™
0.105" Dia. Wire
3/4" mesh,
Smooth lock crimp



HORIZON™
0.185" Dia. Wire
3" mesh,
welded wire (no weave)

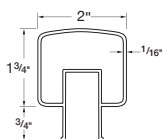
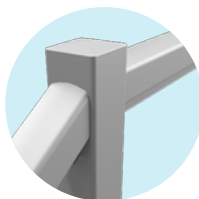
For samples of resin, mesh and laser please go to feeneyinc.com/samples

STEP

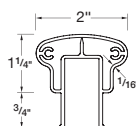
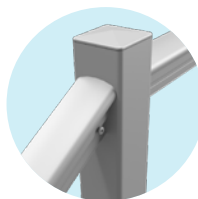
4

Select a top rail style

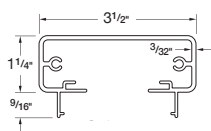
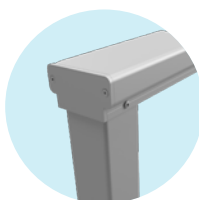
Top rails come in 6 styles and are sold in 10-ft and 20-ft lengths that can be trimmed to size in the field. Series 150 Graspable Top Rails are used on stairs to provide a graspable rail option. Series 150 and Series 100 Top Rails are attached to the faces of the posts using Rail Connecting Brackets (RCBs). Series 200, 300, and 450 Top Rails rest on the tops of the posts and are secured with stainless steel screws. Applied Continuous Handrails with extensions and returns are available as an accessory item to meet ADA and code handrail requirements (see page 14).

**SQUARE TOP RAIL** (Series 100)

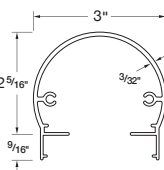
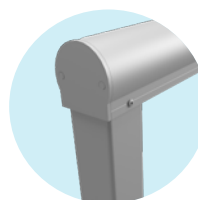
- 2-in wide square-shaped top rail
- The narrow width allows it to be installed between posts (using RCBs) instead of on top of posts, creating a newel-post-style railing with posts rising above the top rail
- Post to post top rail

**GRASPABLE TOP RAIL** (Series 150)

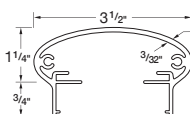
- 2-in wide top rail with easy-to-grasp shape
- Can be used for both stair and horizontal railings
- Meets residential code requirements for stair handrail sizing. Requires a handrail when used on stairs in commercial settings
- Available in new woodgrain colors* (Weathered Gray, Cherry, Walnut)

**RECTANGLE TOP RAIL** (Series 200)

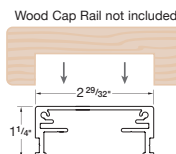
- 3½-in wide rectangular top rail
- The flat surface is a convenient perch for your favorite beverage as you relax and gaze at the view
- Requires a handrail when used on stairs
- Available in new woodgrain colors* (Weathered Gray, Cherry, Walnut)
- Over the post top rail

**ROUND TOP RAIL** (Series 300)

- 1½-in radius top rail
- The smooth rounded shape offers a more contemporary accent to those less traditional architectural designs
- Requires a handrail when used on stairs
- Over the post top rail

**ELLIPTICAL TOP RAIL** (Series 350)

- 3½-in wide elliptical top rail
- The sleek, stylish design offers another option for those who prefer a less angular top rail appearance
- Requires a handrail when used on stairs
- Over the post top rail

**-PROFILE TOP RAIL** (Series 450)

- Low-profile top for adding your own wood or composite cap rails
- Cap rails are optional and are not included
- Requires a handrail when used on stairs
- Over the post top rail

STEP

5

Select a frame & top rail color

Durable, powder coated finishes adhere to AAMA-2604 coating specifications for superior color retention, impact resistance, and weather protection.



COLOR OPTIONS

BRIGHT WHITE

MODERN WHITE

COFFEE CREAM

SILVER

DOVE GRAY

IRON GRAY

BLUE STEEL

MATTE BLACK

TEXTURED BLACK

SPARKLING CHAMPAGNE

BRONZE

OIL RUBBED BRONZE

BRICKYARD RED

COMMODORE BLUE

HARTFORD GREEN

WOOD GRAIN TOP RAIL OPTIONS

(AVAILABLE ONLY IN TOP RAIL SERIES 150/200)

WEATHERED GRAY

CHERRY

WALNUT

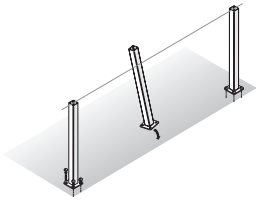
To learn more visit feeneyinc.com/ColorEasy

Easy installation



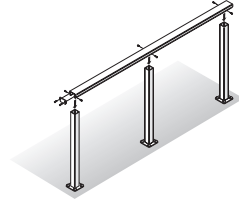
For a complete step-by-step installation instructions and details, visit feeneyinc.com/designrail

1 INSTALL POSTS



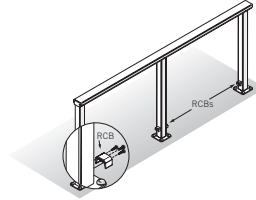
Install the posts starting with the end and corner posts, continuing on to the intermediate posts.

2 ATTACH TOP RAILS



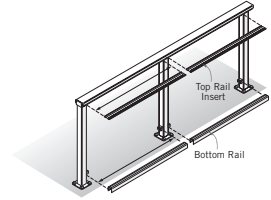
Measure and cut the top rails and attach to posts using screws. If using Series 450 top rail, cut and screw on the wood or composite cap rail. If using the Resin, Mesh or Laser Infill, the top rail will go on after the panels are inserted into the frame. (see below)

3 ATTACH RCBs



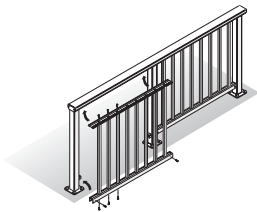
If using bottom rails, screw the Rail Connecting Brackets (RCBs) to the posts for attaching the bottom rails.

4 PREPARE INFILL SUPPORT



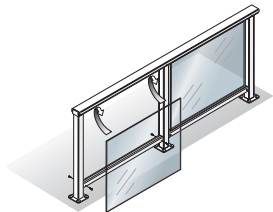
Measure and cut top rail inserts and bottom rails for each panel section.

5 INSTALL INFILL (CHOOSE ONE)



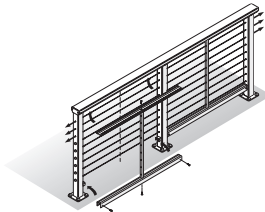
PICKET INFILL

Trim the pre-fabricated panels to length. Lift the complete panel into position on the railing frame and screw in place.



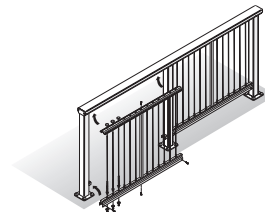
GLASS INFILL

Attach top rail insert and bottom rail to railing frame and insert vinyl liners. Lift the pre-cut panel into the top rail insert, then lower into final position in bottom rail slot.



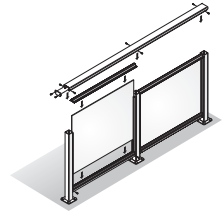
HORIZONTAL CABLE INFILL

Screw intermediate pickets to top rail insert and bottom rail (if using bottom rail), then lift into position on frame and screw in place. Lace cables through pre-drilled holes in posts and pickets, then tighten and trim.



VERTICAL CABLE INFILL

Screw intermediate pickets to top rail insert and bottom rail and loosely attach cables. Lift entire panel into position on railing frame and screw in place. Tighten nuts at bottom for final cable tension.



RESIN, MESH OR LASER PANEL INFILL

Slide the panel into the railing frame and then attach the top rail.

Care and Maintenance

Categorized by material for a more streamlined experience, Feeney offers two care and maintenance documents for both stainless steel and powder-coated aluminum.

To access this material, visit feeneyinc.com/Warranty-and-Care at your convenience.

SteelRenewal™ & SteelProtect™

For best protection of CableRail, Feeney recommends using SteelRenewal™ and SteelProtect™, a stainless steel cleaner and protectant kit combo pack to help maintain your stainless steel surfaces.

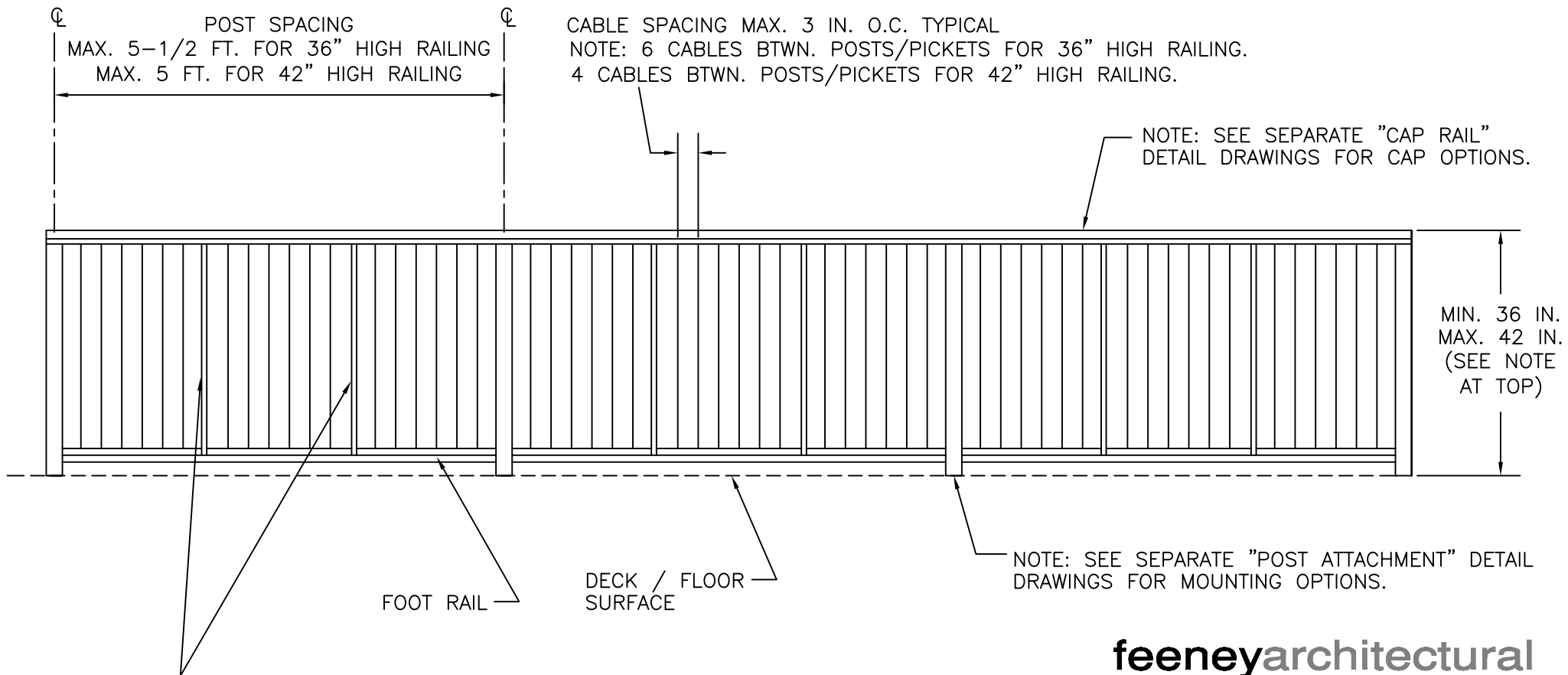
For more information and to purchase these products, visit feeneyinc.com/Feeney-Steel-Renewal-Steel-Protect.



RAILING: VERTICAL CABLE INFILL
36" HIGH ALUMINUM FRAME

DWG # RAIL V-CABLE REV 1
DATE 11/07

NOTE: 42" HIGH RAILING DETAIL SIMILAR WITH ADDITION OF 1 INTERMEDIATE PICKET AND REDUCTION OF POST SPACING TO MAX. 5 FEET (4 CABLES BETWEEN POSTS/PICKETS)



INTERMEDIATE PICKETS:
NOTE: 2 PICKETS BTWN. POSTS FOR 36" HIGH RAILING.
3 PICKETS BTWN. POSTS FOR 42" HIGH RAILING.

feeneyarchitectural
PRODUCTS

DesignRail™—Railing Systems
2603 Union Street
Oakland, CA 94607-2423
Ph: 800-888-2418 or 510-893-9473
Fx: 510-893-9484, www.designrail.com

Vertical Cable Systems

DesignRail®

Important Note: These instructions are for a standardized frame system. Bay infills may vary depending on your distance between posts. Infill rails should be cut so the space between pickets, cables and posts should all appear to be consistent. For systems with 150 or 450 Cap Rail, see detail pages at the end of these instructions.

1) Check Contents Of Packages: Verify that all parts have arrived and that they match the packing list.

2) Gather and Identify All Posts: Use the rail connecting bracket (RCB) holes on each post to identify the post type:

- End posts – RCB holes on one side only.
- Intermediate posts – RCB holes on opposite sides.
- Single corner posts – RCB holes on adjacent sides.

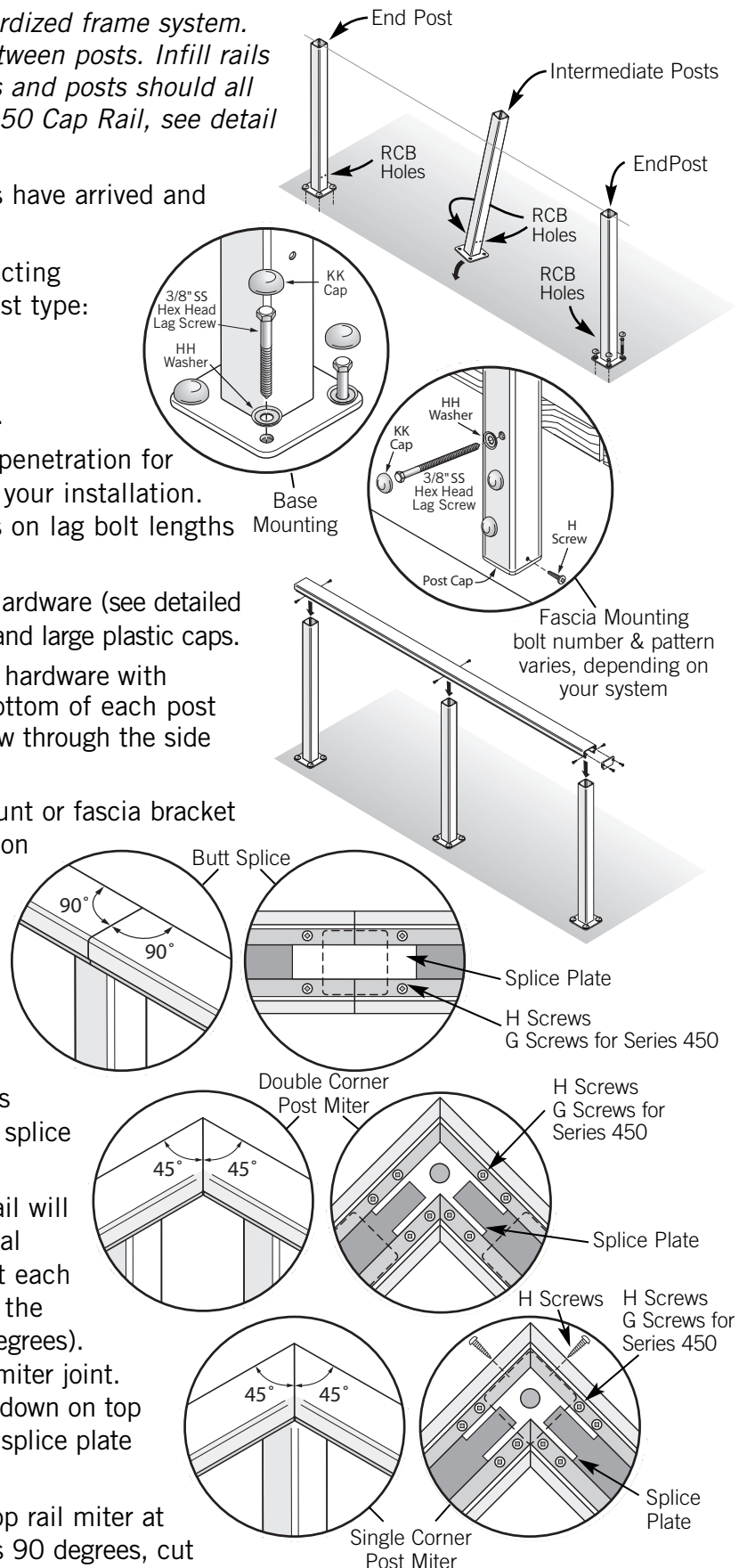
2) Anchor Posts: Position all main posts. The proper penetration for your lag bolts is critical and will vary depending on your installation. See drawing at the end of this document for details on lag bolt lengths for your project.

- Base mounting: anchor each post using provided hardware (see detailed sheet included in your order) with retaining washers and large plastic caps.
- Fascia mounting: anchor each post using provided hardware with retaining washers and large plastic caps. Cover bottom of each post with an post cap; pre-drill post & screw an H screw through the side of the post to secure the post cap.
- If you are mounting posts using the stanchion mount or fascia bracket mount methods, please call for additional installation details.

3) Cut & Snap Top Rails: Cut the top rail to length and then snap it into position on top of the posts or see detail drawing if using 150 Series. Be sure to attach decorative end plates to any ends that butt-up against a wall face or that have limited access.

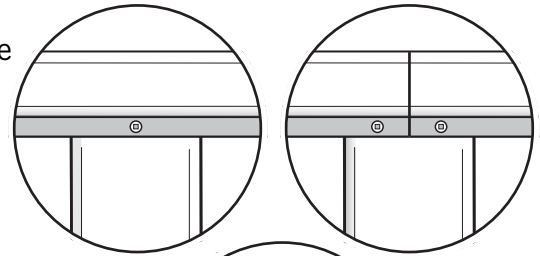
- Butt splices: always cut the top rail at 90 degrees and center the joint over a post. Use a rectangular splice plate with four H screws* to secure this joint.
- Mitered joints with double corner posts: the top rail will extend past each of the corner posts and the actual miter joint will be unsupported. Remember to cut each top rail miter at 1/2 the total corner angle (i.e. if the corner angle is 90 degrees, cut each miter at 45 degrees). Add one splice plate to connect and stabilize the miter joint. Insert the plate before setting the two rail sections down on top of the posts; use eight (8) H screws* to secure the splice plate to the rails.
- Mitered joints with single corner posts: cut each top rail miter at 1/2 the total corner angle (i.e. if the corner angle is 90 degrees, cut each miter at 45 degrees) Center the joint over the corner post.

*Use shorter G screws when installing the Series 450 top rail

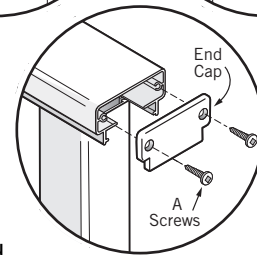


continued on next page

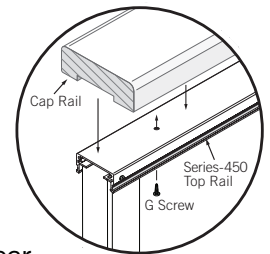
Add one splice plate to connect and stabilize the miter joint. Insert the plate before setting the two rail sections down on top of the post; use eight H screws* to secure the splice plate to the rails. Also, on each side of the miter cut, screw an H screw through the cap rail flange and into the post face.



4) Fasten Top Rails: Secure the top rail to each post using two H screws (four screws for butt splices); screws should run through the cap rail flange and into the center of the post face. Attach screws to both the front and back of each post.



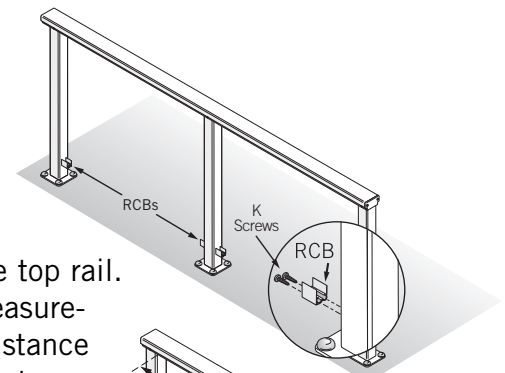
5) Attach Decorative End Caps: Attach the decorative end caps to all of the exposed top rail ends using two A screws. This applies to 200, 300, 350, and 450 Top Rail options.



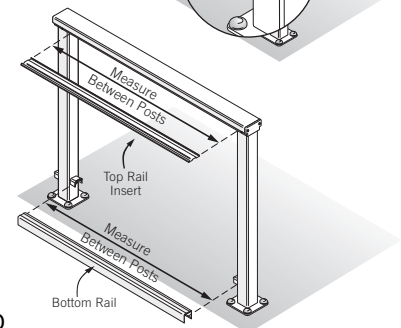
5A) Cut & Attach Wood/Composite Cap Rails (for Series-450 Top Rails only):

A wood or composite cap rail may be used with the Low-Profile Top Rail (Series-450). Cut the wood or composite cap rails to fit the top rails (cap rails supplied by customer). Pre-drill holes through the top rail and use G Pan Head Screws from underneath. Alternatively the wood can be attached with construction adhesive that has a minimum shear strength of 30 psi.

6) Attach RCBs: For the bottom rail, locate the rail connecting bracket (RCB) holes on each post (these are pre-drilled) except on stair rail posts where all the holes must be drilled in the field). Attach the RCBs to the posts using two K screws. The RCBs should be mounted wings up for frames using vertical cable systems.



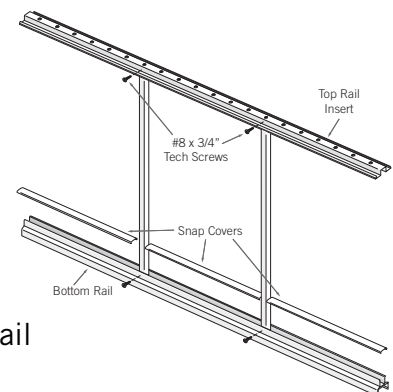
7) Cut Top Rail Inserts: Measure between each set of posts just below the top rail. Cut the top rail insert for each section to $-1/16$ " of your corresponding measurement. Do not attach the top rail inserts to the top rail at this time. The distance between post and cable holes should be between 1-1/2" and 3" inches and equal on both ends. Standard configurations have 6 cables between posts and pickets. Number of cables and pickets may vary due to panel size. Consult your layout sheet.



8) Cut Bottom Rails: Measure between each set of posts just above the RCBs. Cut the bottom rail for each section to $-1/16$ " of your corresponding measurement. Make sure the holes in the bottom rail are in similar placement to the top rail insert so the cables run plumb vertically. Do not attach the bottom rails to the frame at this time.

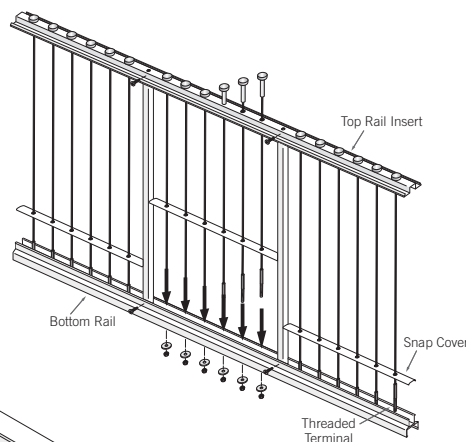
9) Cut Snap Covers: Measure distance between posts and pickets, cut snap covers to $-1/16$ " length. Standard infill bays will have 20 1/4" length of snap cover to use between the two installed pickets. End snap cover sections will vary depending on size of bay.

10) Cut & Install Pickets: Pickets should come cut to length for level railing installations, if not, call for measurements for your particular installation (residential or commercial). Pickets slip in slots in top rail insert and bottom rail and are secured with H screws through side of inserts (see illustration).

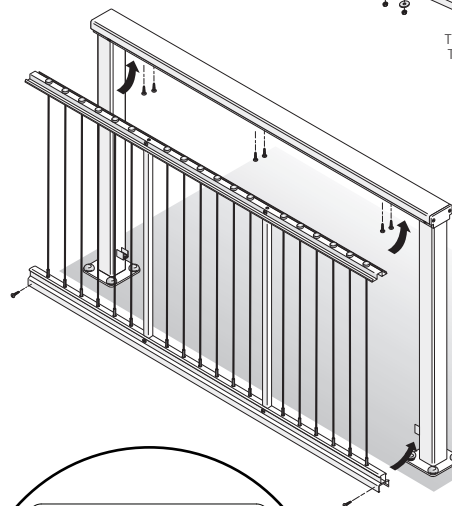


continued on next page

11) Assemble Panels: Thread center cables through center holes on the top rail insert. The threaded terminal of the cable feeds through first, to eventually lace through the bottom rail insert. Position the 20-1/4" section of snap cover over the bottom rail in between the two pickets. Thread the cable through the snap cover and continue through the holes in the bottom rail. Hold snap cover up at this time. Attach washers and nuts on the protruding threaded terminals. Drop the remaining cable assemblies through the remaining holes in the top rail insert and thread through snap covers and bottom rail. Attach remaining washers and nuts.



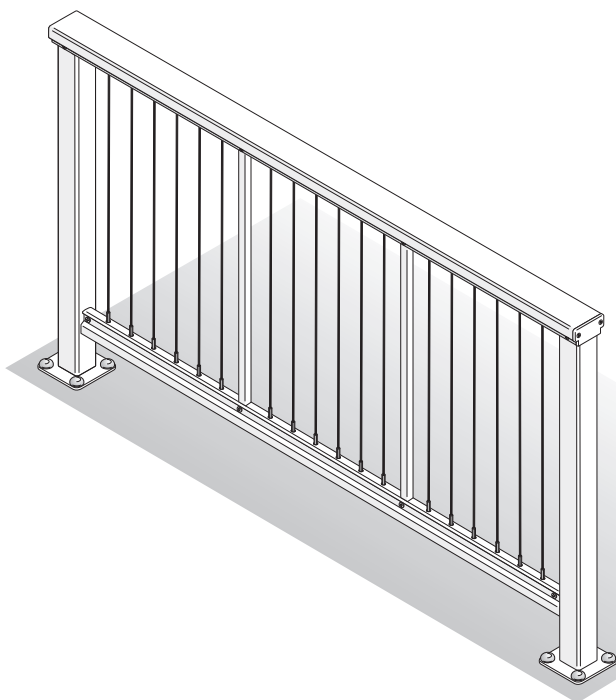
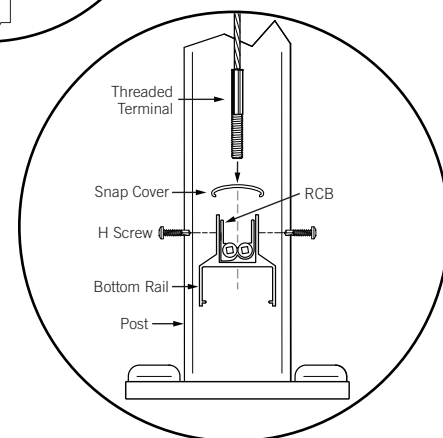
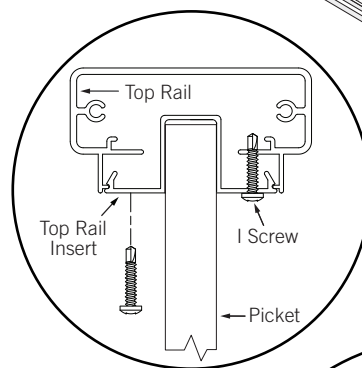
12) Install Panels: Place the assembled panel between posts and lift up into opening of the underside of the top rail. Make sure the RCBs fit into the upper channel of the bottom rail below the snap cover. Snap the top rail insert into the top rail once the infill is aligned.

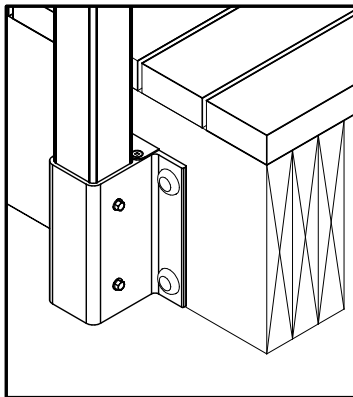


13) Secure Panels: Screw the top rail insert into the top rail from underneath with six "I" screws per panel, two on each end, two in center. Install bottom rails to RCBs with H screws.

14) Tension Cables: Tension cables by spinning nuts concealed under bottom rail. Hold the threaded terminal above the bottom rail with vise-grip pliers while tightening the nut with a socket below. Tension evenly until taught.

15) Fasten Snap Covers: Fasten snap covers to top of bottom rail after tensioning cables. Push down and snap into place.



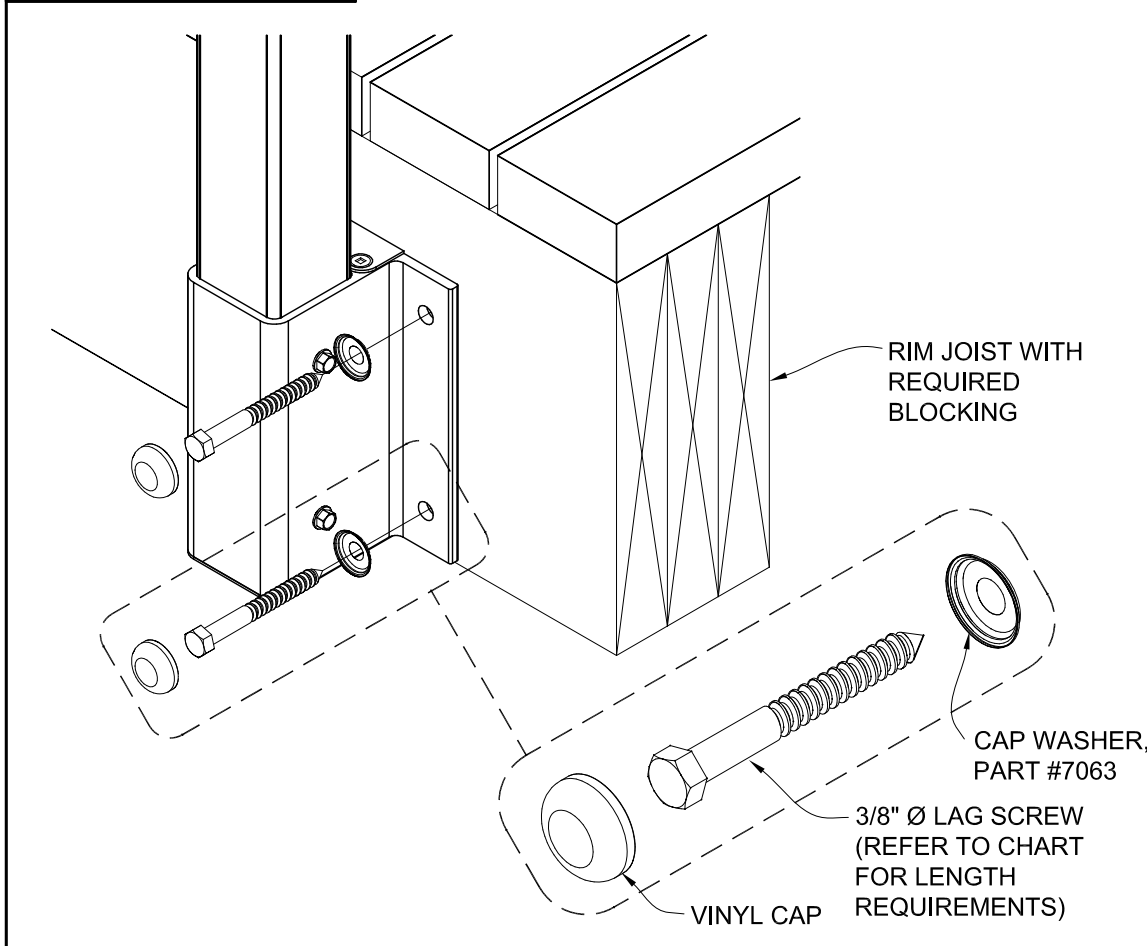


NOTES:
 MINIMUM LAG PENETRATION DIMENSION, REFER TO REQUIREMENTS FOR LAG SCREW PENETRATION INTO SOLID LUMBER. LUMBER ASSUMED TO HAVE A MINIMUM 0.43 SPECIFIC GRAVITY (ie: HEM-FIR).

RIM JOIST AND BLOCKING MUST BE PROPERLY ATTACHED TO STRUCTURE TO RESIST TRANSFERRED LOADS FROM POSTS.

IF USING COMPOSITE MATERIAL AS FASCIA BOARD, FASCIA THICKNESS WILL NOT CONTRIBUTE TO PENETRATION REQUIREMENT. LAG SCREW LENGTH AND BLOCKING MUST BE ADJUSTED TO ACCOUNT FOR ADDITIONAL LENGTH, AS NECESSARY.

BOLT PATTERN MAY VARY DEPENDING ON JOIST HEIGHT AND PROJECT TYPE.



		INTERIOR	EXTERIOR
RESIDENTIAL (MAX 6' OC)	36"	<p>3" MIN. LAG PENETRATION 3-1/2" LAG SCREWS, PART #7277</p>	<p>3-3/4" MIN. LAG PENETRATION 4-1/2" LAG SCREWS, PART #6565</p>
	38"-42"	<p>3-1/4" MIN. LAG PENETRATION 3-1/2" LAG SCREWS, PART #7277</p>	<p>4-1/4" MIN. LAG PENETRATION 4-1/2" LAG SCREWS, PART #6565</p>
COMMERCIAL (MAX 5' OC)	42"	<p>4" MIN. LAG PENETRATION 4-1/2" LAG SCREWS, PART #6565</p>	<p>5" MIN. LAG PENETRATION 6" LAG SCREWS, PART #7278</p>

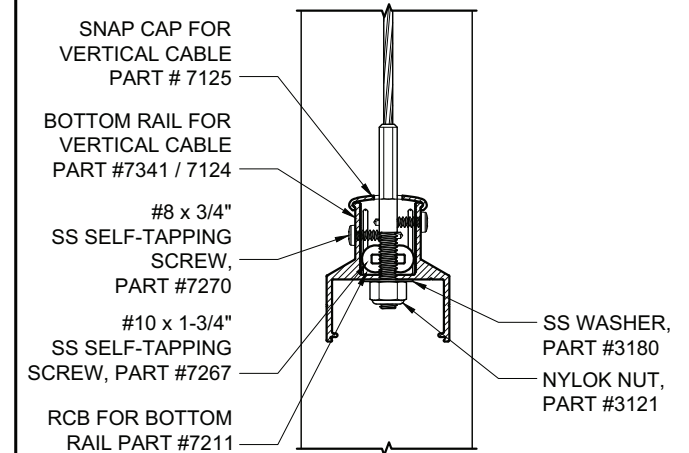
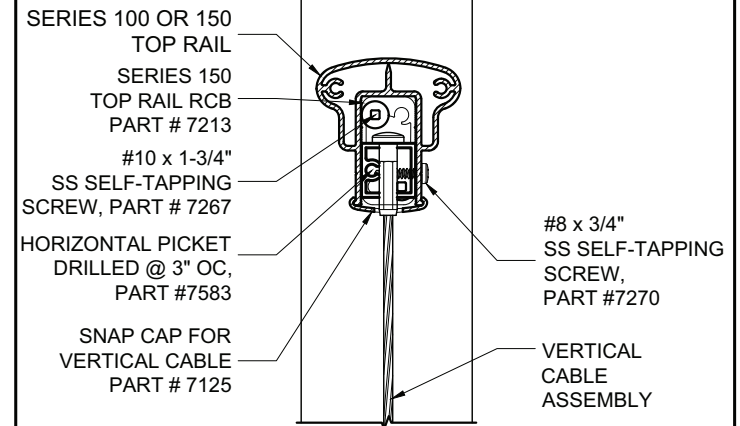
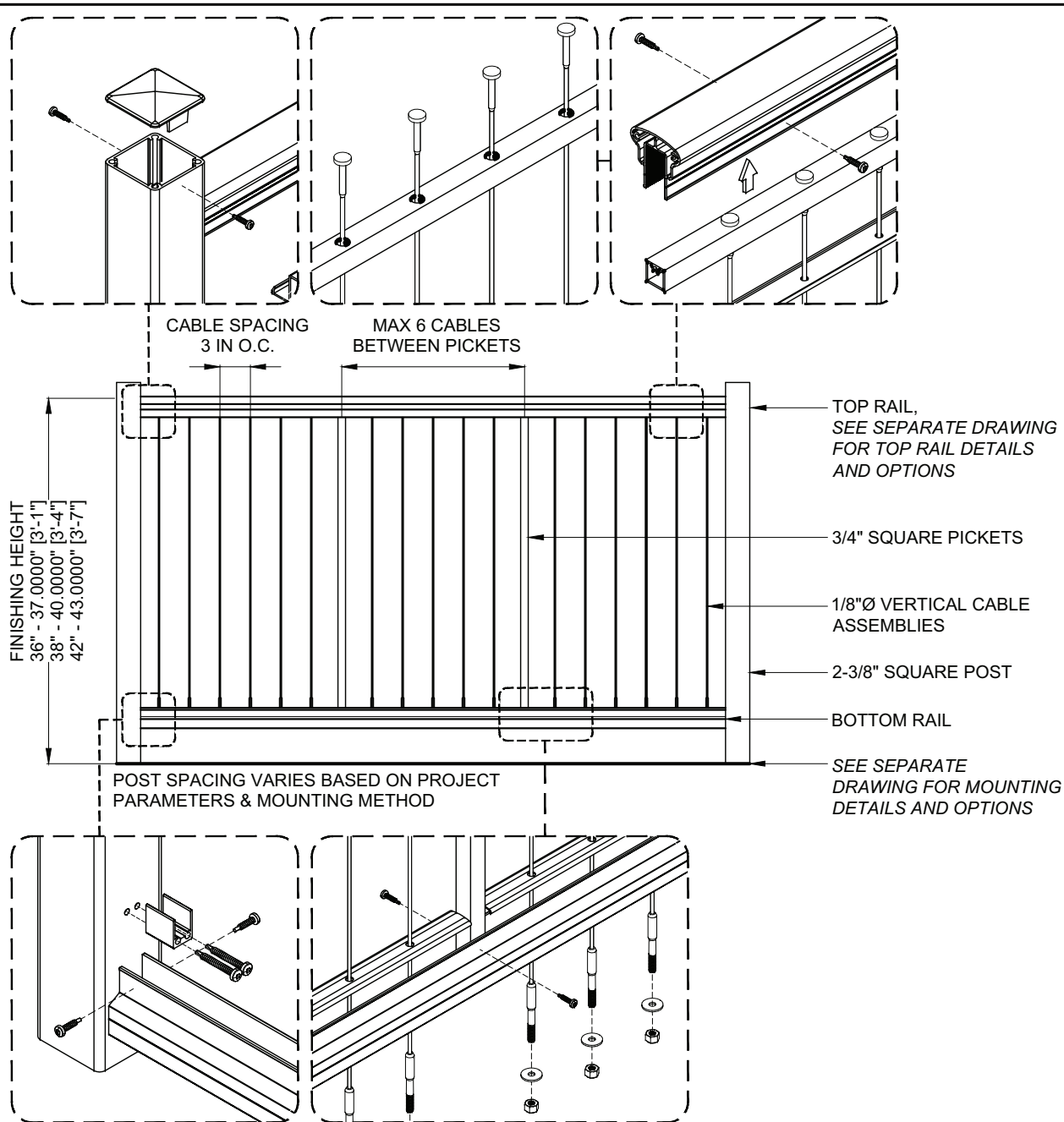
DesignRail® Reference Drawing: FASCIA BRACKET MOUNT TO WOOD - LAG SCREWS

THIS DRAWING IS THE PROPERTY OF FEENEY INC. ANY REPRODUCTION OF THIS DOCUMENT WITHOUT THE EXPRESSED WRITTEN CONSENT OF FEENEY INC. IS STRICTLY PROHIBITED.

DATE:	06/10/15
PAGE:	1 OF 1
REV:	
BY:	BWA
CHK:	

feeney® 

2603 Union St., Oakland, CA 94607
 P: 800-888-2418 F: 510-788-6041
www.feeneyinc.com



	PICKETS	CABLES
36"	7584	6036-VC
38"	7585	6038-VC
42"	7586	6042-VC

DesignRail® Detail Drawing:
VERTICAL CABLERAIL INFILL FOR SERIES 150

THIS DRAWING IS THE PROPERTY OF FEENEY INC. ANY REPRODUCTION OF THIS DOCUMENT WITHOUT THE EXPRESSED WRITTEN CONSENT OF FEENEY INC. IS STRICTLY PROHIBITED.

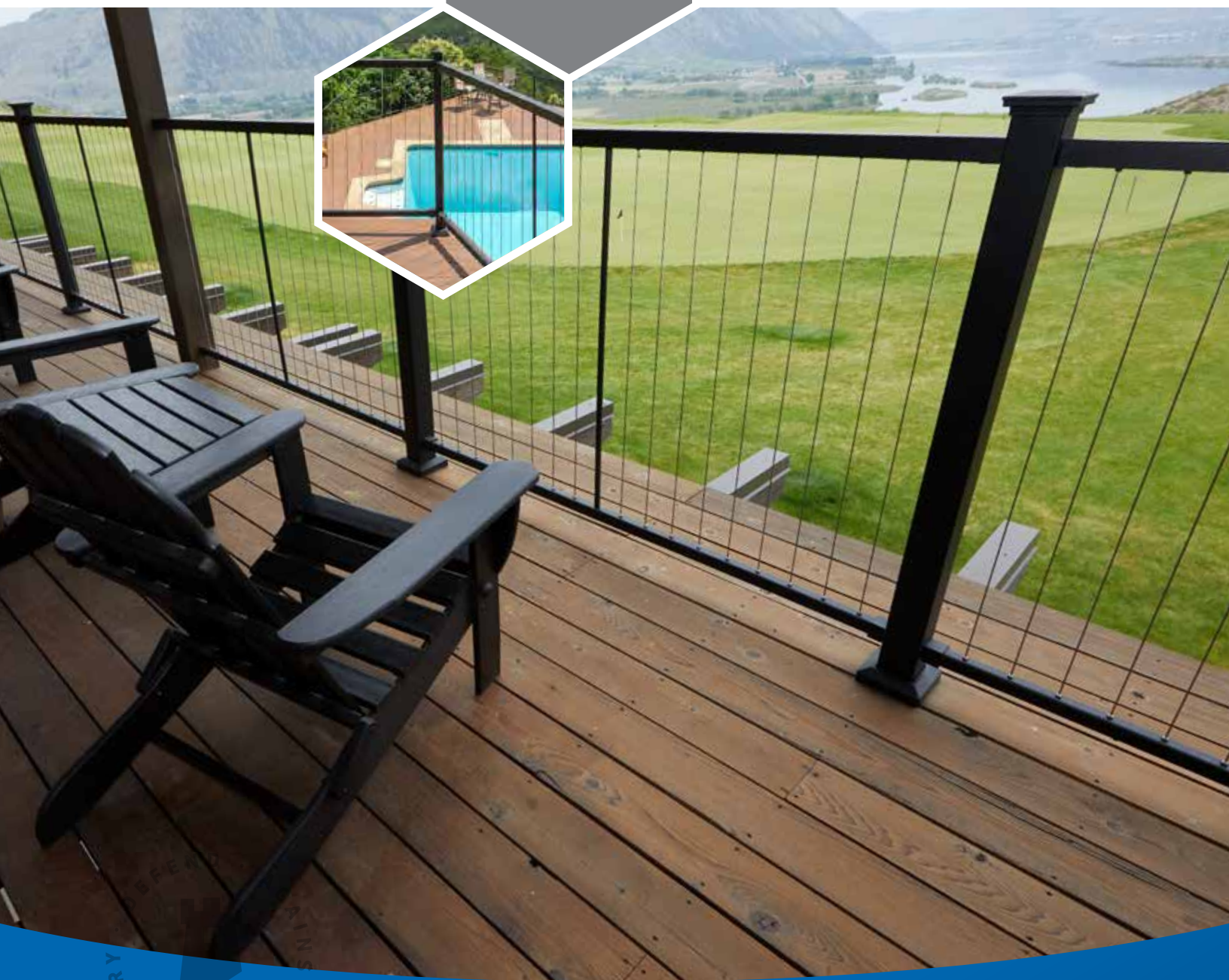
DATE: 12/08/17
 PAGE: 1 OF 1
 REV:
 BY: JTC
 CHK: BWA

feeney 
 2603 Union St., Oakland, CA 94607
 P: 800-888-2418 F: 510-893-9484
 www.feeneyinc.com



FORTRESSCABLE V-SERIES STEEL CABLE RAILING

RETHINK THE RAIL.



THE ORDINARY
AGAINST THE

JOIN THE REVOLUTION.
FortressBP.com | 866.323.4766

**FORTRESS**
BUILDING PRODUCTS



TO REACH NEW HEIGHTS IN DESIGN, GO VERTICAL

Fortress® set out on a mission to create the first vertical cable railing system in the industry—and we succeeded. Now, FortressCable V-Series steel cable railing is not only affordable, but anyone can install it. The sleek top and bottom rail make this option a great choice for style and function.

**RESIST RUST
& CORROSION**

**UNOBSTRUCTED
VIEWS**

**PANELIZED
SYSTEM**



KEY FEATURES

- 1st vertical cable railing panel in the decking/railing industry
- FortressShield-Coated utilizing advanced automotive coating process to resist rust and corrosion
- Pre-assembled for ease of installation
- 316 marine grade stainless steel cable and components
- Works with wood, composite, vinyl and Fortress steel posts
- Quick and easy installation
- Meets ICC-ES™ AC273, NBCC, OBC, ABC and BCBC standards

PREMIUM FINISH

Fortress Cable Railing Black Sand finish is engineered to withstand the elements.



Black Sand

WARRANTY

Manufacturer Warranty

Historically, fortresses were built to protect. The same is true of Fortress Building Products. You can expect coverage the second you decide to embark on your journey with us. We cover our products and the people who buy them. At Fortress, we don't just stand behind our work ... we stand by your side.



CODE
COMPLIANCE

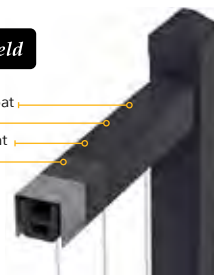


Intertek
CCRR-0248

Protected with



Premium Powder Coat
E-Coat
Quality Pre-treatment
Zinc Galvanized



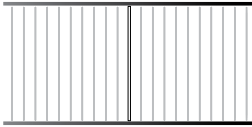
— Simple Assembly —

EASY AS 1, 2, 3, FORTRESS



1 PANELS

Panels can be used with several types of posts such as steel, wood, vinyl or composite



6'
Actual 69.5"
(1765mm)

34" (864mm)
40" (1016mm)

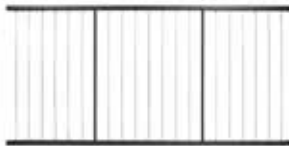
V-SERIES CABLE RAILING PANELS 6'

ITEM#	DESCRIPTION	UPC #
57134608	CR-VERTICAL 34"X6' BKSND	844530016939
57140608	CR-VERTICAL 40"X6' BKSND	844530016953

3.25" (83mm) on center

Support bars are interchangeable with any cable location for versatility

Plastic pieces that cover bolts in top rail are for packaging only and should be removed during installation



8'
Actual 93.5"
(2375mm)

34" (864mm)
40" (1016mm)

V-SERIES CABLE RAILING PANELS 8'

ITEM#	DESCRIPTION	UPC #
57134808	CR-VERTICAL 34"X8' BKSND	844530016946
57140808	CR-VERTICAL 40"X8' BKSND	844530016960

3.25" (83 mm) on center

Support bars are interchangeable with any cable location for versatility

Plastic pieces that cover bolts in top rail are for packaging only and should be removed during installation



8'
Actual 93.5"
(2375mm)

34" (864mm)
40" (1016mm)

ADJUSTABLE STAIR V-SERIES CABLE RAILING PANELS 8'

ITEM#	DESCRIPTION	UPC #
57234808	CR-VERTICAL STAIR 34"X8' BKSND	844530016977
57240808	CR-VERTICAL STAIR 40"X8' BKSND	844530016984

3.25" (83mm) on center

Support bars are interchangeable with any cable location for versatility

Plastic pieces that cover bolts in top rail are for packaging only and should be removed during installation

Install using Universal Bracket UB-05 and Universal Bracket Angle Adapter cannot be installed on a ramp



Vertical

Vertical Stair

V-SERIES I-SUPPORT

ITEM#	DESCRIPTION	UPC #
57504148	CR-VERTICAL I-SUPPORT BKSND	844530017042
57505148	CR-VERTICAL STAIR I-SUPPORT BKSND	844530017949



INSTALLATION TOOLS (TENSION GAUGE)

ITEM#	DESCRIPTION	UPC #
57500001	CABLE RAILING - TENSION GAUGE	844530017066



1 PANELS



Recommend 1 can per 15 panels purchased

AEROSOL TOUCH UP PAINT (WAREHOUSE ONLY)

ITEM#	DESCRIPTION	UPC #
660378	BKSND AEROSOL TOUCH UP PAINT 6OZ	844530012634



Recommend 2 pens per job

TOUCH UP PAINT PEN (WAREHOUSE ONLY)

ITEM#	DESCRIPTION	UPC #
660368	BKSND TOUCH UP PAINT PEN	844530012641

2 POST AND BRACKETS



STEEL POST WITH BASE & BASE COVER 39.5"

ITEM#	DESCRIPTION	UPC #
53302418	FE26-POST 2"X39.5" W/ 4" BASE/COVER BKSND	844530015284
53303418	FE26-POST 3"X39.5" W/ 4" BASE/COVER BKSND	844530015345

STEEL POST WITH BASE & BASE COVER 45.5"

ITEM#	DESCRIPTION	UPC #
53302478	FE26-POST 2"X45.5" W/ 4" BASE/COVER BKSND	844530015314
53303478	FE26-POST 3"X45.5" W/ 4" BASE/COVER BKSND	844530015376

STEEL POST WITH BASE & BASE COVER 55"

ITEM#	DESCRIPTION	UPC #
53302558	FE26-POST 2"X55" W/4" BASE/COVER BKSND	844530027126
53303558	FE26-POST 3"X55" W/4" BASE/COVER BKSND	844530027102

2 POSTS & BRACKETS



49" (1245mm)
55" (1397mm)

2" (51mm)

STEEL POST FOR FASCIA MOUNT BRACKET 2" x 49"

ITEM#	DESCRIPTION	UPC #
53349158	FE26-POST 2"X49" BKSND (13GA)	844530013716

STEEL POST FOR FASCIA MOUNT BRACKET 2"x 55"

ITEM#	DESCRIPTION	UPC #
53355158	FE26-POST 2"X55" BKSND (13GA)	844530013747



49" (1245mm)
55" (1397mm)

3" (76mm)

STEEL POST FOR FASCIA MOUNT BRACKET 3"x 49"

ITEM#	DESCRIPTION	UPC #
53349168	FE26-POST 3"X49" BKSND	844530015406

STEEL POST FOR FASCIA MOUNT BRACKET 3" x 55"

ITEM#	DESCRIPTION	UPC #
53355168	FE26-POST 3"X55" BKSND	844530015437



FASCIA MOUNT BRACKET - STRAIGHT (WITH HEX HEAD BOLT COVER)

ITEM#	DESCRIPTION	UPC #
53502008	FM BRKT STRAIGHT 2" BKSND	844530013273
53503008	FM BRKT STRAIGHT 3" BKSND	844530015161



FASCIA MOUNT BRACKET - OUTSIDE CORNER (WITH HEX HEAD BOLT COVER)

ITEM#	DESCRIPTION	UPC #
50502018	UNIVERSAL FASCIA MNT BRKT 2" OUTSIDE CRNR BKSND	844530027966
50503018	UNIVERSAL FASCIA MNT BRKT 3" OUTSIDE CRNR BKSND	844530027997



FASCIA MOUNT BRACKET - INSIDE CORNER (WITH HEX HEAD BOLT COVER)

ITEM#	DESCRIPTION	UPC #
53502028	FM BRKT INSIDE CNR 2" BKSND	844530013334
53503028	FM BRKT INSIDE CNR 3" BKSND	844530015222



2 POST AND BRACKETS



UNIVERSAL BRACKET 05 - 1.25" (32mm)

ITEM#	DESCRIPTION	UPC #
53505008	FE26-UB-05 BRACKET 1.25" BKSND (Bag of 4)	844530012467

Only 2 of the holes in bracket should be used in a diagonal fashion to attach to post
Bags include 13 metal screws and 9 wood screws



Stair



Angle / Miter

UNIVERSAL BRACKET ANGLE ADAPTER 05 - 1.25" (32mm)

ITEM#	DESCRIPTION	UPC #
53505018	FE26-UB-05 BRACKET ANGLE ADAPTER 1.25" BKSND (Bag of 4)	844530012474

Universal Bracket and Angle Adapter must be used together
Bags include 9 metal screws for attaching to Universal Bracket

3 PERSONALIZATION



6'
Actual 69.5"
(1765mm)

8'
Actual 93.5"
(2375mm)

FLAT ACCENT TOP RAIL

ITEM#	DESCRIPTION	UPC #
57513608	CR-FLAT ATR-6' BKSND	844530016915
57513808	CR-FLAT ATR-8' BKSND	844530016922

No other ATP/ATR can be used with FortressCable panel



1.25" V-SERIES CABLE CAP RAIL CLIP (32mm)

ITEM#	DESCRIPTION	UPC #
57505058	CR-CAP RAIL CLIP-1.25" BKSND (BAG 4)	844530016137

Use to cover top rail with a deck board to create a "drink rail"
Wood screws included
28" (711mm) spacing recommended



2" (52mm)



3" (76mm)

PRESSED DOME CAP

ITEM#	DESCRIPTION	UPC #
53502108	FE26-PRESSED DOME CAP 2" BKSND	844530012399
53503108	FE26-PRESSED DOME CAP 3" BKSND	844530012856

For caps with lighting capabilities please visit fortressbp.com/lighting-accessories



DISCOVER THE TOTAL SOLUTION

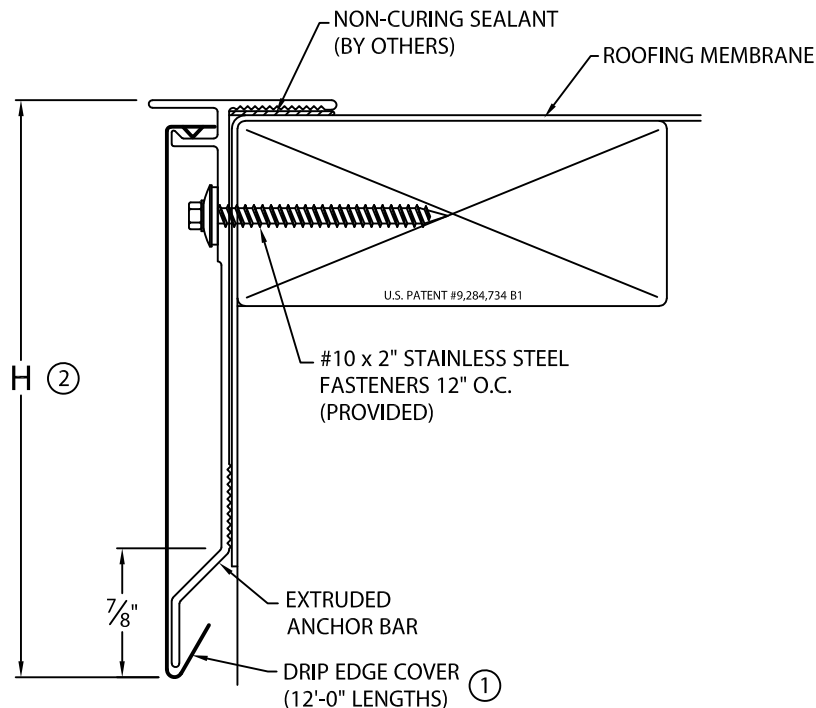
Explore our complete collection of revolutionary products that can work in harmony or stand alone to create beautiful, long-lasting spaces.

© 2021 Fortress Building Products. Unless otherwise noted, all proprietary names are trademarks of Fortress Iron, LP. All rights reserved.



ANCHOR-TITE DRIP EDGE

ANSI/SPRI ES-1 TESTED



NOTES:

- ① FASCIA COVER PROVIDED WITH 1" LAP JOINTS.
② TYPICALLY COVERAGE SHOULD EXTEND A MIN. OF 1½" BELOW WOOD BLOCKING IF APPLICABLE

ANCHOR-TITE DRIP EDGE DIMENSIONS

PRODUCT ID. NO.	H DIM
<input type="checkbox"/> AFDE-30	3"
<input type="checkbox"/> AFDE-45	4½"
<input type="checkbox"/> AFDE-60	6"
<input type="checkbox"/> AFDE-75	7½"

Fabrication will proceed only after receipt of signed print approval.

Print Approval:

Architect and/or contractor shall verify all dimensions, sizes and quantities. All products to be installed in strict accordance with Metal-Era's printed instructions.

Approved by: _____

Date: _____

MATERIAL:

____ 24 GA. GALVANIZED STEEL

____ .040" ALUMINUM

____ OTHER _____

COLOR: _____

FINISH: _____

QUANTITIES:

____ LINEAL FEET 12'-0" LENGTHS

____ OUTSIDE MITER(S) @ 90°

____ INSIDE MITER(S) @ 90°

FOR NON-90 MITERS SEE PRINT APPROVAL #11010-1103

PROJECT:

ARCHITECT:

ROOFING CONTRACTOR:

REPRESENTATIVE/DISTRIBUTOR:

Corporate Offices, Manufacturing
1600 Airport Road; Waukesha, WI 53188
Phone: 800-558-2162
Fax: 800-373-9156
www.metalera.com



DATE: 07/10/19

DRN BY: JJC

CKD BY: SAK

SHT.# ____ OF ____

DWG# 11010-20546

G

MAXIMUM PROTECTION AND WATER DRAINAGE FOR YOUR ROOF

Anchor-Tite® Drip Edge combines custom engineering and superior performance with an attractive appearance.

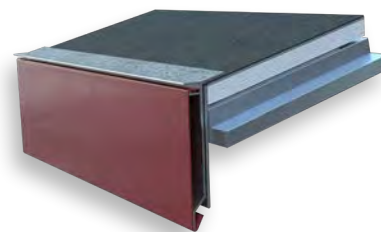
The patented design of our extruded aluminum anchor bar securely terminates the EPDM, PVC, or TPO membrane, providing protection superior to any shop-fabricated drip edge.

With a variety of unique applications, the Anchor-Tite Drip Edge is easy to install and cuts down on the labor, while providing the strength and water drainage you need to protect your roof.



Standard
Version

Pitched
Flange



ANCHOR-TITE DRIP EDGE AT-A-GLANCE

215 MPH Lifetime Wind Warranty

ANSI/SPRI/FM 4435/ES-1 Tested

FM Approved for Wind Uplift Protection

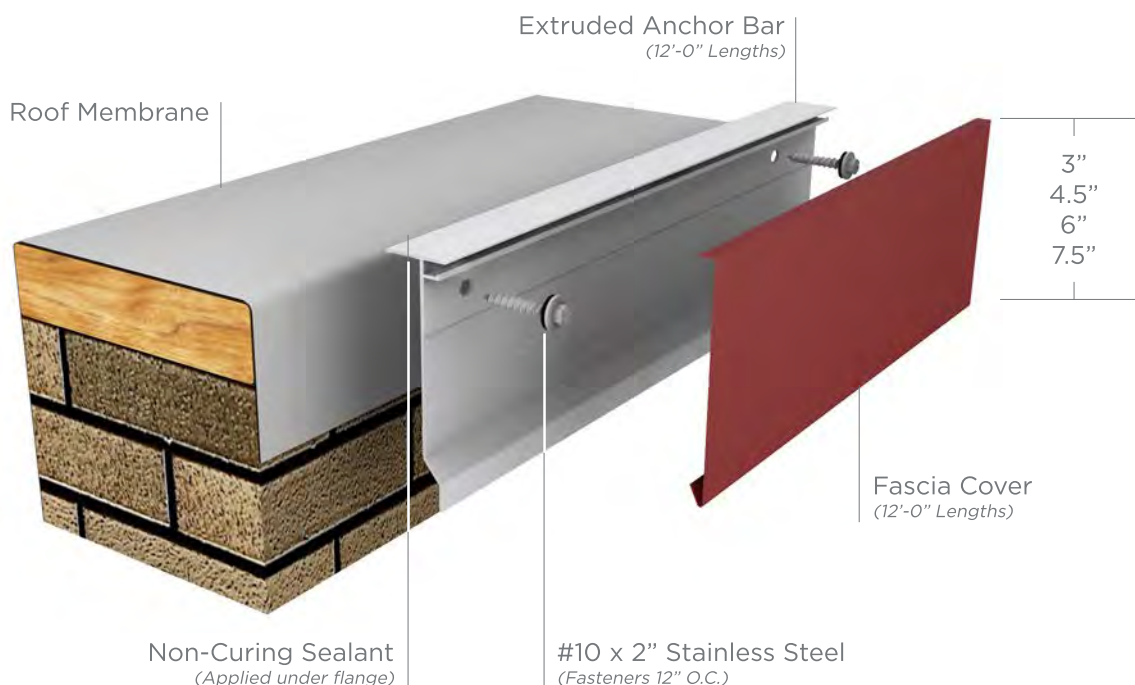
Provides Proper Water Drainage

Variety of Colors, Sizes & Materials

Easy Install = Decreased Labor Costs

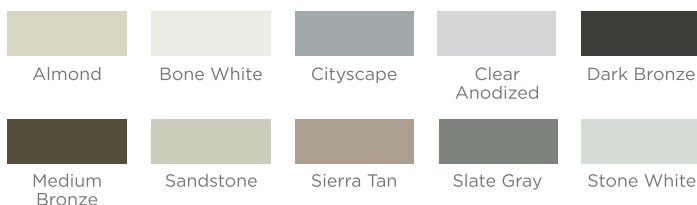


VERSIONS	STANDARD SIZES	COVER MATERIALS
<ul style="list-style-type: none"> • Standard • Pitched Flange (for sloped roofs up to 4"/12" pitches) 	<ul style="list-style-type: none"> • 3" • 4.5" • 6" • 7.5" 	<ul style="list-style-type: none"> • 24 ga. Steel • .040" Aluminum



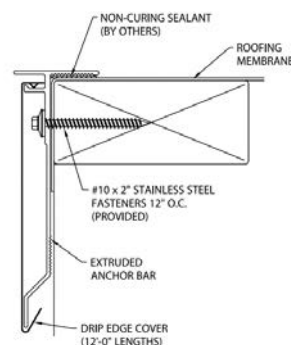
10 EXPRESS COLORS FOR QUICK SHIPPING

Express, standard, and premium colors and finishes are available to meet your job requirements and includes a 30-year Kynar 500® finish warranty on coil-coated standard colors. Custom colors are also available. For the most accurate color representation, contact us to request a paint chip.



All colors are also available in Mill Finish.

EASY, EFFICIENT INSTALLATION

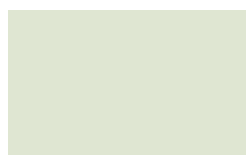


Typical Installation
Standard Version

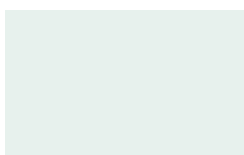
- Full snap-on design with extruded aluminum bar for easy installation
- No stripping-in or heat-welding typical with other systems for overall labor savings
- Prefabricated miters and accessories to prevent need for field fabrication
- Provided in 12'-0" lengths with pre-punched holes for quicker installation

COLOR CHART

Express Colors *



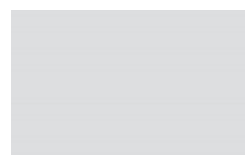
Almond ●



Bone White ●



Cityscape ●



Clear Anodized



Dark Bronze ●



Medium Bronze ●



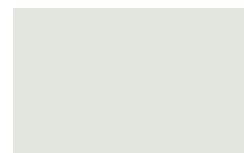
Sandstone ●



Sierra Tan ●



Slate Gray ●



Stone White ●

Standard Colors



Cardinal (Regal)
Red ●



Charcoal
(Charcoal Gray) ●



Colonial Red ●



Evergreen ●



Forest (Sherwood)
Green



Granite ●



Hartford Green



Hemlock Green ●



Hunter Green ●



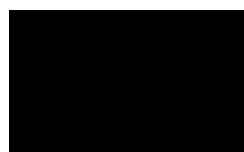
Interstate (Regal)
Blue



Mansard Brown ●



Matte Black ▲



Glossy Black ▲



Midnight (Extra Dark)
Bronze



Musket Gray ●



Patina Green ●▲



Sky (Military) Blue ●



Slate Blue ●



Terra Cotta ●

Premium Colors



Aged Copper ●



Award Blue



Champagne
(Metallic) ●



(Classic) Copper
Penny ●



Sand Stone ■★



Silver (Metallic) ●



Silversmith



Weathered Zinc ●



Zinc ●

- * = Also in Mill Finish
- = Post-Painted
- = Energy Star Rated
- ▲ = Must Specify Supplier
- ★ = Available in 3 Other Stone Colors

Our colors are deep, rich and true. Made of Valspar's Fluorpon® High Performance Hylar 5000®/Kynar 500® finish, they offer the ultimate in resistance against fading and weathering. Custom colors also available.

METL-0008

400 SERIES WOODWRIGHT® DOUBLE-HUNG WINDOW



Interior



Exterior

Summary

Product ID#	WDH2446
Unit Width	29 5/8"
Unit Height	56 7/8"
Interior Color	White
Glass	Low-E4® Glass
Hardware	Easy-Tilt Release Lock, White
Optional Hardware	None, White
Grille Pattern	None
Exterior Color	White
Exterior Trim Profile	None
Exterior Trim Color	White

REJUVENATION



Dayton Neoclassical 3-1/4" Fitter Wall Sconce

Item #A2927

<http://www.rejuvenation.com/s/1bo40>

Specification	Detail
Item #	A2927
Finish	Black Enamel
Socket Type	E26
Shade	B5105-OP
Shade SKU	B5105-OP
Maximum fixture wattage per socket	60 W
UL Listing	UL Listed Wet
Canopy	5"
Overall fixture width	6"
Length	10-1/2"
Overall fixture depth	9"
Shade height	6"

Base price: \$110.99

Selected options total: \$50.00

Total price as shown* : \$160.99

*Shipping and handling fees apply

Smooth-Star®



Half Lite 2 Panel | Style No. S206  

S206 is rated 3.5 out of 5 by 16.

7 Available Sizes ›



VIEW ON HOME

THERMA-TRU VIBRANT PAINT OPTIONS



Looking for more information on finishing options? Check out our [finishing page](#) and learn how you can use finish to make your house a home with Therma-Tru.

GLASS OPTIONS



Clear



Clear 1 Lite No Grid



DESIGN YOUR DOOR

WHERE TO BUY

ORDER FINISH SAMPLES



Product name or item number...

FLAGPOLES ▾

FLAGS ▾

HARDWARE ▾

FLAGPOLE LIGHTING ▾

ABOUT US

[Home](#) / [Flagpoles](#) / [Commercial Flagpoles](#) / [Outrigger Wall Mounted Flagpoles](#) / [Outrigger Wall Mounted Flagpole](#)



Outrigger Wall Mounted – ECOS10

***** (0 customer reviews)

\$664.13

1

ADD TO CART

SKU: 204964

Category: [Outrigger Wall Mounted Flagpoles](#)