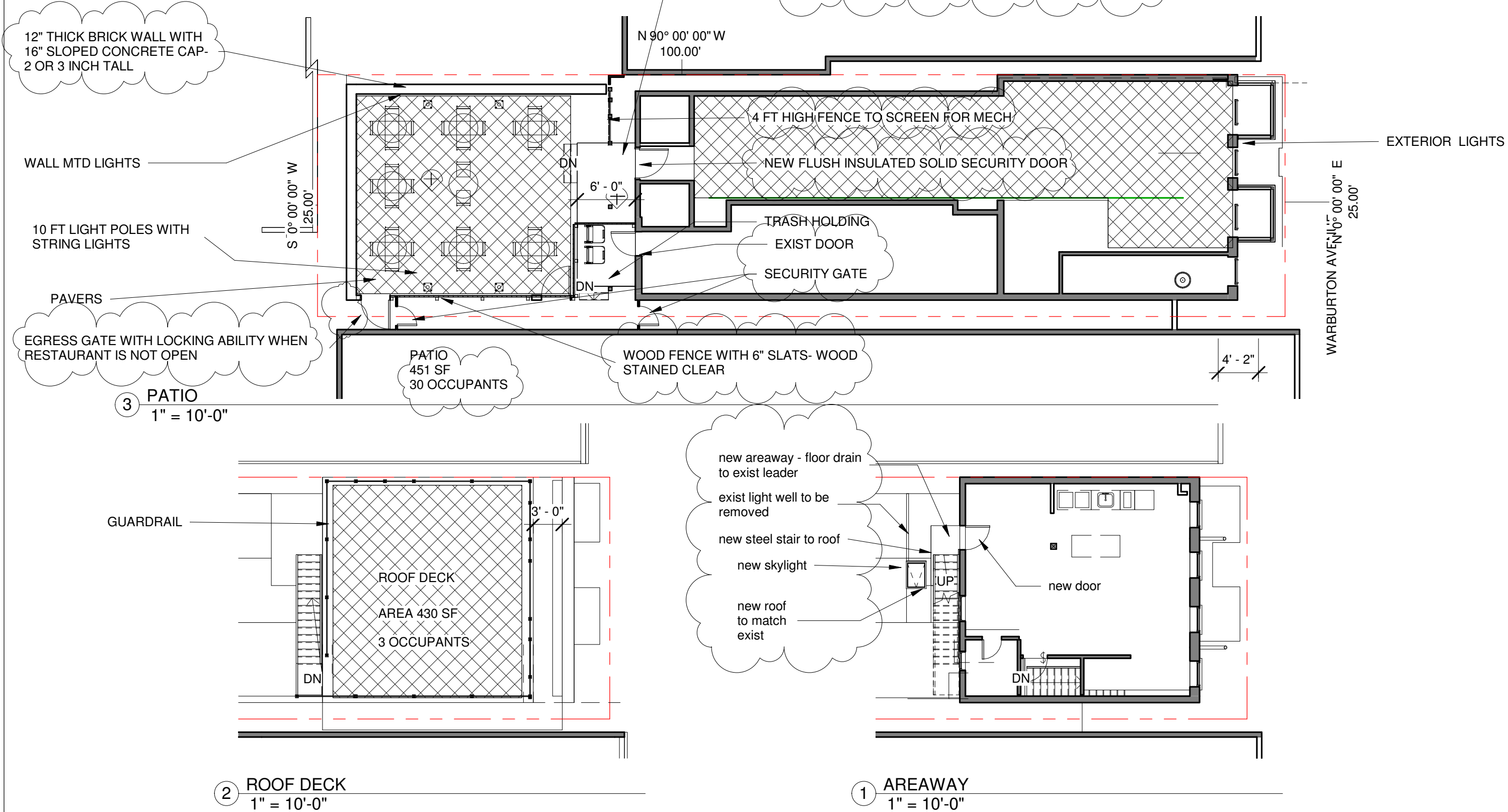
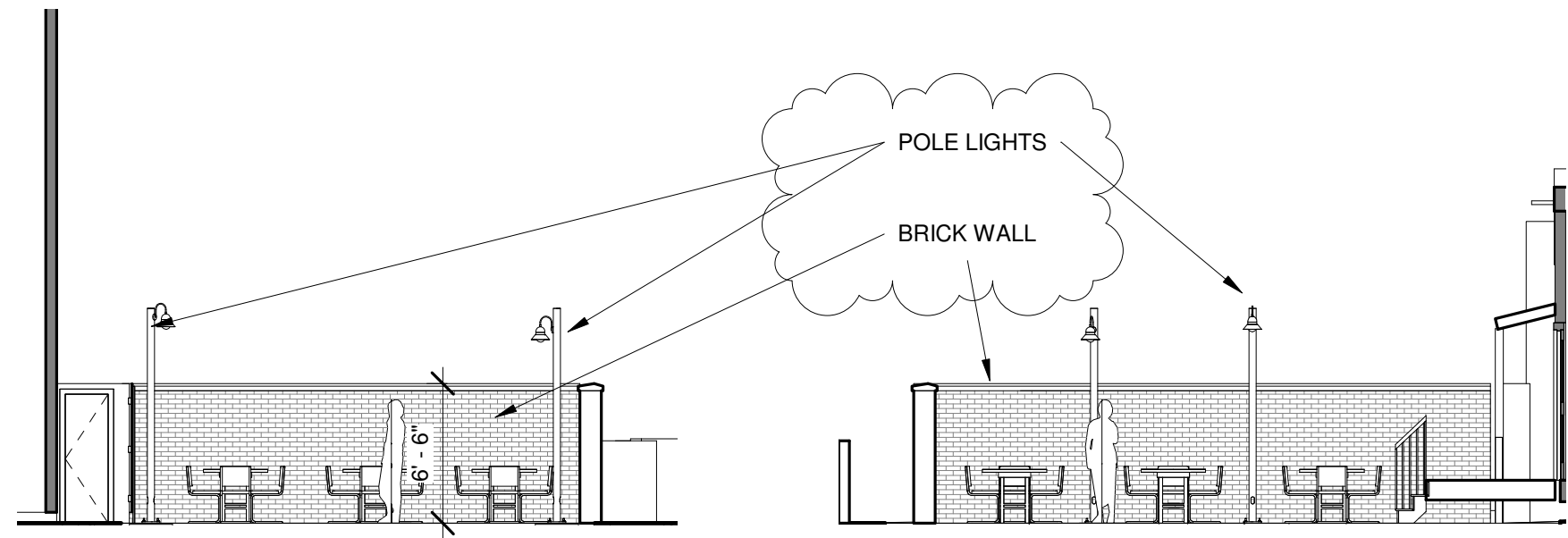


NOTES

1. WALLS AND FENCE ARE 6'-6" TALL
2. ALL REAR LIGHTS ARE DARK SKY CERTIFIED. FRONT LIGHTS ARE IN SHELTERED PLACES
3. SEE ELEVATIONS FOR LOCATION OF LIGHTS

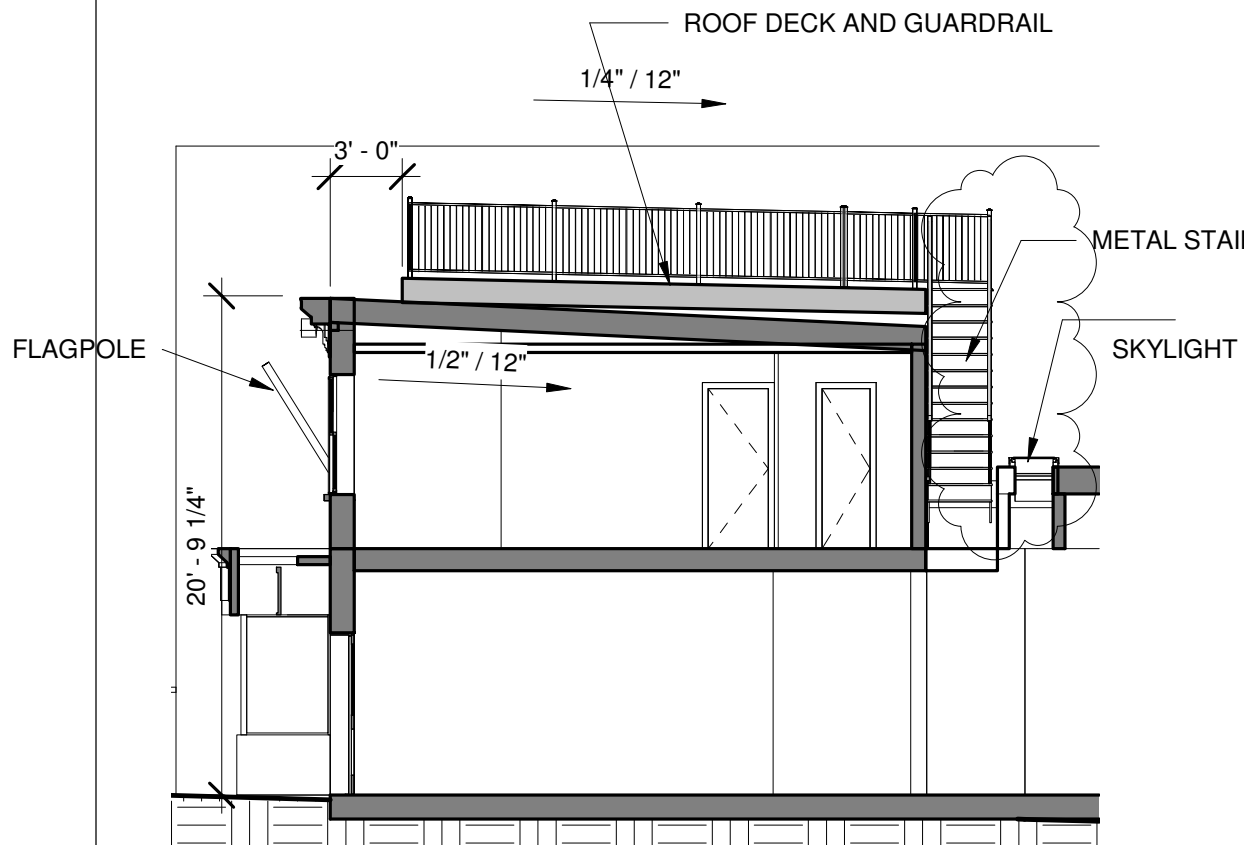


No.	Description	Date	Trio Architecture pllc Hastings on Hudson, NY 914.907.2511		Dan Sbrega		Patio Roof Deck		plans	
2	PB/ZBA/ARB	6/14/21					583 Warburton Ave Hastings on Hudson, ny 10706		Date	06/10/21
3	PB REVISIONS	8/19/21							Scale	1" = 10'-0"
4	ARB REVISIONS	8/30/21							A100	
5	ARB REQUEST	9/16/21								

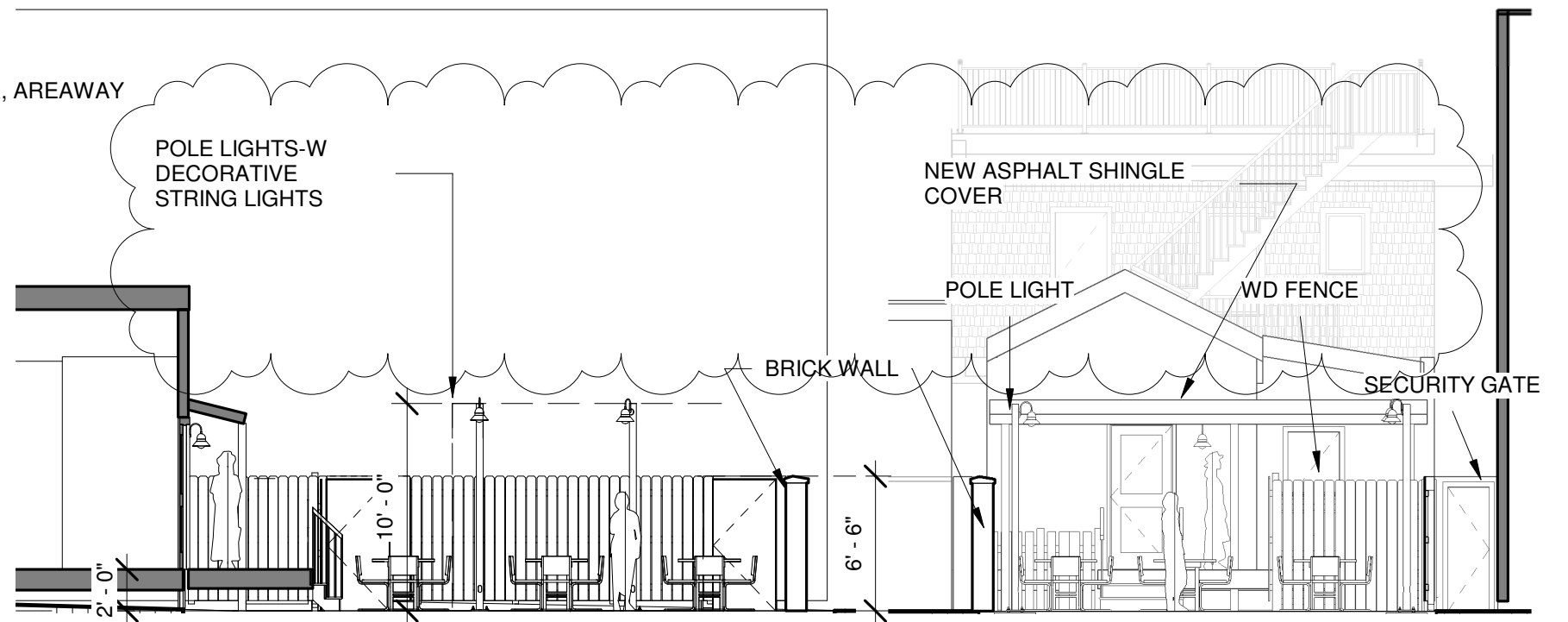


① rear patio  
1/8" = 1'-0"

② side patio  
1/8" = 1'-0"



③ section thru bldg & site  
1/8" = 1'-0"



④ rear of bldg  
1/8" = 1'-0"

No.	Description	Date
3	PB REVISIONS	8/19/21
4	ARB REVISIONS	8/30/21
5	ARB REQUEST	9/16/21

**Trio Architecture pllc**  
**Hastings on Hudson, NY**  
**914.907.2511**

Dan Sbrega

Patio Roof Deck

583 Warburton Ave  
Hastings on Hudson, ny 10706

elevations & sections

Date 06/10/21

Scale 1/8" = 1'-0"

A200

No.	Description	Date
4	ARB REVISIONS	8/30/21
5	ARB REQUEST	9/16/21

**Trio Architecture pllc**  
**Hastings on Hudson, NY**  
**914.907.2511**

Dan Sbrega

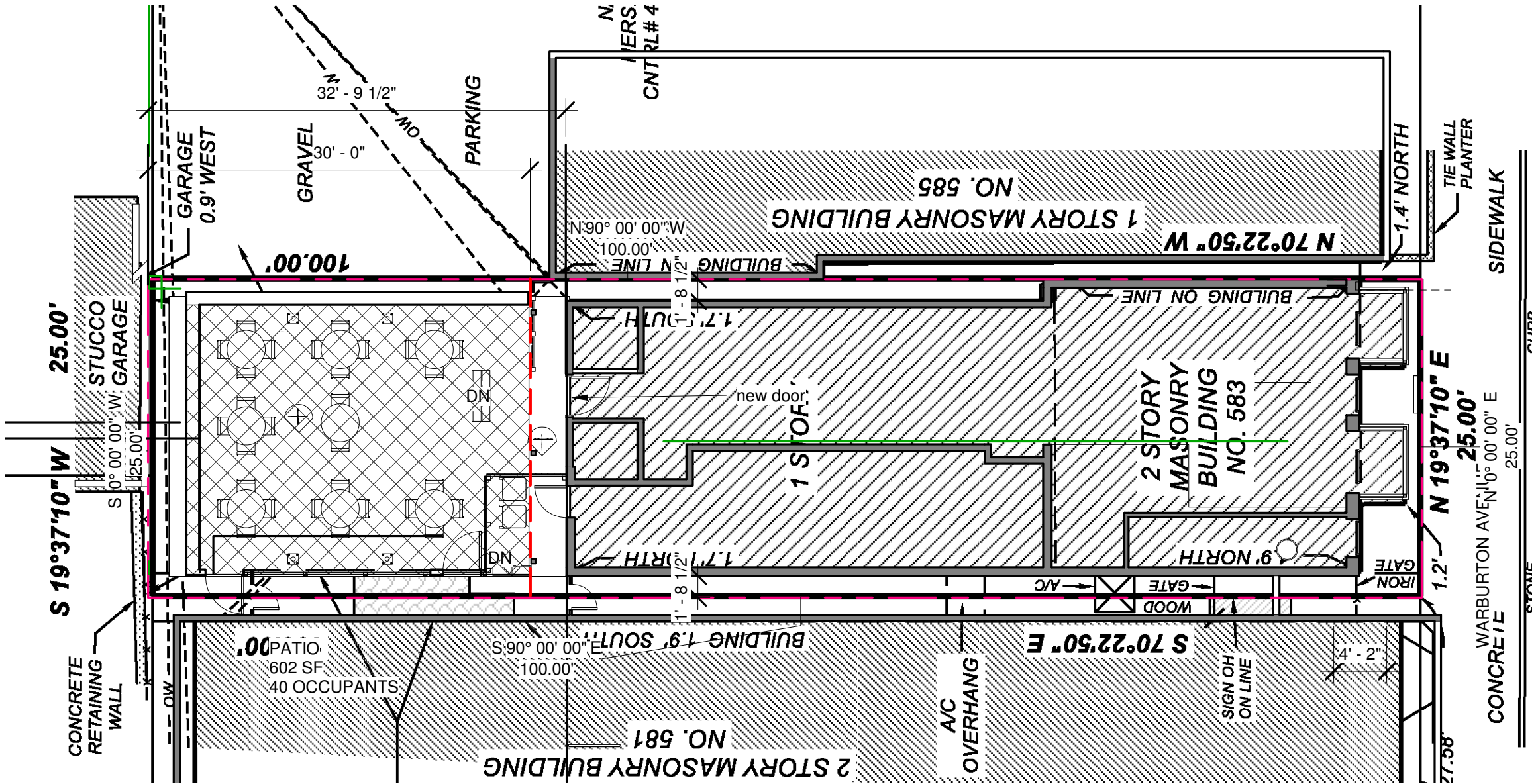
Patio Roof Deck

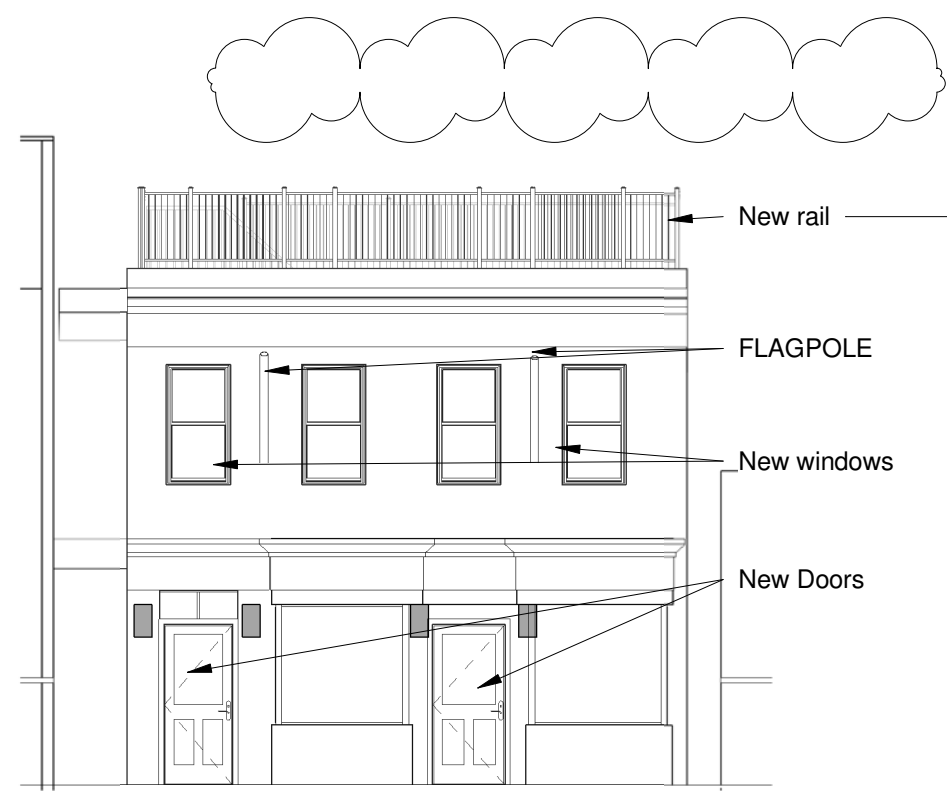
583 Warburton Ave  
Hastings on Hudson, ny 10706

Survey

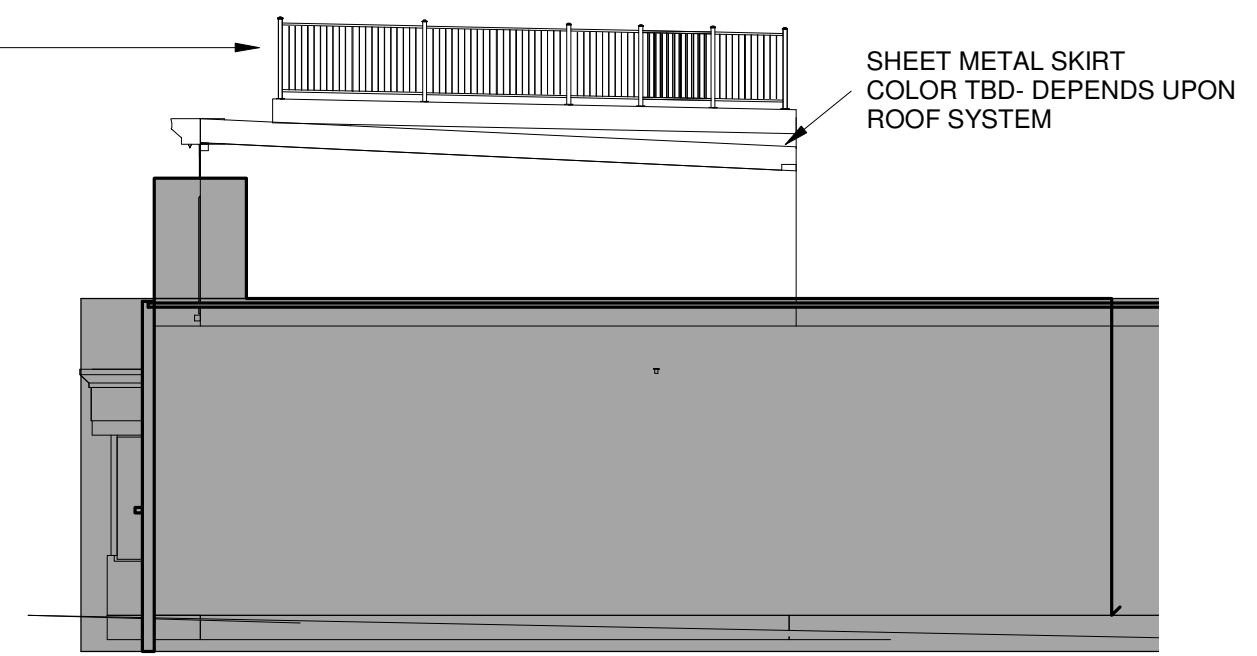
Date	06/18/21
Scale	1" = 10'-0"

A201

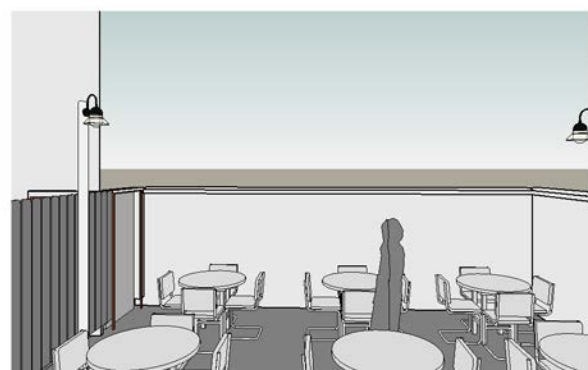




1 Warburton Elevation  
1/8" = 1'-0"



3 North  
1/8" = 1'-0"



	No.	Description	Date	583 Warburton Ave Hastings on Hudson, ny 10706	Trio Architecture pllc Hastings on Hudson, NY 914.907.2511	Patio Roof Deck	Front		
	2	PB/ZBA/ARB	6/14/21				Date	Issue Date	A202
	3	PB REVISIONS	8/19/21						
	4	ARB REVISIONS	8/30/21						
	5	ARB REQUEST	9/16/21			Dan Sbrega	Scale	1/8" = 1'-0"	









Product name or item number...

FLAGPOLES ▾

FLAGS ▾

HARDWARE ▾

FLAGPOLE LIGHTING ▾

ABOUT US

[Home](#) / [Flagpoles](#) / [Commercial Flagpoles](#) / [Outrigger Wall Mounted Flagpoles](#) / [Outrigger Wall Mounted Flagpole](#)



## Outrigger Wall Mounted – ECOS10

★★★★★ (0 customer reviews)

**\$664.13**

1

ADD TO CART

SKU: 204964

Category: [Outrigger Wall Mounted Flagpoles](#)

# REJUVENATION



## Dayton Neoclassical 3-1/4" Fitter Wall Sconce

Item #A2927

<http://www.rejuvenation.com/s/1bo40>

Specification	Detail
Item #	A2927
Finish	Black Enamel
Socket Type	E26
Shade	B5105-OP
Shade SKU	B5105-OP
Maximum fixture wattage per socket	60 W
UL Listing	UL Listed Wet
Canopy	5"
Overall fixture width	6"
Length	10-1/2"
Overall fixture depth	9"
Shade height	6"

**Base price: \$110.99**

**Selected options total: \$50.00**

**Total price as shown\* : \$160.99**

\*Shipping and handling fees apply





# Smooth-Star®



Half Lite 2 Panel | Style No. S206  

S206 is rated 3.5 out of 5 by 16.

**7 Available Sizes ›**




**VIEW ON HOME**


## THERMA-TRU VIBRANT PAINT OPTIONS



**Looking for more information on finishing options?** Check out our [finishing page](#) and learn how you can use finish to make your house a home with Therma-Tru.

## GLASS OPTIONS ⓘ

 Clear ▼

 Clear 1 Lite No Grid ▼

DESIGN YOUR DOOR

WHERE TO BUY

ORDER FINISH SAMPLES

# 400 SERIES WOODWRIGHT® DOUBLE-HUNG WINDOW



Interior



Exterior

## Summary

<b>Product ID#</b>	WDH2446
<b>Unit Width</b>	29 5/8"
<b>Unit Height</b>	56 7/8"
<b>Interior Color</b>	White
<b>Glass</b>	Low-E4® Glass
<b>Hardware</b>	Easy-Tilt Release Lock, White
<b>Optional Hardware</b>	None, White
<b>Grille Pattern</b>	None
<b>Exterior Color</b>	White
<b>Exterior Trim Profile</b>	None
<b>Exterior Trim Color</b>	White







#### TREX® CLADDING™

A new side to Transcend.  
Learn about the architects' choice in elegant, worry-free residential armor at [cladding.trex.com](https://cladding.trex.com)

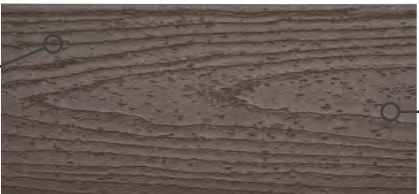
# Trex Transcend®

## EARTH TONES

### A CLASSIC LOOK FOR UNCOMPROMISING HOMES

Like its tropical counterpart, Trex Transcend® Earth Tones gives homeowners the freedom and confidence to design to every curve of the imagination. These premium composite boards stand apart with a monochromatic color palette as timeless as its inspiration: nature itself.

SHOWN IN VINTAGE LANTERN



A luxurious look that lasts

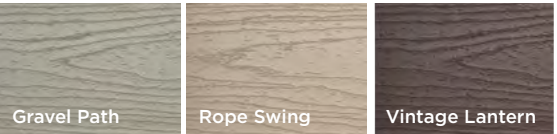
Consistent monochromatic color, end to end

BOARD PROFILES

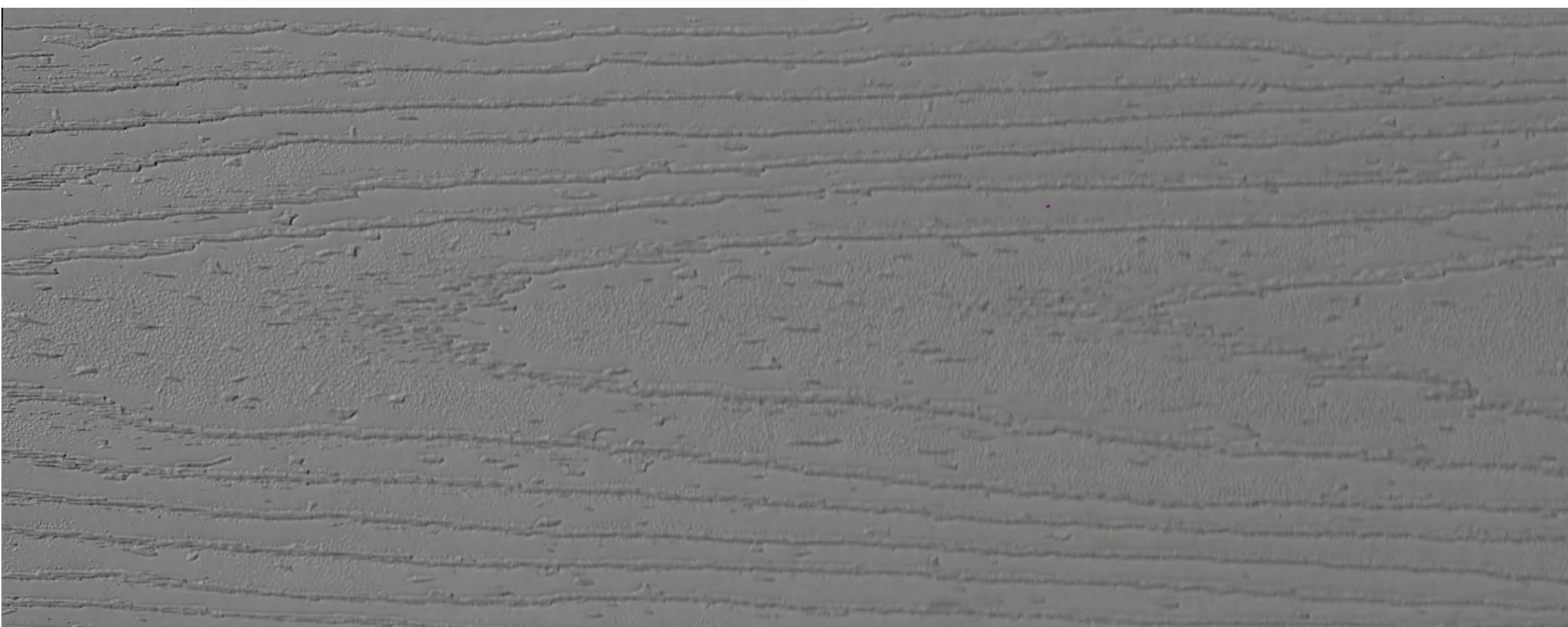


Curveable boards for endless design possibilities

Use Trex Hideaway® Hidden Fastening System for a clean, fastener-free appearance



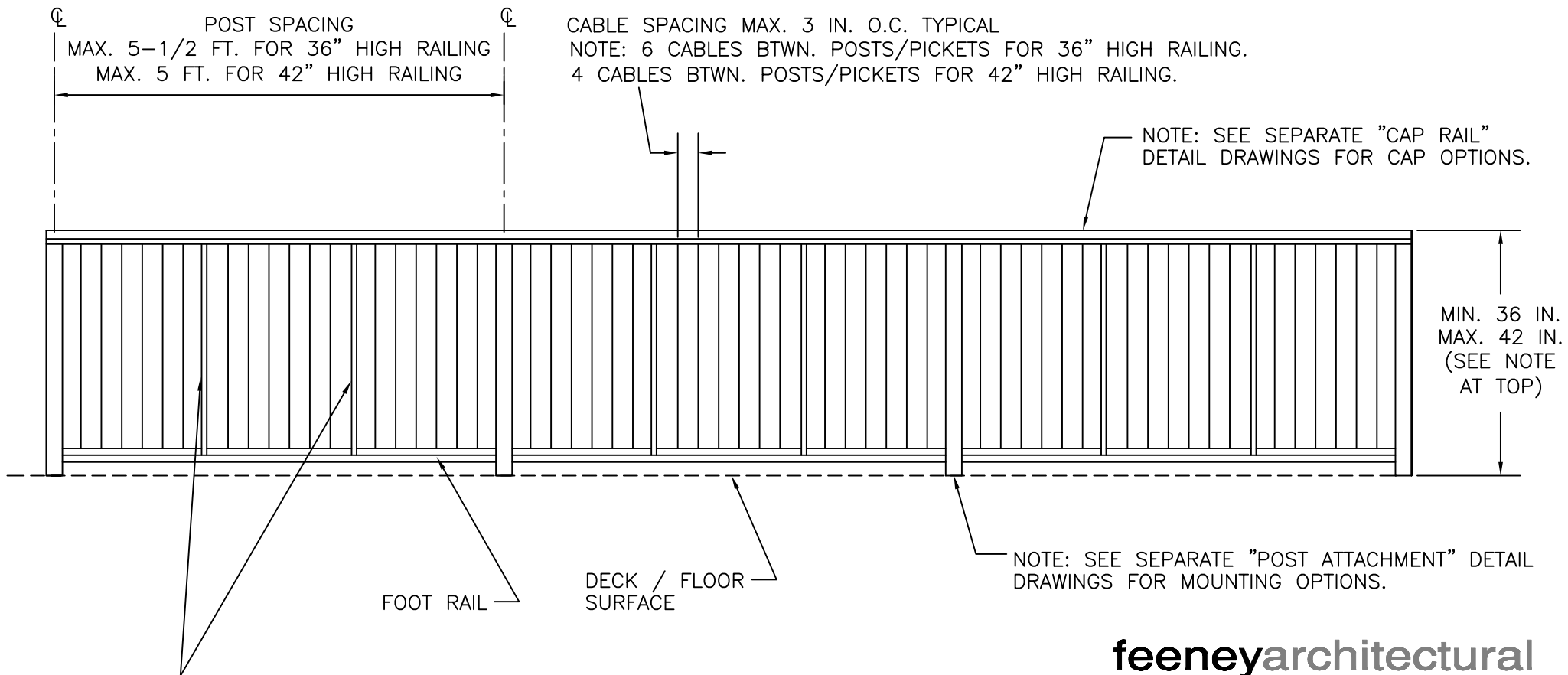




RAILING: VERTICAL CABLE INFILL  
36" HIGH ALUMINUM FRAME

DWG # RAIL V-CABLE REV 1  
DATE 11/07

NOTE: 42" HIGH RAILING DETAIL SIMILAR WITH ADDITION OF 1 INTERMEDIATE PICKET AND REDUCTION OF POST SPACING TO MAX. 5 FEET (4 CABLES BETWEEN POSTS/PICKETS)

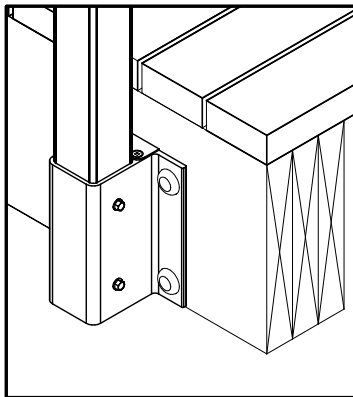


INTERMEDIATE PICKETS:  
NOTE: 2 PICKETS BTWN. POSTS FOR 36" HIGH RAILING.  
3 PICKETS BTWN. POSTS FOR 42" HIGH RAILING.

**feeneyarchitectural**  
PRODUCTS

DesignRail™—Railing Systems  
2603 Union Street  
Oakland, CA 94607-2423  
Ph: 800-888-2418 or 510-893-9473  
Fx: 510-893-9484, [www.designrail.com](http://www.designrail.com)



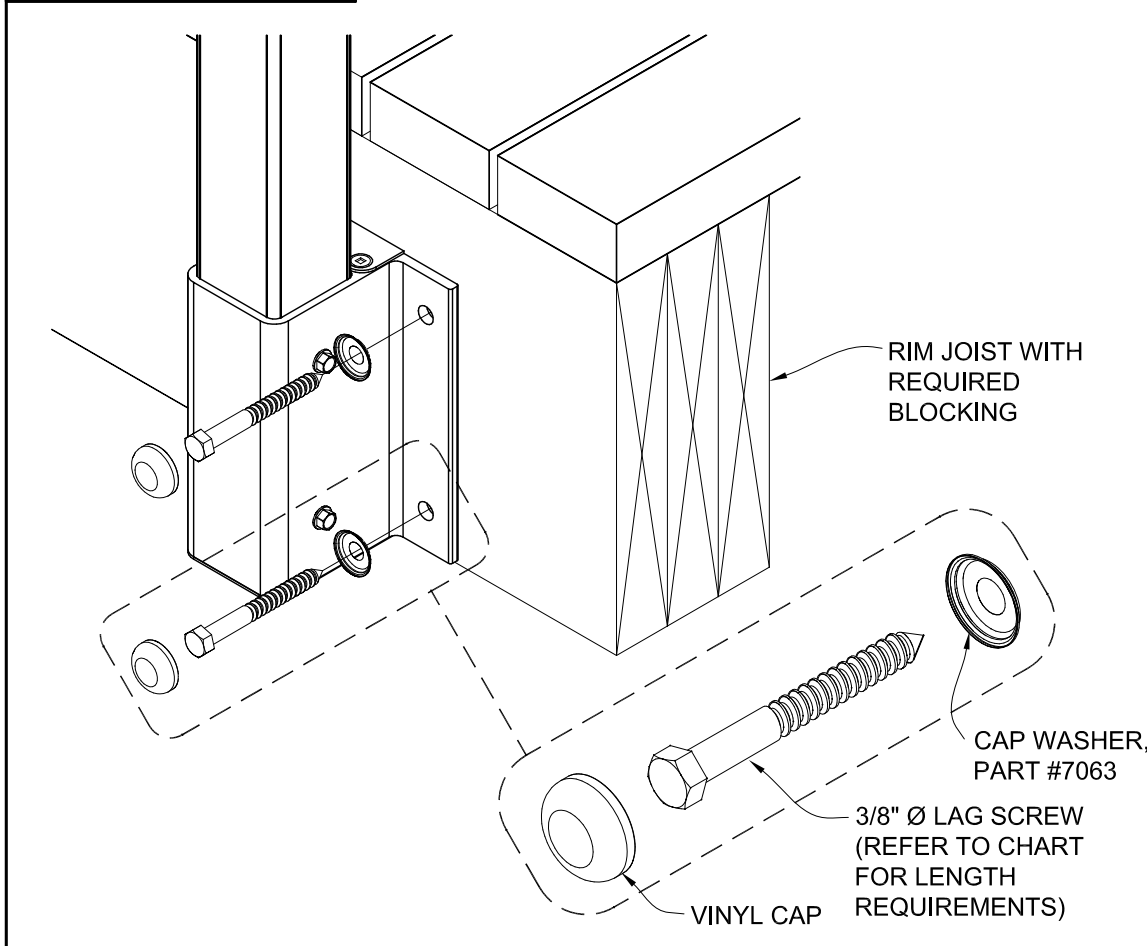


**NOTES:**  
 MINIMUM LAG PENETRATION DIMENSION, REFER TO REQUIREMENTS FOR LAG SCREW PENETRATION INTO SOLID LUMBER. LUMBER ASSUMED TO HAVE A MINIMUM 0.43 SPECIFIC GRAVITY (ie: HEM-FIR).

RIM JOIST AND BLOCKING MUST BE PROPERLY ATTACHED TO STRUCTURE TO RESIST TRANSFERRED LOADS FROM POSTS.

IF USING COMPOSITE MATERIAL AS FASCIA BOARD, FASCIA THICKNESS WILL NOT CONTRIBUTE TO PENETRATION REQUIREMENT. LAG SCREW LENGTH AND BLOCKING MUST BE ADJUSTED TO ACCOUNT FOR ADDITIONAL LENGTH, AS NECESSARY.

BOLT PATTERN MAY VARY DEPENDING ON JOIST HEIGHT AND PROJECT TYPE.



		INTERIOR	EXTERIOR
RESIDENTIAL (MAX 6' OC)	36"	<p>3" MIN. LAG PENETRATION          3-1/2" LAG SCREWS,          PART #7277</p>	<p>3-3/4" MIN. LAG PENETRATION          4-1/2" LAG SCREWS,          PART #6565</p>
	38"-42"	<p>3-1/4" MIN. LAG PENETRATION          3-1/2" LAG SCREWS,          PART #7277</p>	<p>4-1/4" MIN. LAG PENETRATION          4-1/2" LAG SCREWS,          PART #6565</p>
COMMERCIAL (MAX 5' OC)	42"	<p>4" MIN. LAG PENETRATION          4-1/2" LAG SCREWS,          PART #6565</p>	<p>5" MIN. LAG PENETRATION          6" LAG SCREWS,          PART #7278</p>

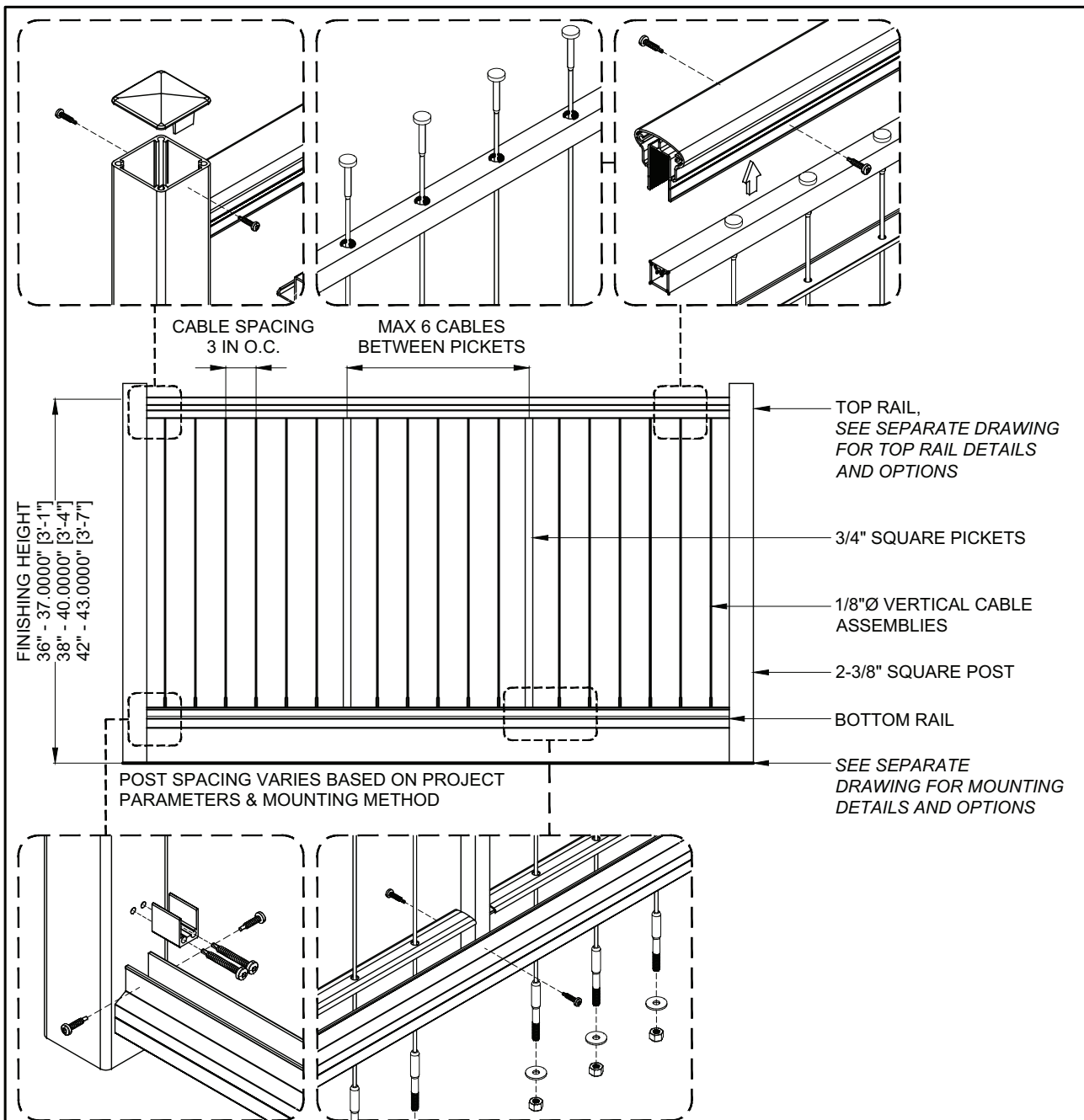
# DesignRail® Reference Drawing: FASCIA BRACKET MOUNT TO WOOD - LAG SCREWS

THIS DRAWING IS THE PROPERTY OF FEENEY INC. ANY REPRODUCTION OF THIS DOCUMENT WITHOUT THE EXPRESSED WRITTEN CONSENT OF FEENEY INC. IS STRICTLY PROHIBITED.

DATE:	06/10/15
PAGE:	1 OF 1
REV:	
BY:	BWA
CHK:	

**feeney®** 

2603 Union St., Oakland, CA 94607  
 P: 800-888-2418 F: 510-788-6041  
[www.feeneyinc.com](http://www.feeneyinc.com)



SERIES 100 OR 150  
TOP RAIL

SERIES 150  
TOP RAIL RCB  
PART # 7213

#10 x 1-3/4"  
SS SELF-TAPPING  
SCREW, PART # 7267

HORIZONTAL PICKET  
DRILLED @ 3" OC,  
PART #7583

SNAP CAP FOR  
VERTICAL CABLE  
PART # 7125

#8 x 3/4"  
SS SELF-TAPPING  
SCREW,  
PART #7270

VERTICAL  
CABLE  
ASSEMBLY

SNAP CAP FOR  
VERTICAL CABLE  
PART # 7125

BOTTOM RAIL FOR  
VERTICAL CABLE  
PART #7341 / 7124

#8 x 3/4"  
SS SELF-TAPPING  
SCREW,  
PART #7270

#10 x 1-3/4"  
SS SELF-TAPPING  
SCREW, PART #7267

RCB FOR BOTTOM  
RAIL PART #7211

SS WASHER,  
PART #3180

NYLOK NUT,  
PART #3121

	PICKETS	CABLES
36"	7584	6036-VC
38"	7585	6038-VC
42"	7586	6042-VC

DesignRail® Detail Drawing:

## VERTICAL CABLERAIL INFILL FOR SERIES 150

THIS DRAWING IS THE PROPERTY OF FEENEY INC. ANY REPRODUCTION OF THIS DOCUMENT WITHOUT THE EXPRESSED WRITTEN CONSENT OF FEENEY INC. IS STRICTLY PROHIBITED.

DATE:	12/08/17
PAGE:	1 OF 1
REV:	
BY:	JTC
CHK:	BWA

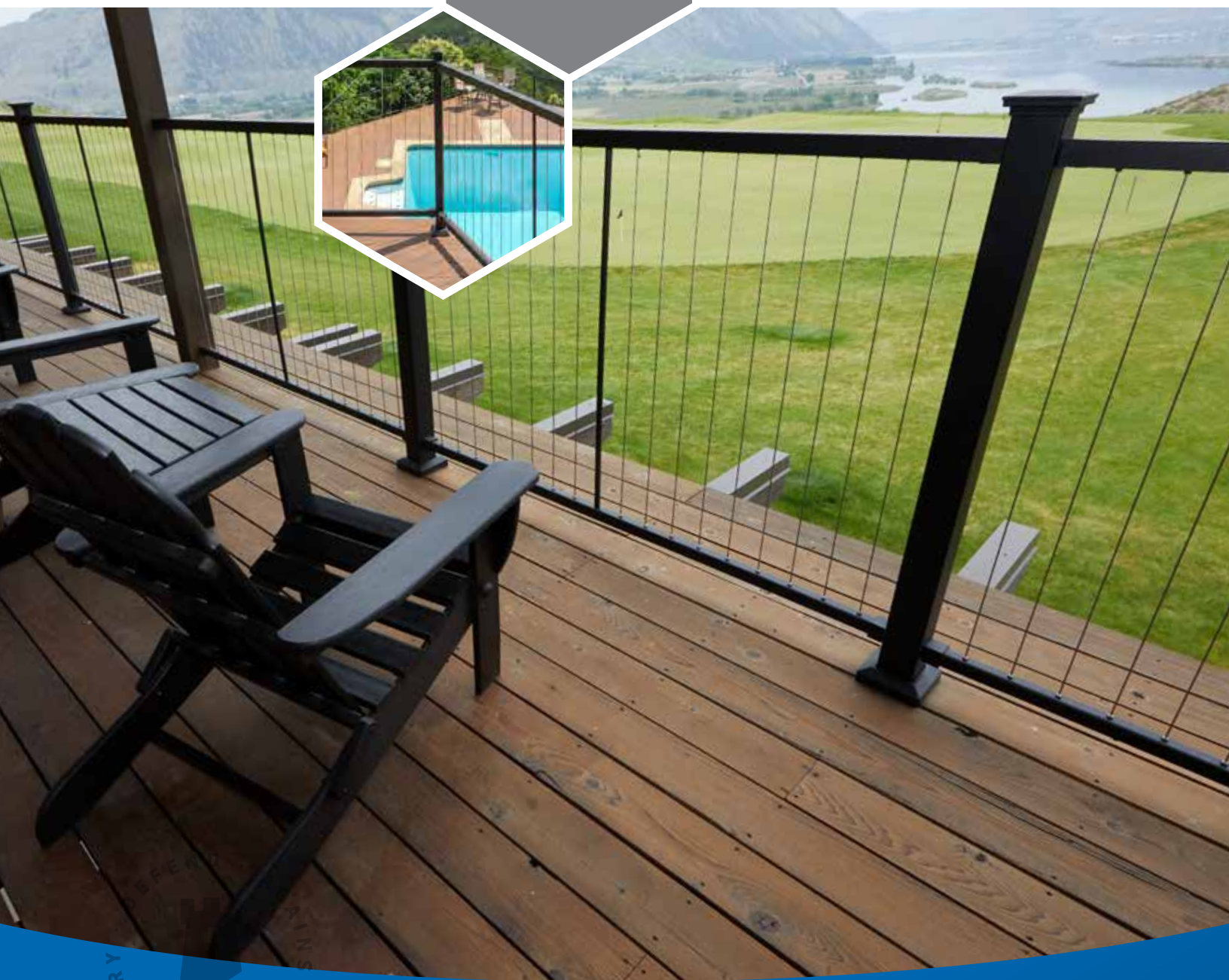
**feeney**

2603 Union St., Oakland, CA 94607  
P: 800-888-2418 F: 510-893-9484  
[www.feeneyinc.com](http://www.feeneyinc.com)



# FORTRESSCABLE V-SERIES STEEL CABLE RAILING

**RETHINK THE RAIL.**



THE ORDINARY  
AGAINST

**JOIN THE REVOLUTION.**  
FortressBP.com | 866.323.4766

**FORTRESS**  
BUILDING PRODUCTS





## TO REACH NEW HEIGHTS IN DESIGN, GO VERTICAL

Fortress® set out on a mission to create the first vertical cable railing system in the industry—and we succeeded. Now, FortressCable V-Series steel cable railing is not only affordable, but anyone can install it. The sleek top and bottom rail make this option a great choice for style and function.

**RESIST RUST  
& CORROSION**

**UNOBSTRUCTED  
VIEWS**

**PANELIZED  
SYSTEM**



### KEY FEATURES

- 1st vertical cable railing panel in the decking/railing industry
- FortressShield-Coated utilizing advanced automotive coating process to resist rust and corrosion
- Pre-assembled for ease of installation
- 316 marine grade stainless steel cable and components
- Works with wood, composite, vinyl and Fortress steel posts
- Quick and easy installation
- Meets ICC-ES™ AC273, NBCC, OBC, ABC and BCBC standards

### PREMIUM FINISH

Fortress Cable Railing Black Sand finish is engineered to withstand the elements.



Black Sand

### WARRANTY

#### Manufacturer Warranty

Historically, fortresses were built to protect. The same is true of Fortress Building Products. You can expect coverage the second you decide to embark on your journey with us. We cover our products and the people who buy them. At Fortress, we don't just stand behind our work ... we stand by your side.



CODE  
COMPLIANCE

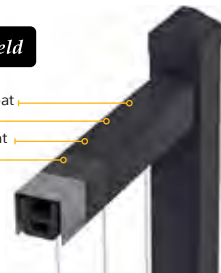


Intertek  
CCRR-0248

Protected with

**FortressShield**

Premium Powder Coat  
E-Coat  
Quality Pre-treatment  
Zinc Galvanized



— Simple Assembly —

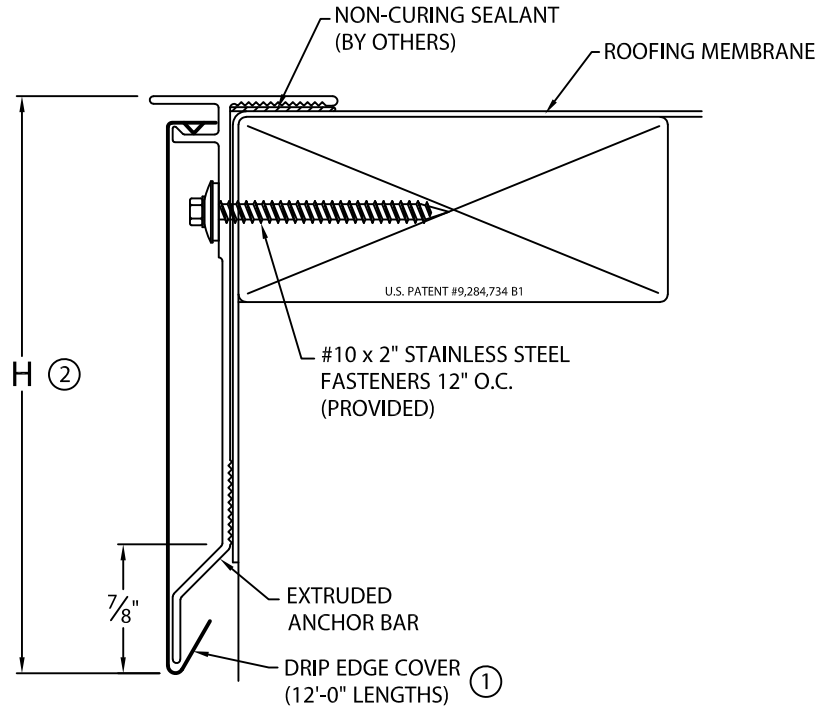
## EASY AS 1, 2, 3, FORTRESS





# ANCHOR-TITE DRIP EDGE

ANSI/SPRI ES-1 TESTED



## NOTES:

- ① FASCIA COVER PROVIDED WITH 1" LAP JOINTS.
- ② TYPICALLY COVERAGE SHOULD EXTEND A MIN. OF 1½" BELOW WOOD BLOCKING IF APPLICABLE

## ANCHOR-TITE DRIP EDGE DIMENSIONS

PRODUCT ID. NO.	H DIM
<input type="checkbox"/> AFDE-30	3"
<input type="checkbox"/> AFDE-45	4½"
<input type="checkbox"/> AFDE-60	6"
<input type="checkbox"/> AFDE-75	7½"

Fabrication will proceed only after receipt of signed print approval.

## Print Approval:

Architect and/or contractor shall verify all dimensions, sizes and quantities. All products to be installed in strict accordance with Metal-Era's printed instructions.

Approved by: \_\_\_\_\_

Date: \_\_\_\_\_

## MATERIAL:

\_\_\_\_ 24 GA. GALVANIZED STEEL

\_\_\_\_ .040" ALUMINUM

\_\_\_\_ OTHER \_\_\_\_\_

COLOR: \_\_\_\_\_

FINISH: \_\_\_\_\_

## QUANTITIES:

\_\_\_\_ LINEAL FEET 12'-0" LENGTHS

\_\_\_\_ OUTSIDE MITER(S) @ 90°

\_\_\_\_ INSIDE MITER(S) @ 90°

FOR NON-90 MITERS SEE PRINT APPROVAL #11010-1103

## PROJECT:

## ARCHITECT:

## ROOFING CONTRACTOR:

## REPRESENTATIVE/DISTRIBUTOR:

Corporate Offices, Manufacturing  
1600 Airport Road; Waukesha, WI 53188  
Phone: 800-558-2162  
Fax: 800-373-9156  
www.metalera.com



DATE: 07/10/19

DRN BY: JJC

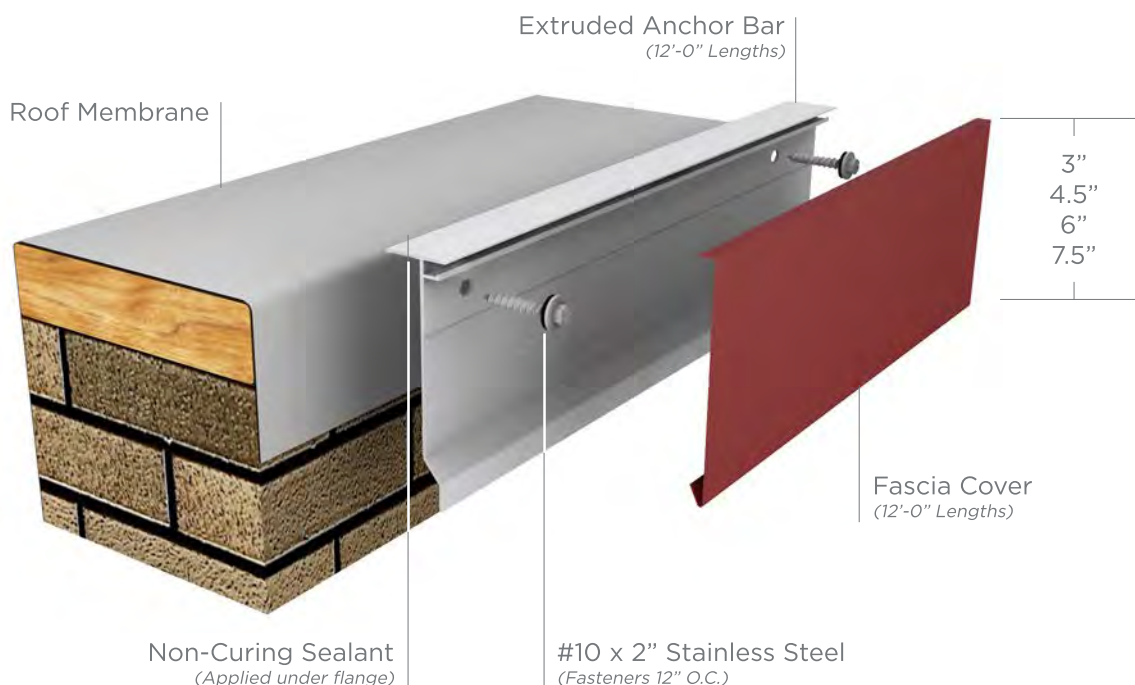
CKD BY: SAK

SHT.# \_\_\_\_ OF \_\_\_\_

DWG# 11010-20546

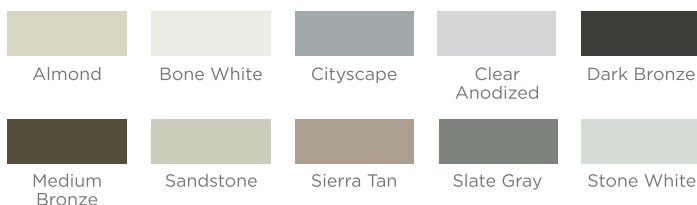
G

VERSIONS	STANDARD SIZES	COVER MATERIALS
<ul style="list-style-type: none"> <li>• Standard</li> <li>• Pitched Flange (for sloped roofs up to 4"/12" pitches)</li> </ul>	<ul style="list-style-type: none"> <li>• 3"</li> <li>• 4.5"</li> <li>• 6"</li> <li>• 7.5"</li> </ul>	<ul style="list-style-type: none"> <li>• 24 ga. Steel</li> <li>• .040" Aluminum</li> </ul>



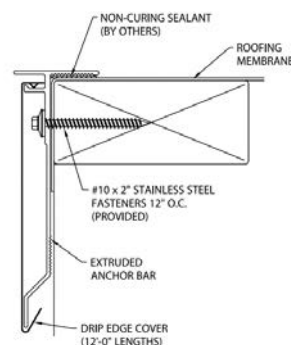
## 10 EXPRESS COLORS FOR QUICK SHIPPING

Express, standard, and premium colors and finishes are available to meet your job requirements and includes a 30-year Kynar 500® finish warranty on coil-coated standard colors. Custom colors are also available. For the most accurate color representation, contact us to request a paint chip.



All colors are also available in Mill Finish.

## EASY, EFFICIENT INSTALLATION



**Typical Installation**  
Standard Version

- Full snap-on design with extruded aluminum bar for easy installation
- No stripping-in or heat-welding typical with other systems for overall labor savings
- Prefabricated miters and accessories to prevent need for field fabrication
- Provided in 12'-0" lengths with pre-punched holes for quicker installation

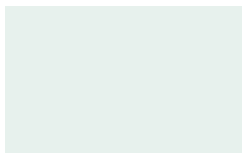


# COLOR CHART

## Express Colors \*



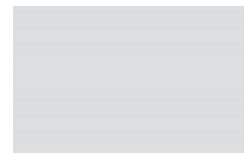
Almond ●



Bone White ●



Cityscape ●



Clear Anodized



Dark Bronze ●



Medium Bronze ●



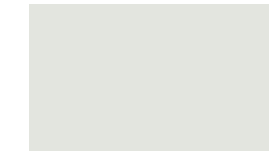
Sandstone ●



Sierra Tan ●



Slate Gray ●



Stone White ●

## Standard Colors



Cardinal (Regal)  
Red ●



Charcoal  
(Charcoal Gray) ●



Colonial Red ●



Evergreen ●



Forest (Sherwood)  
Green



Granite ●



Hartford Green



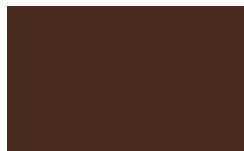
Hemlock Green ●



Hunter Green ●



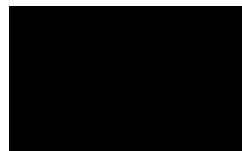
Interstate (Regal)  
Blue



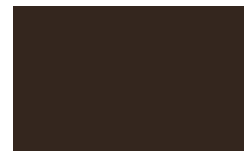
Mansard Brown ●



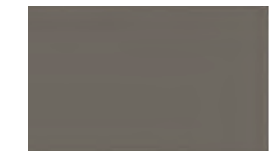
Matte Black ▲



Glossy Black ▲



Midnight (Extra Dark)  
Bronze



Musket Gray ●



Patina Green ●▲



Sky (Military) Blue ●



Slate Blue ●



Terra Cotta ●

## Premium Colors



Aged Copper ●



Award Blue



Champagne  
(Metallic) ●



(Classic) Copper  
Penny ●



Sand Stone ■★



Silver (Metallic) ●



Silversmith



Weathered Zinc ●



Zinc ●

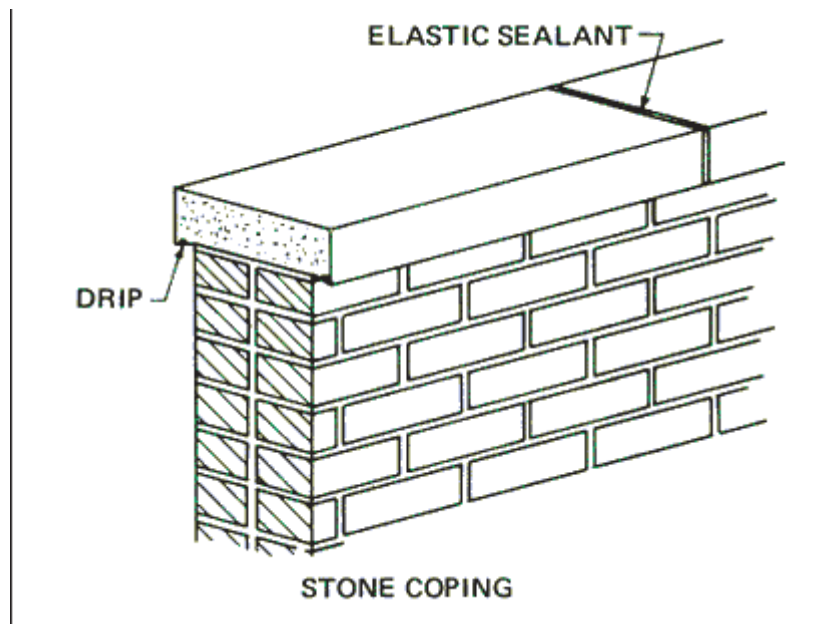
- \* = Also in Mill Finish
- = Post-Painted
- = Energy Star Rated
- ▲ = Must Specify Supplier
- ★ = Available in 3 Other Stone Colors

Our colors are deep, rich and true. Made of Valspar's Fluorpon® High Performance Hylar 5000®/Kynar 500® finish, they offer the ultimate in resistance against fading and weathering. Custom colors also available.

METL-0008







Item #	UPC Code:
8106-A138-L	747396087221
Product Family Name:	Finish:
Kirkham <sup>™</sup>	Aspen Bronze <sup>™</sup>
Category:	Category Type:
POST MOUNT LANTERN	Post Light
Certification	
3057374	
Patents:	
Notes:	



Image File Name: 8106-A138-L.jpg



## MEASUREMENTS

Width:	Length:	Height:	Extension:
8.5		11	11.75
Height Adjustable:	Min Overall Height:	Max Overall Height:	Slope:
No			No
Wire Length:	Chain Length:	Safety Cable Included:	Net Weight:
7		No	1.59
Canopy Width:	Canopy Height:	Canopy Length:	Center to Bottom:
Backplate Width:	Backplate Height:	Center to Top:	

No. of Bulbs:	Light Type:			
1	L-AC10-MODULE			
Max Bulb Wattage:	Socket:			
10	LED MODULE			
Dimmable:	Ballast:	Rated Life Hours:	Photocell Included:	Bulb/LED Included:
Yes		30000	No	
Bulb/LED Included:	Color Temp.:	CRI:	Initial Lumens:	Delivered Lumens:
	2700	78	450.0	313.26



## SHIPPING

Description:	Material:
	GLASS
Part No.:	Quantity:
G8101-CVR	1
Width:	Height:
	Length:

Carton Width:	Carton Height:	Carton Length:
10.5	13.0	14.0
Carton Weight:	Carton Cubic Feet:	Small Package Shippable:
3.124	1.106	Yes
Master Pack Width:	Master Pack Height:	Master Pack Length:
Master Pack Weight:	Master Cubic Feet:	Multi-Pack:
		Master Pack:
		1

LED



Dark Sky



Wet Location



ETL Intertek



**WARNING:**Handling this product can expose you to chemicals including lead, which is known to the State of California to cause cancer and birth defects or other reproductive harm. Wash hands with soap and water after installing, handling, cleaning or otherwise touching this product. For more information go to: [www.P65Warnings.ca.gov](http://www.P65Warnings.ca.gov).

For additional information, please contact Customer Care: 1-800-221-7977 | Product depicted on this spec sheet is protected by United States Federal and/or State laws including US Patent, Trademark and/or Copyright and unfair competition laws. Unauthorized reproduction or use carries severe legal penalties.

Item #	UPC Code:
7900-166	747396049533
Product Family Name:	Finish:
	Corona Bronze™
Category:	Category Type:
POST	
Certification	
Patents:	
Notes:	



Image File Name: 7900-166.jpg



## MEASUREMENTS

Width:	Length:	Height:	Extension:
3	3	96	
Height Adjustable:	Min Overall Height:	Max Overall Height:	Slope:
No			No
Wire Length:	Chain Length:	Safety Cable Included:	Net Weight:
		No	5.78
Canopy Width:	Canopy Height:	Canopy Length:	Center to Bottom:
Backplate Width:	Backplate Height:	Center to Top:	

No. of Bulbs:	Light Type:			
0				
Max Bulb Wattage:	Socket:			
Dimmable:	Ballast:	Rated Life Hours:	Photocell Included:	Bulb/LED Included:
No			No	N
Bulb/LED Included:	Color Temp.:	CRI:	Initial Lumens:	Delivered Lumens:



## SHIPPING

Description:	Material:
Part No.:	Quantity:
Width:	Height:
	Length:

Carton Width:	Carton Height:	Carton Length:	
3.75	3.75	97.5	
Carton Weight:	Carton Cubic Feet:	Small Package Shippable:	
7.66	0.793	No	
Master Pack Width:	Master Pack Height:	Master Pack Length:	
Master Pack Weight:	Master Cubic Feet:	Multi-Pack:	Master Pack:
		1	1



**WARNING:**Handling this product can expose you to chemicals including lead, which is known to the State of California to cause cancer and birth defects or other reproductive harm. Wash hands with soap and water after installing, handling, cleaning or otherwise touching this product. For more information go to: [www.P65Warnings.ca.gov](http://www.P65Warnings.ca.gov).

For additional information, please contact Customer Care: 1-800-221-7977 | Product depicted on this spec sheet is protected by United States Federal and/or State laws including US Patent, Trademark and/or Copyright and unfair competition laws. Unauthorized reproduction or use carries severe legal penalties.



## LED LIFESTYLE SMALL DECORATIVE AREA LIGHTS (XDLS)



US patent 7,828,456 8,002,428, 8,177,386 8,434,893 8,567,983 and US & int'l. patents pending

**SMARTTEC™** - LSI drivers feature integral sensor which reduces drive current when ambient temperatures exceed rated temperature

**ENERGY SAVING CONTROL OPTION** - DIM - 0-10 volt dimming enabled with controls by others. BLS - Bi-level switching responds to external line voltage signal from separate 120-277V controller or sensor (by others), with low light level decreased to 30% maximum drive current.

**LEDS** - Select high-brightness LEDs in Cool White (5000K), Neutral White (4000K) or Warm White (3500K) color temperature. 70 CRI CW. 80 CRI NW and WW.

**DISTRIBUTION PATTERN** - Types 3, FT and 5. Exceptional uniformity creates bright environment at lower light levels. Improved backlight cutoff minimizes light trespass.

**CROWN** - Cast aluminum. Wiring emerges from crown through compression seal fitting to prevent water entry. One-piece silicone gasket seals crown to shade for water- and dust-tight construction.

**SHADES** - Spun aluminum. Two shade styles available - A - Angle and B - Bell.

**OPTICAL UNIT** - Optical unit and aluminum door frame recessed into shade and sealed with one-piece silicone gasket. Clear tempered flat glass lens sealed with silicone gasket to door frame (includes pressure-stabilizing breather). Optical unit is tethered and provides access to driver. Door frame retaining fasteners are captive.

**BRACKETS** - Brackets are extruded and cast aluminum assemblies or fabrications. All decorative elements are die cast or extruded aluminum.

**MOUNTING** - Classic Hook (CH) and Side Arm (SA - 4" O.D. minimum pole top required) available. See Steel Round Pole and Aluminum Round Pole data sheets for pole selection information. Side Arm pole mount requires 3" reduced drilling pattern. Classic hook mount requires a 4" O.D. pole or tenon.

**ELECTRICAL** - Two-stage surge protection (including separate surge protection built into electronic driver) meets IEEE C62.41.2-2002, Location Category C. Available with universal voltage power supply 120-277VAC (UE - 50/60Hz input), and 347-480 VAC. Optional button-type photocells (PCI) are available in 120, 208, 240, 277 or 347 volt (supply voltage must be specified).

**DRIVERS** - Available in SS (Super Saver) and HO (High Output) drive currents (Drive currents are factory programmed.). Components are fully encased in potting material for moisture resistance. Driver complies with FCC standards. Driver and key electronic components can easily be accessed.

**OPERATING TEMPERATURE** - -40°C to +50°C (-40°F to +122°F).

**FINISH** - Each fixture is finished with LSI's DuraGrip polyester powder coat process. The DuraGrip finish withstands extreme weather changes without cracking or peeling.

**WARRANTY** - LSI LED fixtures carry a limited 5-year warranty.

**PHOTOMETRICS** - Please visit our web site at [www.lsi-industries.com](http://www.lsi-industries.com) for detailed photometric data.

**SHIPPING WEIGHT (IN CARTON)** - 24 lbs. (10.8 kg)

**LISTINGS** - UL listed to U.S. and Canadian safety standards. Suitable for wet locations

LIGHT OUTPUT - XDLS					
		Lumens (Nominal)			Watts (Nominal)
		Type 3	Type FT	Type 5	
Cool White	SS	7100	6540	6220	71
	HO	9600	8990	8500	106
Neutral White	SS	6510	5840	5680	71
	HO	8810	7890	7780	106
Warm White	SS	4790	5170	5010	71
	HO	6460	6880	6740	106

LED Chips are frequently updated therefore values may increase.

This product, or selected versions of this product, meet the standards listed below. Please consult factory for your specific requirements.



Project Name \_\_\_\_\_ Fixture Type \_\_\_\_\_

Catalog # \_\_\_\_\_

9/09/19  
© 2019  
LSI INDUSTRIES INC.

# LED LIFESTYLE SMALL DECORATIVE AREA LIGHTS (XDLS)

## PRODUCT ORDERING INFORMATION

TYPICAL ORDER EXAMPLE: **XDLSB 3 LED SS CW UE BLK CH S PCI120**

Prefix	Distribution	Light Source	Drive Current	Color Temp	Input Voltage	Finish	Mounting Style <sup>1,2</sup>	Mounting Configuration <sup>1,2</sup>	Options
XDLSA <sup>1</sup> Angle Shade	3 - Type III 5 - Type V FT - Forward Throw	LED	SS - Super Saver	CW - Cool White (5000K) NW - Neutral White (4000K) WW - Warm White (3500K)	UE - Universal Electronic (120-277V)  347-480 Universal Voltage (347-480V)	BLK - Black BRZ - Bronze WHT - White GPT - Graphite MSV - Metallic Silver PLP - Platinum Plus SVG - Satin Verde Green	CH - Classic Hook SA4 - Side Arm Mount for 4" O.D. Round Poles <sup>3</sup> SA5 - Side Arm Mount for 5" O.D. Round Poles <sup>3</sup>	S - Single D180 - Double D90 - Double <sup>4</sup> T90 - Triple <sup>4</sup> TN120 - Triple <sup>4</sup> Q90 - Quad <sup>4</sup> W - Wall Mount (For use with CH or Side Arm Mounting Style)	DIM - 0-10 Volt Dimming (from external signal) <sup>5</sup> BLS - Bi-level Switching (from external 120-277V signal) <sup>5</sup> Button Type Photocells PCI120 - 120V PCI208-277V - 208-277V PCI347 - 347V

## ACCESSORY ORDERING INFORMATION

(Accessories are field installed)

Description	Order Number	Description	Order Number
FK120 Single Fusing (120V)	FK120 <sup>6</sup>	DFK480 Double Fusing (480V)	DFK480 <sup>6</sup>
FK277 Single Fusing (277V)	FK277 <sup>6</sup>	FK347 Single Fusing (347V)	FK347 <sup>6</sup>
DFK208, 240 Double Fusing (208V, 240V)	DFK208, 240 <sup>6</sup>		

## FOOTNOTES:

1- When ordering a multiple configuration (D180, etc.) order one fixture/bracket configuration per pole - i.e. order one XDLSB 3 LED SS CW UE BLK CH D180 PCI120 to receive two fixtures and one CH D180 bracket (see drawing on this page). See STEEL ROUND POLES and ALUMINUM ROUND POLES data sheets for pole ordering information.

2- See Lifestyle Bracket ordering chart for Mounting Style/Configurations availability.

3- 3" reduced drilling pattern required.

4- For use with SA4 and SA5 mounting styles only.

5- DIM and BLS cannot be ordered together.

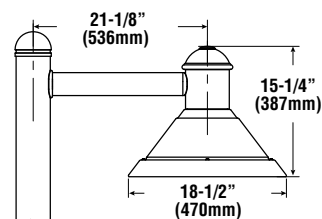
6- Fusing must be located in the hand hole of pole.

## LUMINAIRE EPA CHART - XDLS

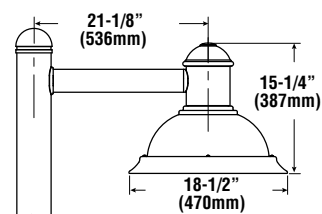
Single	
D180°	1.6
D90°	2.7
T90°	2.3
TN120°	3.3
Q90°	3.4
Q90°	4.1

Note: Includes Bracket

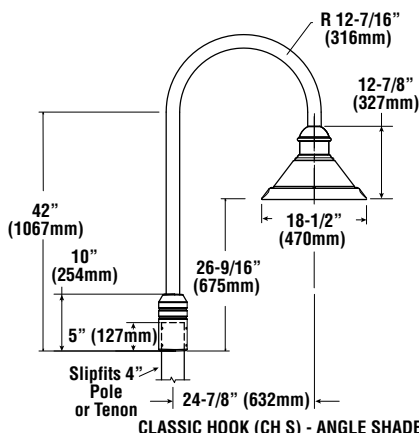
## DIMENSIONS



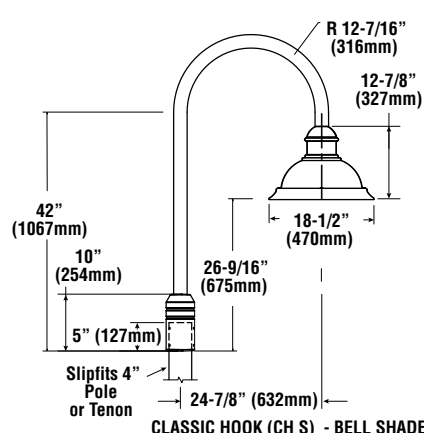
SIDE ARM (SA4 S) - ANGLE SHADE



SIDE ARM (SA4 S) - BELL SHADE



CLASSIC HOOK (CH S) - ANGLE SHADE

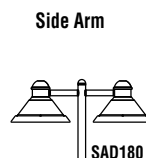


CLASSIC HOOK (CH S) - BELL SHADE

See Lifestyle Brackets and Mounts in outdoor section of latest Buyers Guide for details on other bracket sizes.



CHD180



SAD180



SAW



Project Name \_\_\_\_\_ Fixture Type \_\_\_\_\_

Catalog # \_\_\_\_\_

9/09/19

© 2019  
LSI INDUSTRIES INC.

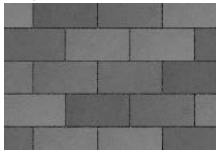
# ECO-PRIORA™ GREENBURGH, NEW YORK

## Architectural design with engineered performance.

Available in multiple shapes, this permeable paver is also produced using face-mix technology that will increase the durability of the product and provide better color retention. Custom colors and finishes are available to offer unlimited design possibilities. Combined with a surface infiltration rate of up to 140 inches per hour, Eco-Priora offers both aesthetics and performance.



OPAL



STEEL GREY BLEND

### Special Order Colors



BEECHWOOD  
STANDARD FINISH  
SPECIAL ORDER



GRANITE  
CLASSIC FINISH



GRANITE BLEND  
SMOOTH ENDURACOLOR  
FINISH



NATURAL  
STANDARD FINISH  
SPECIAL ORDER



RIVER  
STANDARD FINISH



SABLE BLEND  
SMOOTH ENDURACOLOR  
FINISH



SIERRA  
CLASSIC FINISH

Minimum quantities and special pricing may apply. Contact us for more details.



With so many different options for customization we ask that you contact your local Unilock Representative for more information about customizing this product.

Minimum quantities will apply.



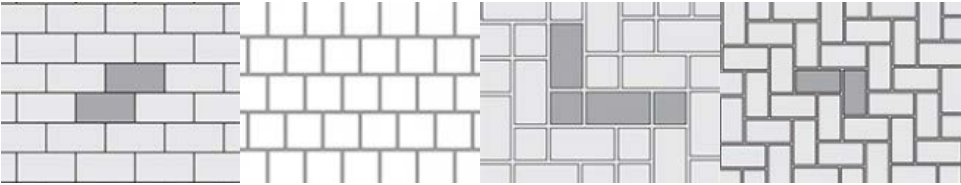
RECTANGLE	LARGE SQUARE	SQUARE
24 CM X 12 CM X 8 CM	24 CM X 24 CM X 8 CM	12 CM X 12 CM X 8 CM
9.5" X 4.75" X 3.125"	9.5" X 9.5" X 3.125"	4.75" X 4.75" X 3.125"
	SPECIAL ORDER	SPECIAL ORDER - PREMIUMS MAY APPLY

Eco-Priora can be manufactured in a herringbone pattern for mechanical installation. This is only available by special order, please contact your representative for details. Installation rates up to 12,000 sq.ft. per machine per day have been documented. This makes Eco-Priora a very competitive permeable pavement that can be

installed even in adverse weather conditions.

	Unit	SqFt Per			Per Bundle	Soldier LnFt Per		Sailor LnFt Per		Units Per		Lbs Per	
Stones & Bundling	Thickness	Bundle	Layer	Stone	Layers	SqFt	Bundle	SqFt	Bundle	SqFt	Bundle	Layers	Bundle
Rectangle	3-1/8" (8cm)	75.95	10.85	0.3	7	0.77	96.5	0.39	192.9	3.29	245	381	2669

Notes: **Special Order - lead time required, minimum quantities apply.** Sold in full bundles only and is shipped on a refundable skid. Eco-Priora™ can be manufactured in a variety of custom colors and textures. Availability may vary by region. Contact your Unilock representative for more information. **Important:** Textured surfaces require a buffer between the plate compactor and the paver surface to prevent scuffing. Specially graded aggregates must be used for the joints. Contact Unilock for information. All measurements are nominal.



Eco-Priora Pattern A  
5x10 (100%)

Eco-Priora Pattern B  
10x10 (100%)

Eco-Priora Pattern D  
5x5 (33%)  
5x10 (67%)

Eco-Priora Pattern E  
5x10 (100%)

Lunch n' Learn Seminars

Sample Request

Info Request



## Garden Gates

