

Hi, All

1. Attached is a sketch of the new brick sill with a 90 degree angle.

Description new 90 degree corner; Remove only the existing diagonal bricks on both sides with a diamond saw cut, leaving the horizontal brick enacted. Install new bricks with the same dimensions, creating a straight surface a 90 degree corner, this will enlarge the store entrance and create an ADA accessible entry to the retail Cafe Store. Once new brick sills are completed installed. to be painted sills as noted on storefront plan color..See attached submitted store front plan and attached sketch. Illustrating the new 90 corners

2. The projected sign installed on right side of facade, the dimension of the sign (ellipse shape) 30 inches wide x 24 inches height,

x 2 inches depth (thickness), metal stainless steel frame. Font sign; 18 inches , Smaller font 9 inches. Secured to masonry wall with 2,5 inch masonry expansion bolts min of 4 bolts on mounted face plate min thickness 3/8 thk.

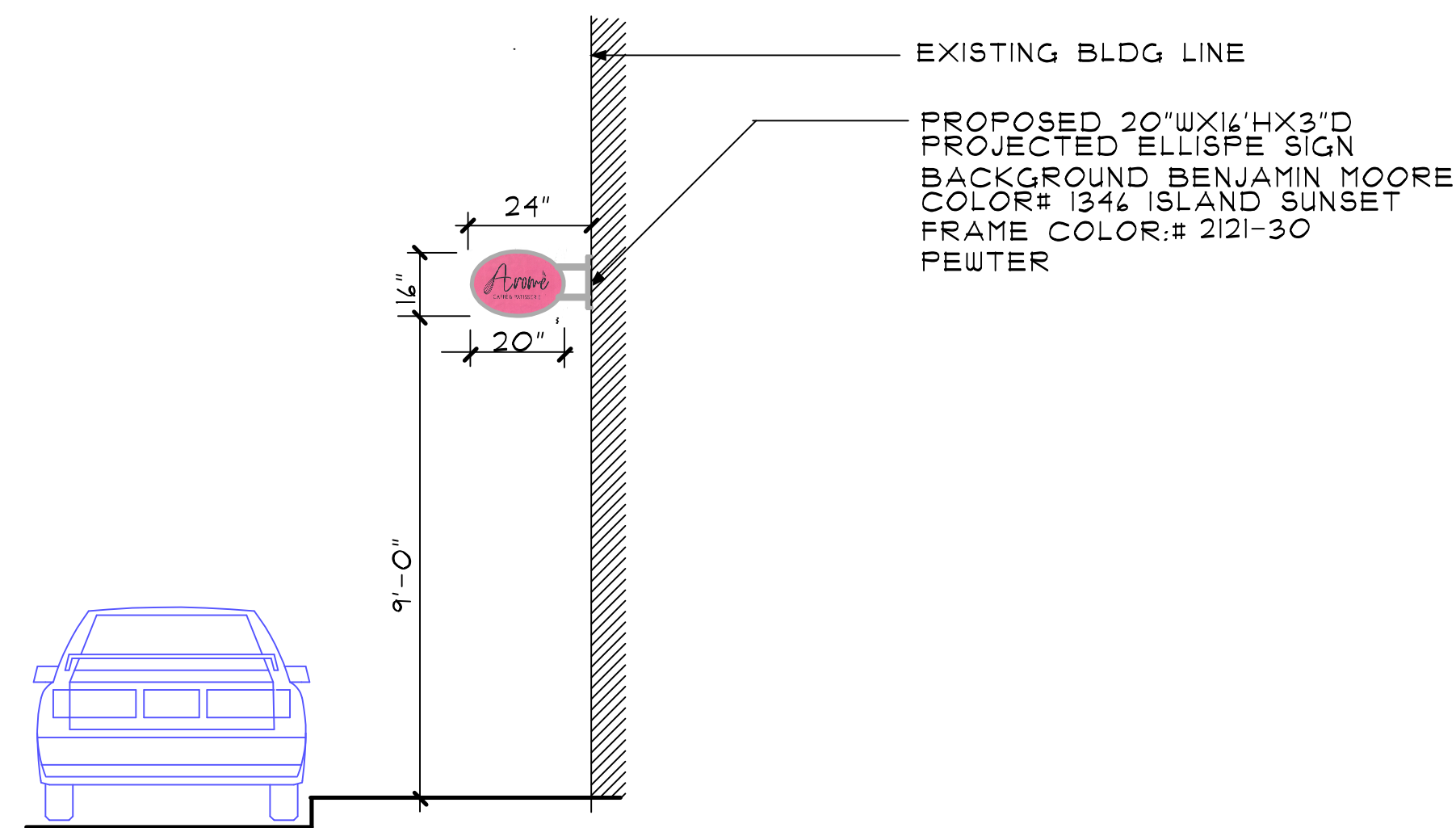
3. No AC unit above above door, Store will have a AC split system.

4. No proposed Exterior lighting.

Thank you very much

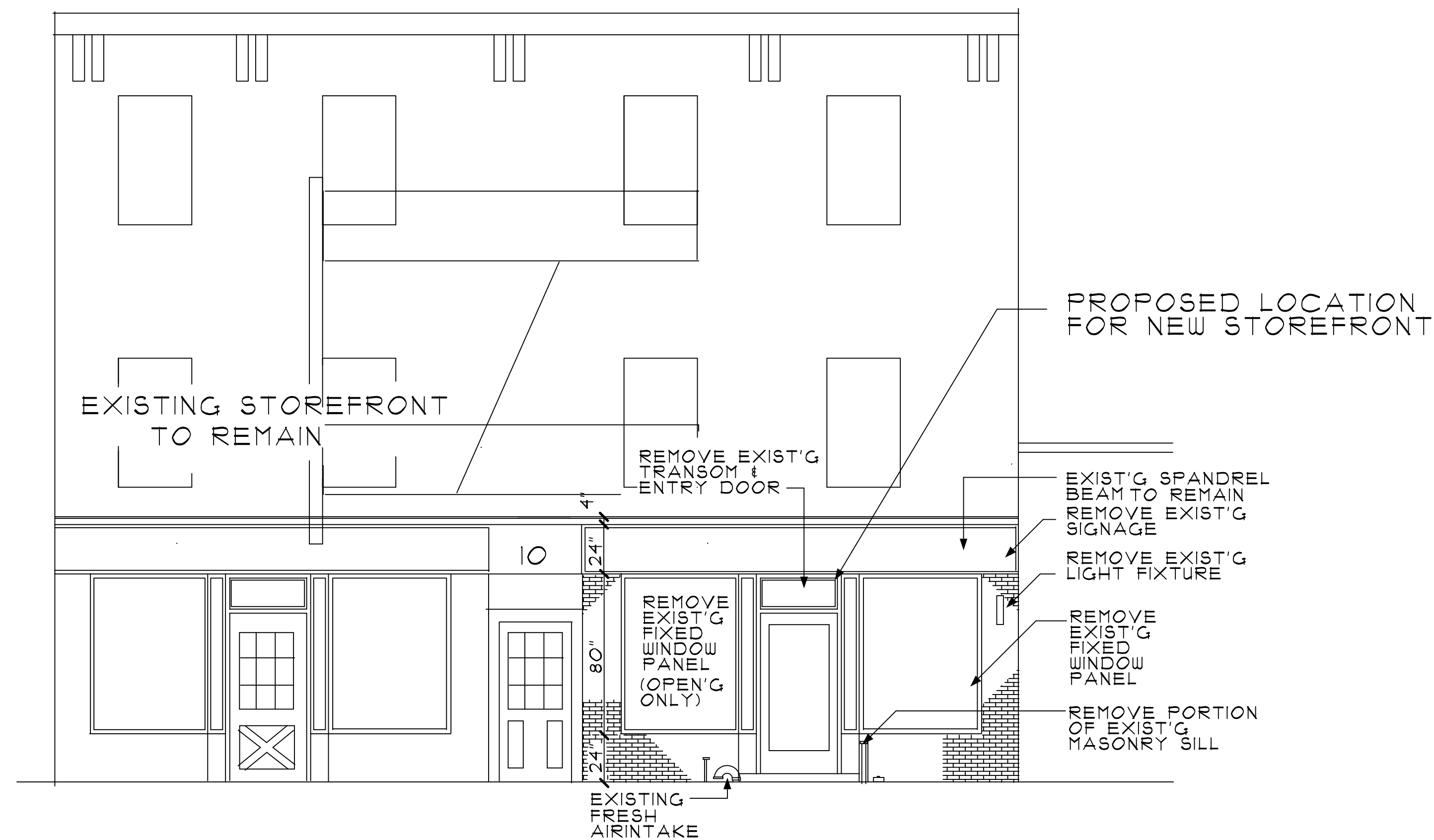
Vera Elezovic

Sent from my iPhone

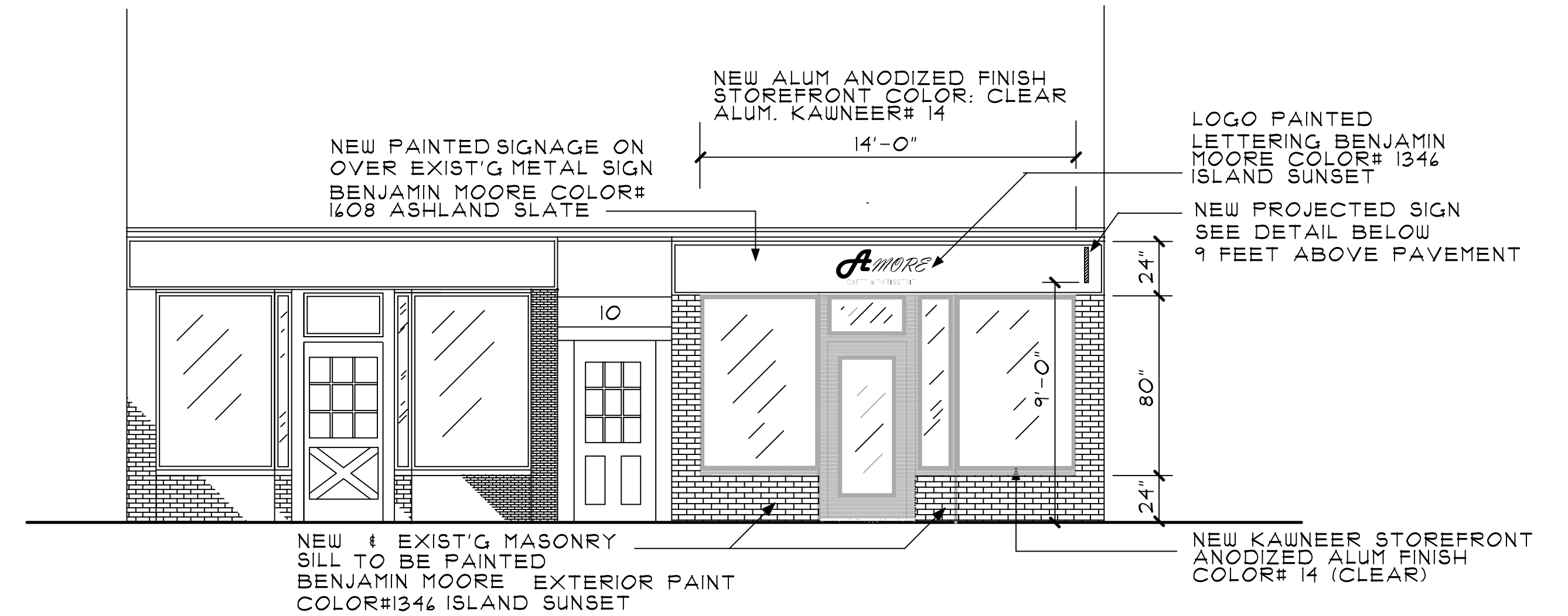


SECTION 'I-I'

NTS



EXISTING STOREFRONT ELEVATION

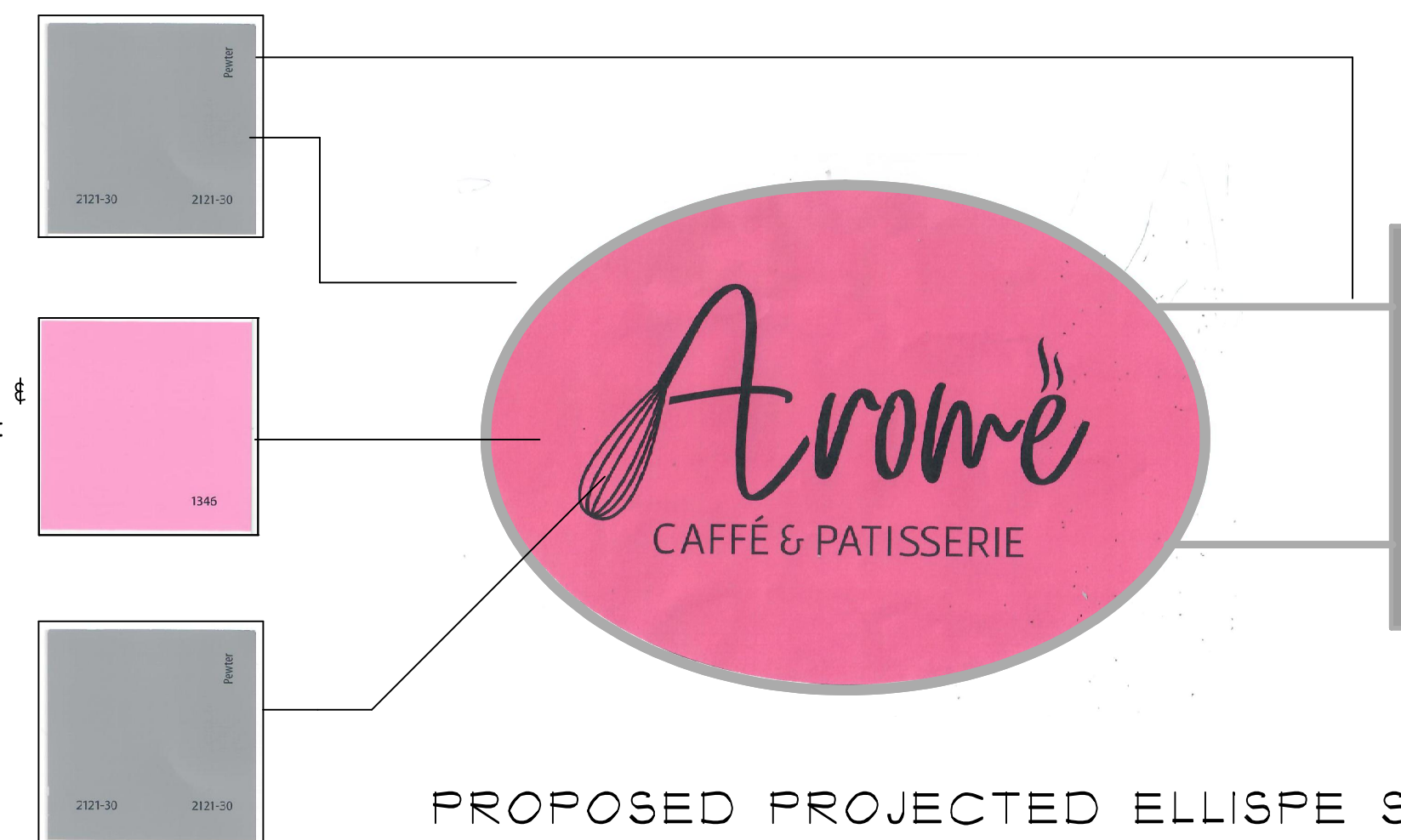


PROPOSED STORE-FRONT ELEVATION

BENJAMIN MOORE  
SIGN FRAME  
COLOR# 2121-30  
PEWTER

BENJAMIN MOORE  
PROJECTED SIGNAGE &  
BACKGROUND COLOR#  
1346 ISLAND SUNSET

BENJAMIN MOORE  
LETTERING  
COLOR# 2121-30  
PEWTER

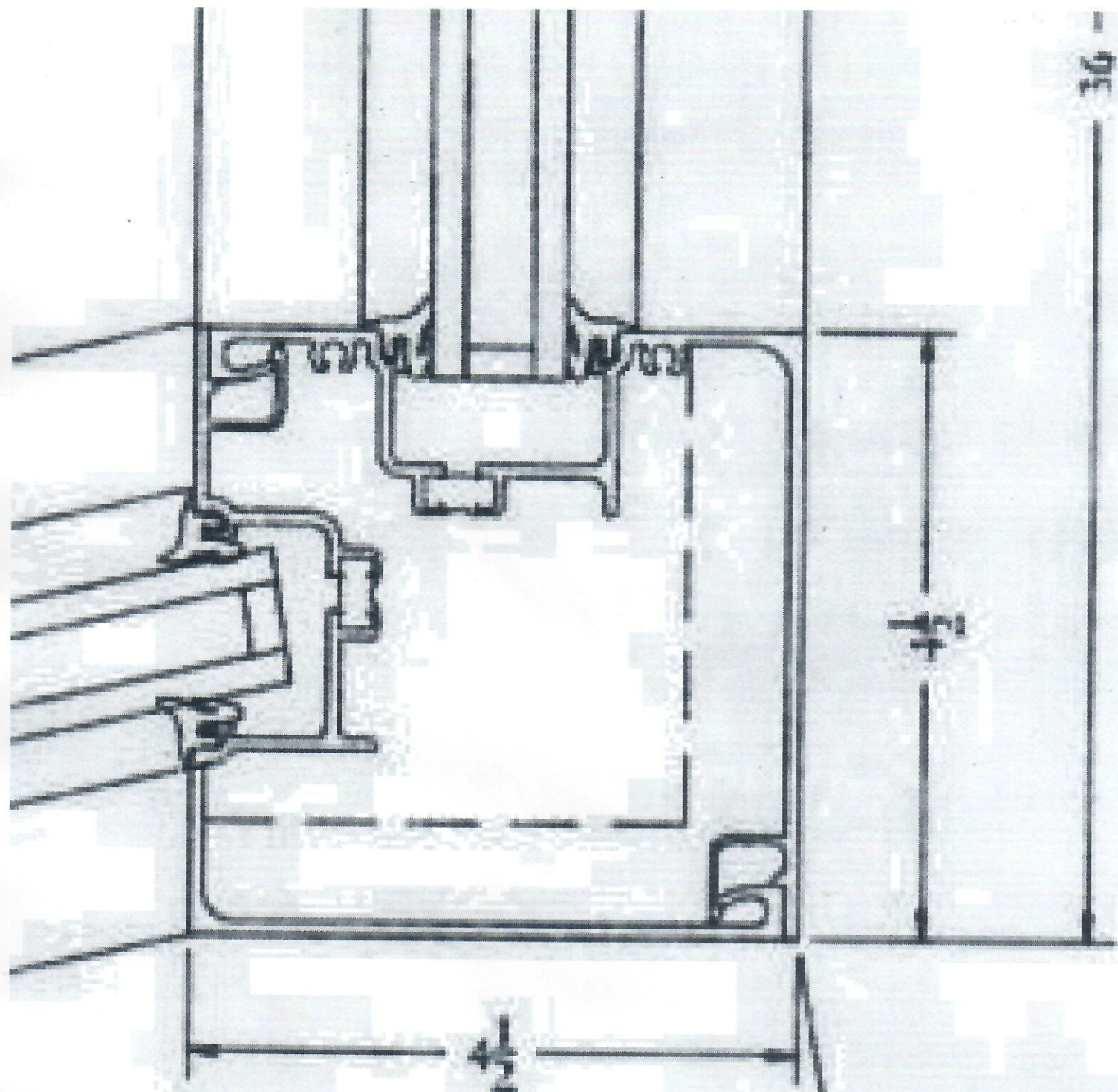


PROPOSED PROJECTED ELLISPE SIGN

NTS

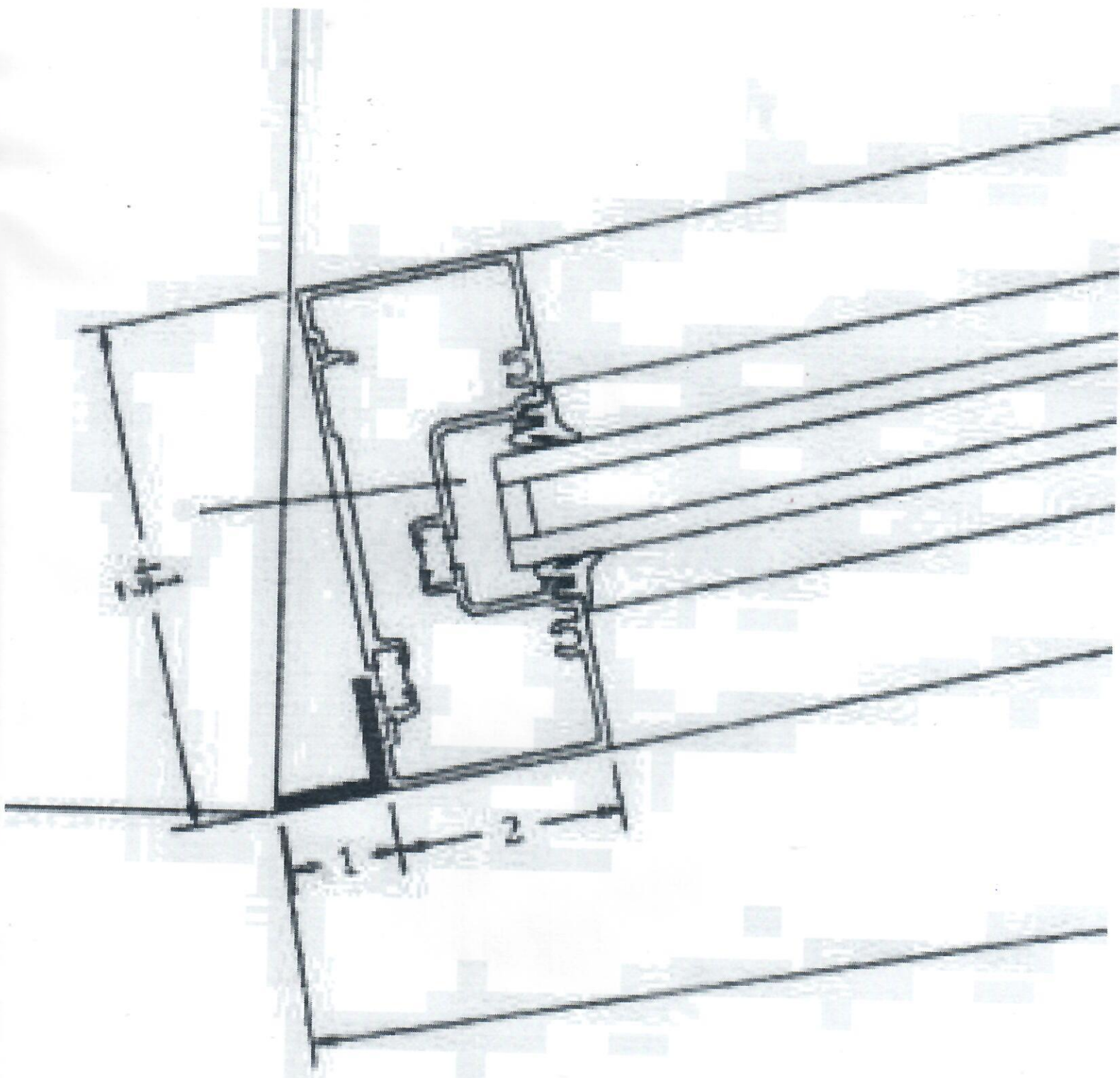
CLIENT: VERA ELEZOVIC 10 MAIN STREET HASTING ON HUDSON NY, 10706	
MOHAMED HEMIDA ENGINEER	
HEMIDA PE / ARRIAGA ASSOC. AIA 30-54 30 STREET (2H) ASTORIA, NY 1102 TEL: (718) 717-1468 ■ (914) 830-4012 HEMIDA@YAHOO.COM ■ JHARRIAGA@AOL.COM	
PROJECT: PROPOSED BAKERY/ CAFE SHOP @ 10 MAIN STREET HASTING ON HUDSON	
DRAWING TITLE: EXISTING CONDITION PLANS & SECTIONS AND ELEVATION	
DATE: 8/24/22 PROJECT: 003/22 DRAWING BY: JA DUG. NO.:	DATE: 8/24/22
	PROJECT: 003/22
	DRAWING BY: JA
	DUG. NO.:
SHEET NO. 1 OF 2	
DOB STAMP:	



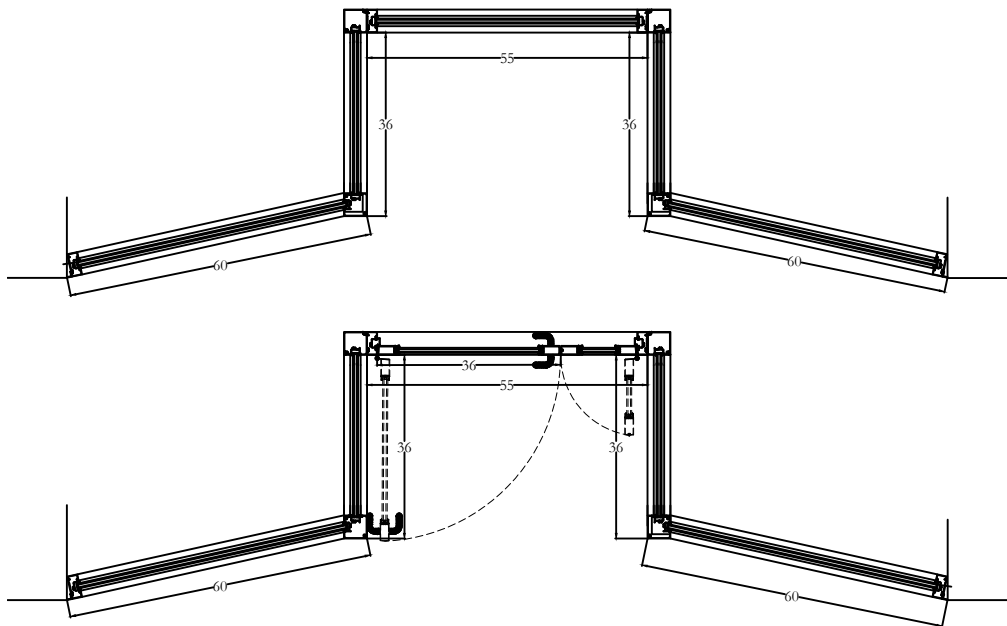


RIGHT SIDE  
CORNER '1"





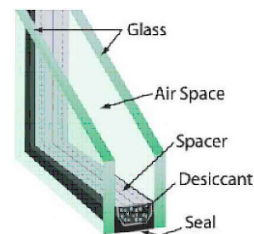
LEFT SIDE CORNER"1"



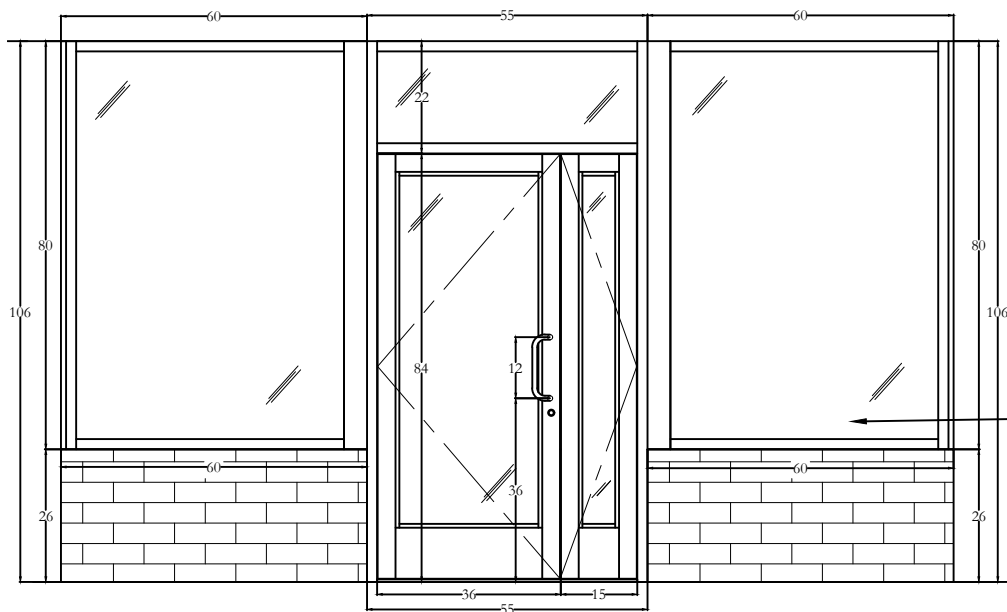
Aluminum Full length Gear Hinge  
Clear Anodized Aluminum Finish



Aluminum 12" Back to Back Offset Pulls  
Clear Anodized Aluminum Finish



1" Insulated Tempered Glass Units  
(2) Layers  $\frac{1}{4}$ " Clear Tempered Glass



1" Clear Tempered Insulated Thermopane Glass Units  
4-1/2" x 2" Clear Anodized Aluminum Thermally Broke Frames  
(1) 36" x 84" Medium Style Door  
(1) 15" x 84" Inactive Door  
Door w/ COC 90 Degree Closure Non Hold Open  
12" Back to Back Offset Aluminum  
Dbl Sided Mortise Key Lock  
4" Aluminum Saddle

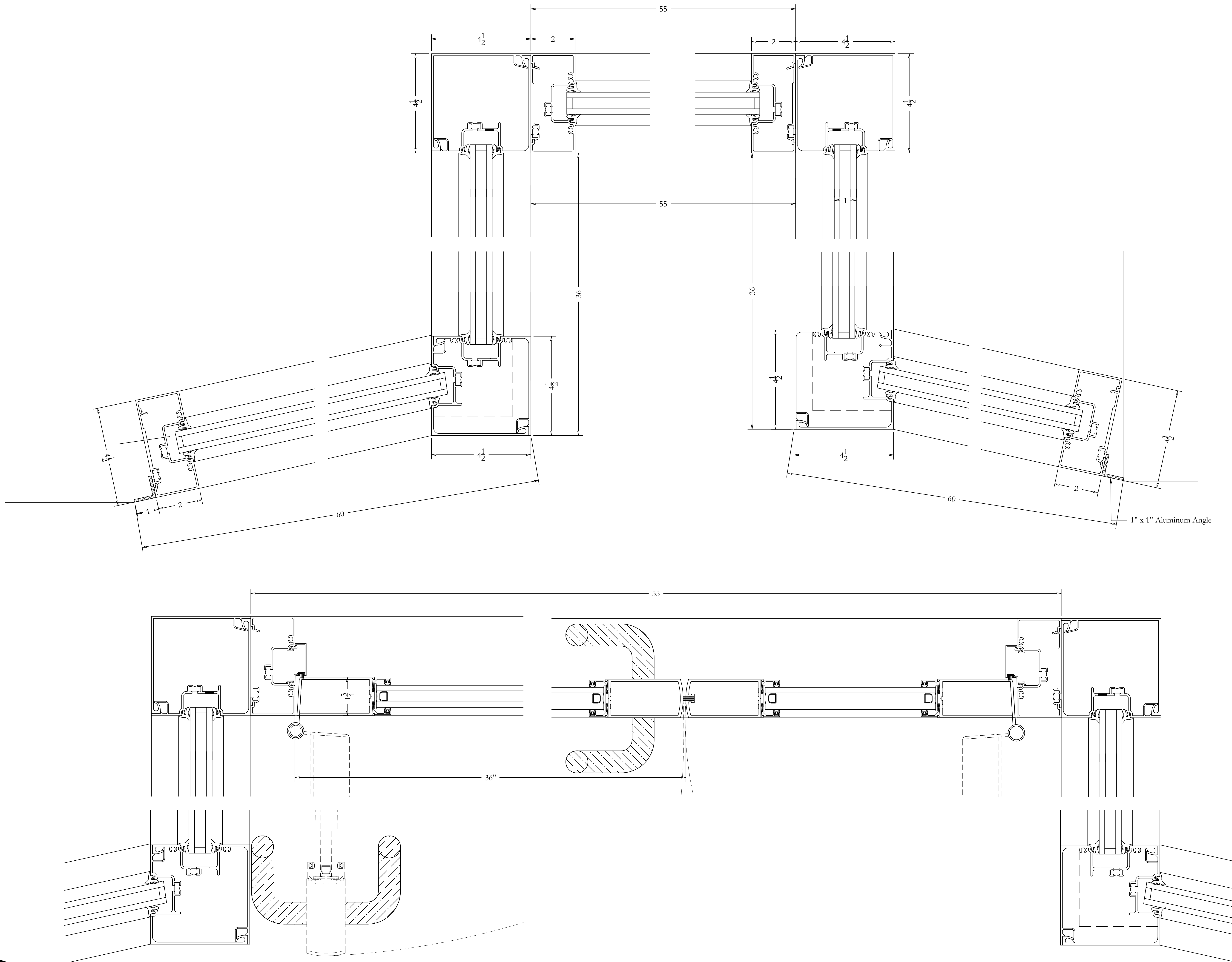
# General Notes

No.	Revision/Issue	Date

ZECCA GLASS &  
ARCHITECTURAL METAL  
1829 BOONE AVENUE  
BRONX, NY 10469  
TELE 718 589 3222  
FAX 718 589 7103

Project Name and Address  
STOREFRONT  
10 Main Street  
Hastings on the Hudson

Project	Sheet
STOREFRONT	GL-100
Date 02.23.23	
Scale AS NOTED	



General Notes

No.	Revision/Issue	Date

ZECCA GLASS &  
ARCHITECTURAL METAL  
1829 BOONE AVENUE  
BRONX, NY 10469  
TELE 718 589 3222  
FAX 718 589 7103

Project Name and Address  
**STOREFRONT**  
10 Main Street  
Hastings on the Hudson

Project	Sheet
STORE FRONT	GL-101
Date	
Scale	

02.23.23  
6" = 1'-0"